

TIME TO FILL SOME GAPS.



1



2



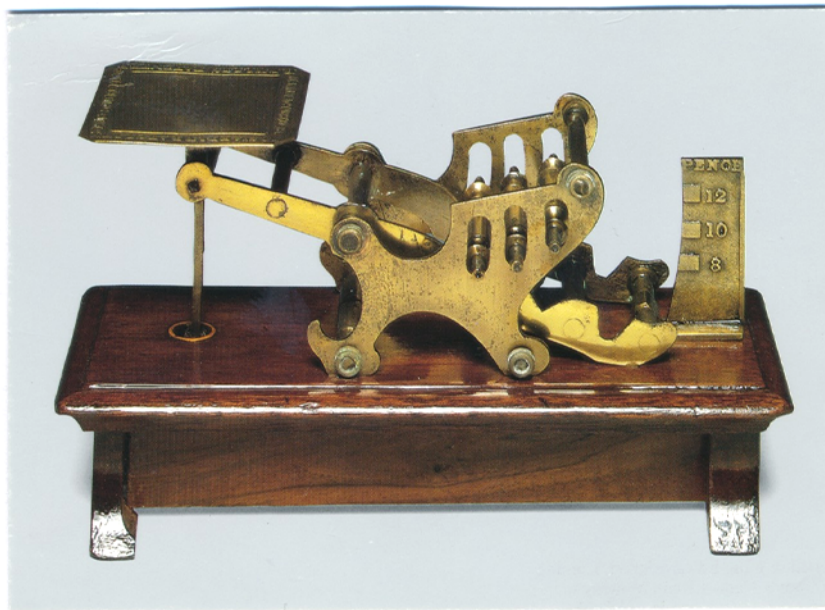
20



22



23



A fine selection to peruse.



26



40



48



54



97



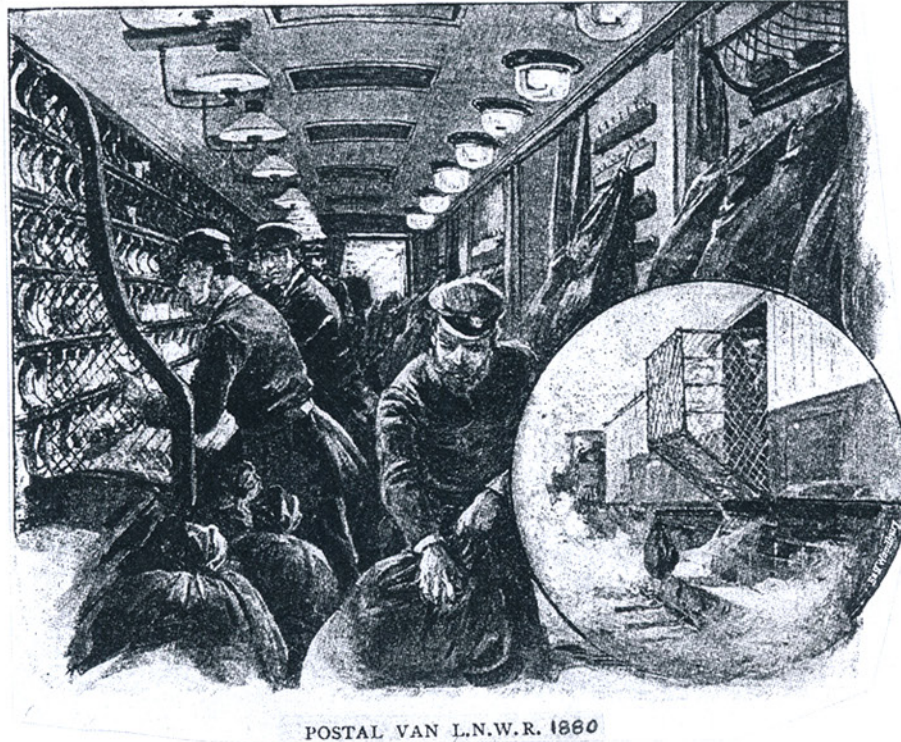
65



70



66



POSTAL VAN L.N.W.R. 1860

1. A MAGENTA MALTESE CROSS. 1d Black plate 1a. Lettered AD. A very lightly placed strike on a choice adhesive with splendid margins. Two certificates accompany:- HR Harmer LTD 1952 and H.F Johnson 1951. A magnificent adhesive. £1250
2. Plate 1a. 1d Grey-Black. Very worn impression. Lettered IG. Very choice well cut margins. A light double strike of the Maltese cross in red. Quite superb. £400
3. 1d Black plate 1b. A PAIR lettered RH-RI. Good to large well cut margins and red Maltese crosses. Clean and bright. **£650**
4. 1d Intense Black plate 1b. Lettered FE with good-ENORMOUS margins and a vivid orange-red Maltese cross. Very striking. £375
5. 1d Black plate 1b. Lettered TH with good-large-huge margins and a very lightly placed Maltese cross in orange-red. A lovely adhesive. Spotlessly fresh. £425
6. PLATE 1b 1d Intense Black. A lovely single lettered CC. Perfectly cut and a bright orange-red Maltese cross clear and crisp. Very fine. £350
7. 1d Grey Black plate 2. A stunning example lettered NB with good-large-huge margins and a perfectly struck Maltese cross in red. Light, clear and upright. In all respects outstanding. £450
8. 1d Black plate 2. An outstanding single lettered IK. With good-ENORMOUS margins and a featherlight Maltese cross in orange-red. Very choice. £385
9. BLACK PLATE 2. A PAIR IN RED-BROWN. FA-FB. Large-enormous margins and two crisp Maltese crosses. **£325**

Paper and Watermarks of the Line Engraved Issues.

The paper which was supplied to the printers by the Government, was at first watermarked with a small crown repeated 240 times in the sheet, the margins having the word POSTAGE at top and bottom and twice at each of the sides, the six repetitions of the word being joined up by a border of five watermarked lines. The paper was at first made by Mr Stacey Wise of Rush Mills, Northampton. On his decease his widow continued the business and later (on her subsequent marriage to Dr Fiacroft) the means of a Steel Die. The Bits (as they are called) were then sent to the paper makers, and were sewn on to the gauze over which the almost liquid pulp is spread in the manufacture of paper.

3.



13



3



9



4



5



6



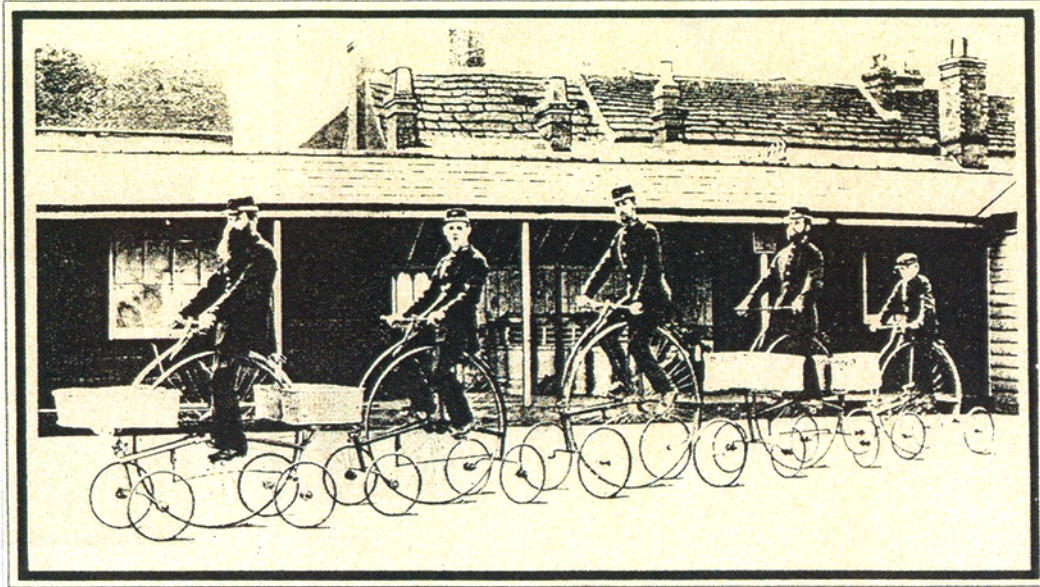
7



8



17



10. BLACK PLATE 2 IN RED-BROWN with a TOTNES CDS. With excellent margins. Lettered RJ. Rarely seen with a CDS. **£625**
11. 1d VERY GREY BLACK PLATE 3. An outstanding example lettered HI. Perfectly cut with half an upright Maltese cross in bright orange-red. **£385**
12. 1d BLACK PLATE 3. A FABULOUS SINGLE lettered MA. A stunning strike of a Maltese cross in red. In all respects exceptional. **£525**
13. PLATE 4 USED IN MAY. A full margined example lettered HK tied to wrapper to OXFORD by a red Maltese cross. OXFORD CDS in red and London CDS in black for MAY 29 1840 A VERY EARLY DATE FOR PLATE 4. File crease strengthened with hinges. FEW PLATE 4 1d Blacks used in May are known. RARE AND IMPRESSIVE. A Royal certificate accompanies. **£725**
14. BLACK PLATE 5 IN RED-BROWN. 1d on entire written on Mourning paper. Lettered NB. Full, perfect margins. A lovely Maltese cross to BISHOPSGATE. A perfect FROME CDS NOV 22 1842 and red CDS a day later. Rarely seen on cover. **£185**
15. PLATE 6. Lettered MA with excellent margins on 3 sides, the 4th being part sheet marginal. A featherlight Maltese cross in red. **£450**
16. plate 6. 1d Intense Black. Lettered JG. With generously cut margins and a full and upright Maltese cross in bright orange-red. Very fine. **£350**
17. 1d INTENSE BLACK PLATE 8 tied to entire letter to BROMSGROVE. Lettered DI. Full margins, large to enormous on 3 sides, clear on 4th. Wonderfully clean with a superb CIRENCESTER CDS on reverse flap for March 15 1841. **£450**
18. 1d Black plate 8 in Red-Brown. A super example lettered HH. With good-large margins and a crisp upright Maltese cross. **£80**
19. 1d Black plate 9. Lettered KC showing horizontal guide line through value and K square. Perfectly cut and a complete and upright Maltese cross in black. **£425**
20. PLATE ELEVEN ON COVER. CAT £16,000. A lovely example lettered AF. Full margins and tied to envelope of very small size by a black Maltese cross. The shade is Greyish Black. Neatly addressed to WHITCHURCH. With a clear and complete WHITCHURCH CDS for April 1841 on reverse flap and a fine black seal MOST RARE IN SUCH QUALITY. A Royal certificate accompanies. **£6500**



10



11



14



24



12



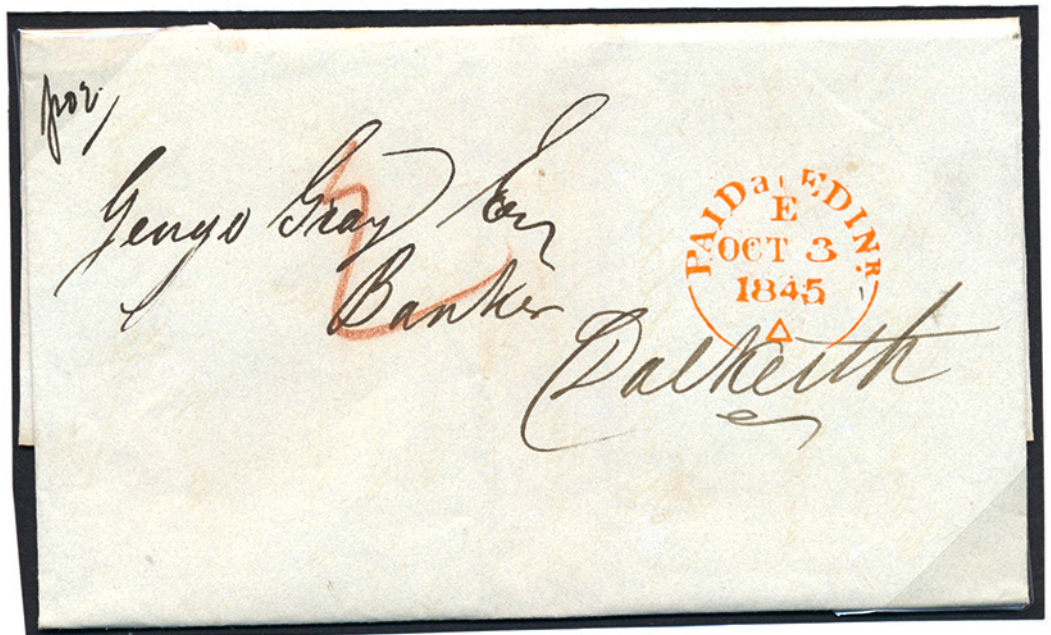
15



16



18



34

21. PLATE ELEVEN IN RED-BROWN. A superb example lettered KI. Good-large-huge margins and a corner Maltese cross. A quality example. **£140**
22. 1840 2d PALE BLUE plate 1. A lovely example lettered BA. Very well cut margins and a particularly lightly placed Maltese cross in red. **£450**
23. 1840 2d Blue plate 1. A very choice example lettered EH. With outstanding margins and a light, central and upright Maltese cross in red. A quite beautiful adhesive. **£575**
24. UPRATED MULREADY LETTERSHEET. Showing a crisp Maltese cross and a clear upright ULVERSTONE CDS, both in orange with 'TO PAY 2'. Reverse shows a 'AO5' inspectors mark, also in orange. Light soils but very clean and tidy ay face. The lettersheet has been refolded by the sender to make in smaller. Perhaps to accommodate an enclosure, hence the uprate. **£385**
25. SG 8a 1841 1d Red-Brown on very blued paper. SUPERB MINT. Lettered HE with flawless margins, full original gum and single hinge remain. **£240**
26. NUMBER 4 IN MALTESE CROSS. The very best strike on 1841 1d Red-Brown. Lettered GH with full margins. The hardest of the numbered crosses. **£265**
27. NUMBER 6 IN MALTESE CROSS. A super strike on 1841 1d plate 29 lettered LH with 4 excellent margins. **£70**
28. A DISTINCTIVE DUBLIN MALTESE CROSS. 1d Red-Brown plate 33 lettered HE. With excellent margins on all sides and a lovely clear strike. **£70**
29. A GREENOCK DISTINCTIVE MALTESE CROSS on 1841 1d Red-Brown plate 24. Lettered PG with margins cut good-large. A fine strike. **£110.**
30. NUMBER 8 IN MALTESE CROSS on SG 14 2d Blue plate 3. Lettered GB. Good to huge margins and a lovely crisp strike. Rare this fine. **£725**
31. 1841 2d Blue plate 3. Lettered BD. Lovely balanced margins. A light, crisp Maltese cross. Very fine. **£110**
32. SG 17 1d plate 32. With a lovely crisp steel CDS. **£75**
33. SG 23 2d plate 4. A crisp 338 numeral of HARROWGATE. A lovely fresh example. **£70**



PRINTING PRESSES
used to print the
Penny Black.



CHALKY.

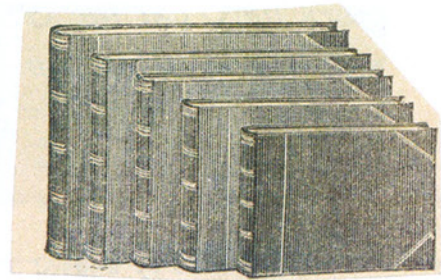
A patent was granted to Thomas de la Rue for the invention of a "security paper coated with a solution of suspended particles of "chalk", it being claimed that as the ink was largely deposited upon this substratum, any attempt at removal of postmarks, etc would inevitably destroy the printed impression also. "Chalky" papers have been used for printing of issues of Great Britain and her colonies since 1902, but not consistently. An interesting variant of the idea was the diamond-latticed lines of chalk on the surface of the "Arms" types of Russia, 1909. "Chalky" papers show a glossier surface than normal and touched with silver a dark mark is left. Stamps on chalky paper should be floated off, not totally immersed.



Sir Lauder Brunton.- Physician on Philately

There are a great many people who die in this world from the very simple malady of having nothing whatever to do. They pass their lives in accumulating money, with no relaxation, and then when they retire from active work they die of ENNUI. They come to me and complain of so many things, and say what shall I do, I tell them to collect, it will add ten years to their lives. The wise men do so, others do not and the wise men live on. Ththa is the use of collecting stamps at the end of life.





34. 1845 'PAID AT EDINR'. A dazzling orange CDS on entire wrapper to DALKEITH. A boxed Dalkeith dated cancel on reverse. The cancel couldn't be better. **£45**
35. PLATE 167 1d. SG B2 and C1. A MATCHED PAIR lettered TH. Both adhesives are perfectly choice. Each showing 2 dots in upper margin. **£60**
36. SG 29. 1d plate 27. With a crisp GLASGOW steel CDS. **£60**
37. LATE USAGE OF SG 38 1d. A very fine upright NEWCASTLE-ON-TYNE CDS for JUNE 22 1897. **£80**
38. PEARSON HILL Type 2 cancel. A wonderful strike on SG 39 1d plate 36. **£115**
39. SG 40 1d plate 47. An impressive strip of 4 with crisp STIRLING CDSs and 308 numerals. **£120**
40. SG 44 1d Lake-Red plate 138 with an exceptionally well struck MALTA steel CDS. **£70**
41. SG 43 1d plate 162 and SG 94 plate 14. Together on piece with crisp GAINSBOROUGH steel CDSs. **£70**
42. SG 48 1/2d plate 11. A pristine UNMOUNTED side of sheet PAIR. Quite untouched. **£150**
43. SG 48 1/2d PLATE 20. A lovely single. The plate number is wonderfully clear. **£45**
44. SG 52 1 1/2d plate 1. With parts of two steel CDSs. Very fine indeed. **£80**
45. SG 52 1 1/2d plate 3. A flawlessly perfect mint unmounted example. **£240**
46. SG 90 1/- Green. With a 923 numeral of WORTHING. VFU indeed. **£80**
47. SG 94 4d plate 13. A fine crisp London CDS on a very well centred single. **£65**
48. SG 102 3d Deep Rose plate 7. Wonderful colour. A NEW-MILLS steel CDS perfectly struck. **£95**
49. SG 102 3d plate 7. DEEP ROSE. With a crisp and light PARK LANE steel CDS. **£40**

WILLIAM DOCKWRA & THE 1st POSTS

In 1680 William Dockwra set up a local Post in London. He opened several hundred offices where messengers called for letters every hour and sent them out for delivery four to twelve times a day; the postage was 1d. Dockwra appears to have been a most able man, he divided London as it then existed (more or less between Westminster and Blackwell) into seven districts with a sorting office in each, whence the letters were sent out for delivery or handed over to the General Post Office for transmission to the provinces and abroad. He set up a system of Registration with compensation up to £10 per letter for loss. This Penny Post was held to be a breach of the Postmaster-General's monopoly, and he was taken over by the Crown in 1683, Dockwra eventually received a grant of money from William and Mary, and was appointed Controller of the Penny Post in 1697.



46



47



49



50



51



55



56



52



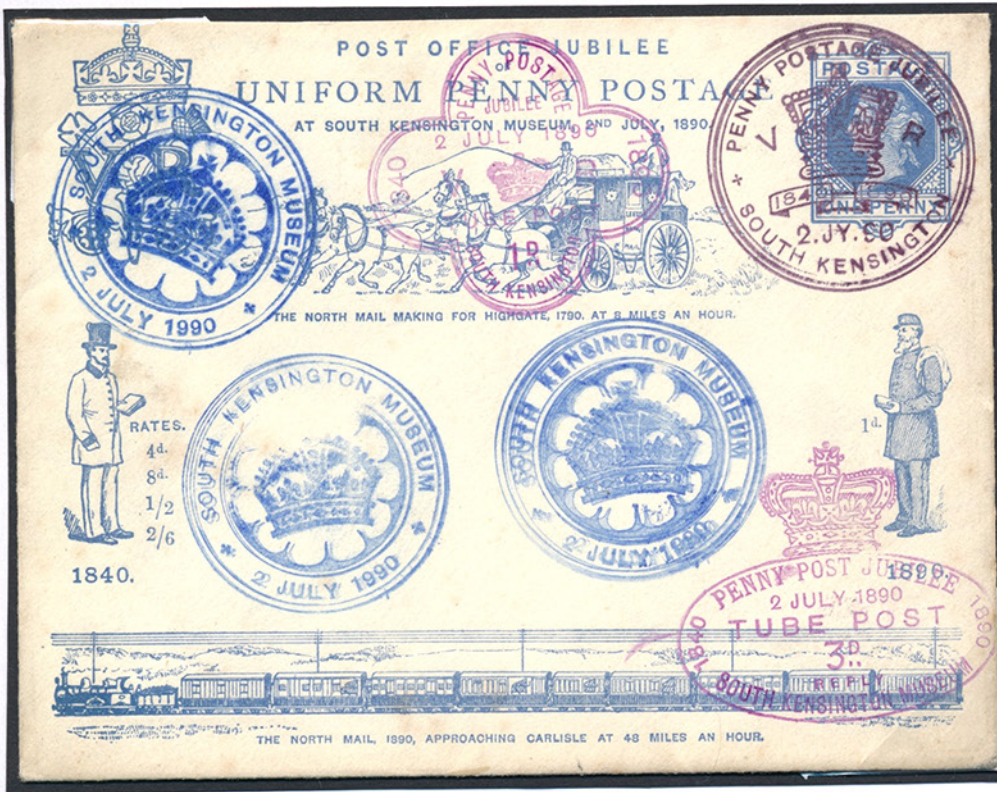
57



58



59



67



69



72



60



61



62



63



64



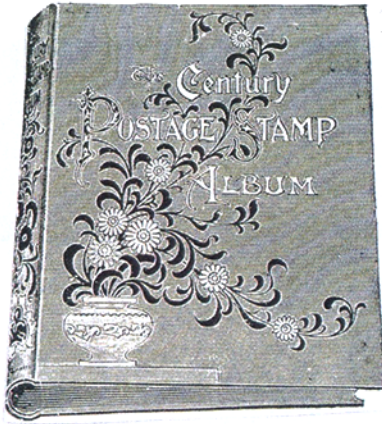
68



71



74



50. SG 103 3d plate 7. With a wonderfully struck KINCARDINE thimble CDS. **£60**
51. SG 102 3d Deep Rose plate 8. With a wonderful 1352 telegraphic circle on London Victoria. **£60**
52. SG 117 1/- plate 5. With SEETHING LANE CDSs and sheet margin showing inscription "4 SHILLINGS PER Row OF 4". **£40**
53. SG 117 1/- Green plate 6. From the corner of the pane showing inscription 'ONE POUND PER SHEET OF 20'. A lovely YARMOUTH THE BEACH CDS. **£75**
54. SG 117 1/- plate 6. Very choice with a superbly placed BOLTON steel CDS. **£55**
55. SG 122b. 6d plate 11. With a full DELVIN steel CDS. A lovely strike. **£55**
56. SG 123 6d Pale Buff plate 11. With a pristine SPILSBY steel CDS. **£125**
57. SG 134 5/- ROSE plate 4. Very choice with excellent centring and a very light duplex cancel. The colour is wonderful. Superb quality. **£675**
58. USED IN ST MALO. SG 141 2 1/2d plate 6. A lovely crisp and upright CDS. **£70**
59. SG 141 2 1/2d plate 15. With a light steel CDS. **£60**
60. SG 141 2 1/2d plate 16. SUPERB MINT. Wonderfully centred. Lightest hinge trace. Very fine. **£250**
61. SG 147 6d plate 16. A lovely example with a crisp corner CDS. **£70**
62. SG 158 3d plate 20. With a light VENTNOR steel CDS. **£50**
63. SG 160 1/- plate 18. A tiny part LIVERPOOL CDS at corner. ENTIRE PROFILE CLEAR. As fine as they come. **£50**
64. SG 163 1/- Orange-Brown plate 14. With a pin sharp GREENOCK steel CDS. A lovely strike. **£165**
65. SG 178 2/6d. A fabulous PORT-GLASGOW steel CDS. Perfection. **£180**

Modern Stamp Collecting. Fred J Melville 1940

The first British postage stamp, the 1d black, circulated to the extent of many millions in 1840. In the sense there is still an abundance of them preserved to stamp collectors. Yet while good used copies could be obtained for 3d to 4d each at the end of the nineteenth century, sixty years after their issue, the retail price is now 7s 6d to 10s and is likely to continue to rise. At a London auction was sold the collection of nearly 30,000 1d blacks gathered by the late Mr E H Williams. For two long daily sessions the sale-room was crowded with buyers, and the total realised was £7,250. The man in the street might suppose that 30,000 stamps of one kind unloaded on the market at one time would cause prices to slump, but that was very far from being the case.



73



78



85



75



77



79



76



80



82



83



84



86



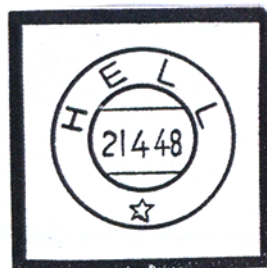
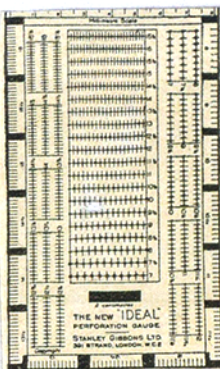
87



88

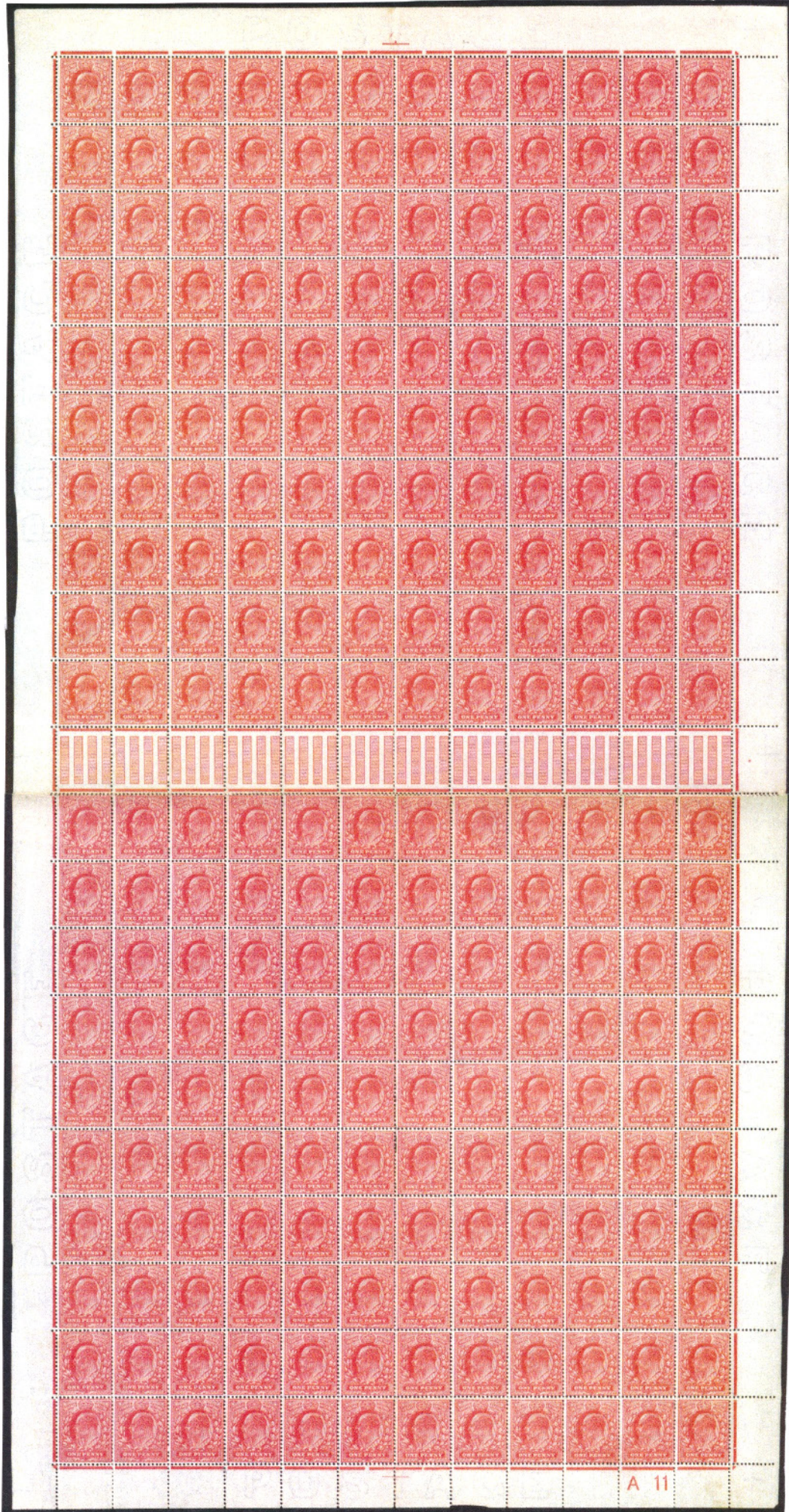
The earliest form of stamp collecting consisted of the accumulation of large quantities of cancelled specimens to be employed for the decorative or similar whimsical purposes, and was far removed from the careful and intelligent collection probably originated in the fable that to collect a million used postage stamps would secure the entry of an orphan into a charitable institution, a belief that is shared by the credulous to this day, although refused on all possible occasions by those who are aware of the futility of such an undertaking.

66. SG 183 10/- Ultramarine. AN IMMACULATE SINGLE. A glorious HALIFAX. Finest quality here.
£450
67. 1890 POST OFFICE JUBILEE illustrated envelope bearing six strikes of the special postmarks used during the celebrations. **£160**
68. SG 194 6d. Perfectly centred a light crisp MONK BAY steel CDS. Very fine. **£165**
69. CONTINENTAL NIGHT MAIL double ringed CDSs on SG 201 2 1/2d. An attractive block of 4.
£40
70. SG 208a 6d. A wonderful block of 8 tied to piece together with SG 198 1 1/2d by crisp MANCHESTER GRANDSTANS steel CDSs. A spectacular usage. **£250**
71. SG 212 £1 GREEN. Excellent colour with Lombard steel oval cancels. A clean and attractive example. **£265**
72. SG 214. 1/-. A very choice block of 4 with crisp JARROW steel CDSs. **£350**
73. SG 218 1/2d. A GUTTER BLOCK OF 12. As issued un touched unmounted. Very handsome.
£90
74. FIST DAY OF ISSUE. SG 219 1d with a crisp, upright LONDON CDS for JAN 1 1902. **£60**
75. SG 249 7d. A delightful BLOCK OF 12 with crisp GUERNSEY steel CDSs. Quite perfect. **£125**
76. SG 251a. 9d. With a crisp MAIDSTONE steel CDS. Perfectly struck. **£25**
77. SG 257. 1/- Green and Carmine. A glorious BLOCK OF TWELVE. With crisp DUMFRIES CDSs. Perf split to one adhesive. The colours are wonderful. A brilliant multiple. **£425**
78. SG 260 2/6d VFU with a lovely full and upright LOMBARD ST Registered OVAL. **£80**
79. SG 266 £1 Dull-Blue Green. Perfect colour and freshness and a light, upright steel CDS. An outstanding example. **£425**
80. SG M4 (3) 15 x 14 perf 1/2d Deep Dully very worn blotchy print. A superb CDS example.
£225
81. SG 273. M6 (2). 1d DEEP ROSE RED. A COMPLETE SHEET OF 240 ADHESIVES. With every stamp and sheet surround FULLY UNMOUNTED MINT. The reverse is perfectly clean and all stamps are free from any creasing. Showing control A11. With wonderful colour and freshness. A REMARKABLE SERVIVOR. **£1850**



Hell

A village (population 275) in Lanke canton Nord-Trondelag, central Norway, on Strinda Fjord, 16 miles east of Trondheim.





AN ACT
FOR THE
SETTLING
OF THE
POSTAGE
OF
ENGLAND,
SCOTLAND and IRELAND.

At the Parliament begun at Westminster the 17th Day
of September, Anno Domini 1656.



LONDON:
Printed by Henry Hills and John Field, Printers to
His Highness the Lord Protector. 1657.

First Post Office Act, 1656

82. SG 275a 1d ANILINE-ROSE. Tied to piece by a superb BIRMINGHAM CDS. **£120**
83. SG 295 6d. A lovely light steel CDS. Exceptional colour. **£55**
84. SG 306 9d with a fine CHANCEWATER steel CDS. **£35**
85. SG 319 10/-. A very fine single. Well centred, wonderfully fresh and a featherlight CDS which surrounds a clear Kings portrait. **£350**
86. SG 401 5/- Rose-Carmine. With a featherlight steel CDS set well clear of Kings portrait. **£140**
87. SG 401 5/- Rose-Carmine. With lightly placed LONDON CHIEF OFFICE CDSs for MAY 1914. **£85**
88. SG 405 2/6d Deep Yellow-Brown. A featherlight ARMY POST steel CDS. **£120**
89. SG 407 2/6d Grey Brown (worn plate). A choice mint unmounted single. Wonderfully centred and amazingly fresh. **£475**
90. SG 410 5/- Pale Carmine very worn plate. Superb mint. A lovely MM example showing excellent wear. **£375**

Early Channel Island Post

Prior to the establishment of Post Offices in Jersey and Guernsey and a regular packet service to the Islands in 1794, letters for those places were sent to an agent, usually at Southampton but occasionally at Brixton or Portsmouth; master and 1d for each agent. Letters from the Channel Islands to England were handed over to the post office at Southampton by the ship's captain and therefore cost only 2d on top of the postage. Most of the agents were merchants but some were also ship owners and one or two shopkeepers or bankers. Many of the London coffee houses also acted as agents and bags for particular ship's captains were often to be found in them.



89



90



91



92



96



93



94



98



95



99



100



91. SG 451 5/-. Half a crisp YORKSHIRE CDS. **£65**
92. SG 041 1/2d ARMY OFFICIAL. A superb mint CONTROL 'P' block of 6. Gum crease on 2 with 4 adhesives MINT UNMOUNTED. **£95**
93. SG 045 6d ARMY OFFICIAL. A crisp STIRLING CDS. **£45**
94. SG 068 1/- GOVT PARCELS. A crisp NEWTOWN steel CDS. **£85**
95. SG 072 1/- GOVT PARCELS. With half a crisp steel CDS. **£140**
96. SG 037 1d OW OFFICIAL. Tied to OHMS piece by a crisp upright Edinburgh CDS. A BPA certificate accompanies. **£60**
97. SG 038 2d OW OFFICIAL. With a crisp upright SOUTH DISTRICT OFFICE CDS. Very fine indeed. **£275**
98. SG 048 1/2d ARMY OFFICIAL. A mint unmounted BLOCK OF 42. A gum crease on two with minor creasing here and there but a really very striking multiple. **£130**
99. SG 0103 1 1/2d ADMIRALTY OFFICIAL. An upright BARROW IN FURNESS steel CDS. **£70**
100. SG 0104 2d ADMIRALTY OFFICIAL. A clear and upright GOSPORT CDS. **£80**

Behind the stamp album

Mourning Stamps. The mourning stamps were not thought of until as late as 1923 is a little surprising. It used to be thought that the 7d grey black of Great Britain marked the passing of King Edward VII because it appeared a few days after the King's death in May 6. But in fact they had been prepared some months earlier.