

A VERY HAPPY NEW YEAR!



19



23



14



26



46



42



47



48

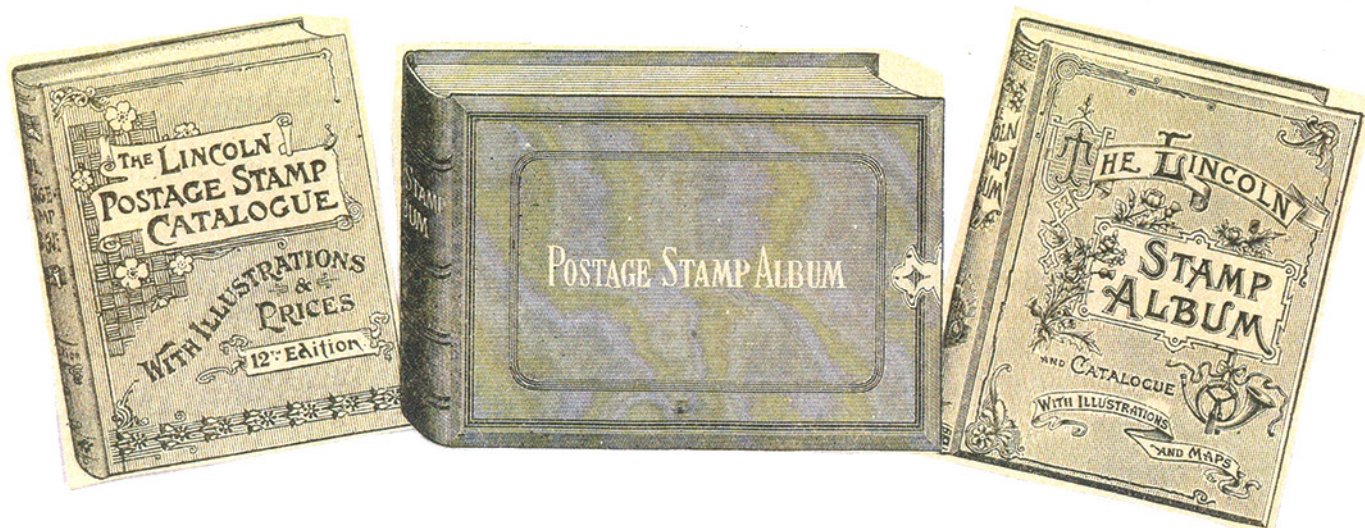


49



50





EXTENDED PAYMENTS.

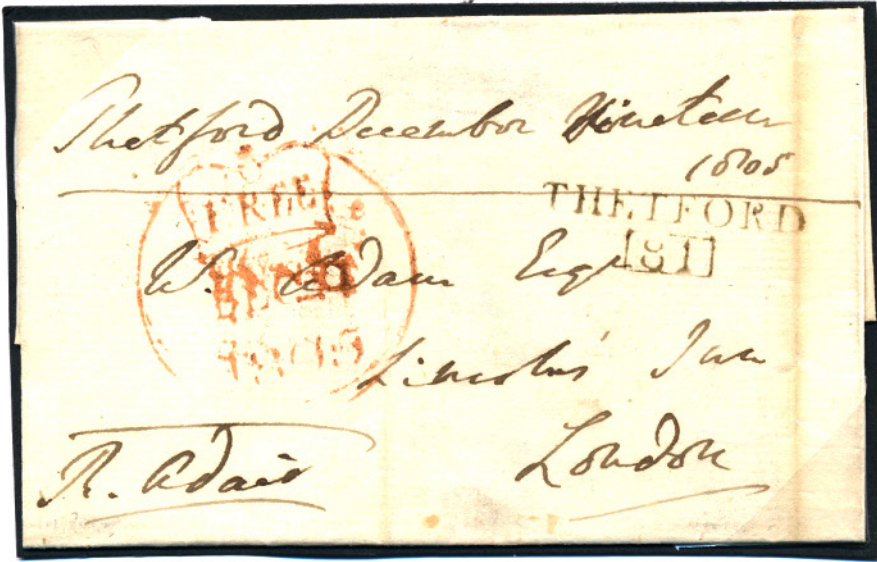
I am very happy to offer extended payment on any items you would like to add to your collection. In this way you can fill those gaps that would otherwise remain empty.

1. 1805 Wrapper. A fine THETFORD 81 mileage mark and a good large crowned FREE CDS. **£60**
2. MAY 8th 1840. Entire letter of 3 pages to AYR. With handstruck 1 endorsed 'PP'. A very good GATEHOUSE box for May 8 1840. **£185**
3. PLATE 1a. 1d very grey black. Very worn plate. An exquisite single lettered PC. Enormous margins and a full strike of a Maltese cross in red. The star of the show. **£650**
4. Plate 1a VERY WORN IMPRESSION. Lettered TF with 4 outstanding margins and a featherlight Maltese cross in red. This really is a magnificent example. **£450**
5. 1d black plate 1b. A good – large margined example lettered NI tied to wrapper to Worcester by a red Maltese cross. When opened out the wrapper shows a bold watermark to the paper:- WHATMAN TURKEY MILL 1840. Reverse a good BIRMINGHAM CDS for JAN 21 1841 in orange. The adhesive shows the listed variety:- N retouched. Fine and uncreased. **£425**
6. PLATE TWO 1d black. A FABULOUS ADHESIVE. THE 'AD' RE – ENTRY. With margins good – ENORMOUSE and a superb Maltese cross in orange – red. **£525**
7. A RICH BROWN MALTESE CROSS. A double strike on 1840 1d black plate 2 lettered HC. Wonderfully cut and very striking. **£450**

THE PENNY POST. STAFF. 1964. $\frac{1}{2}$ d CARRIAGE OF 1709.

On October 4, 1709, a suprising individual, by name Charles Povey, impudently challenged the Post Office monopoly by starting a privately run enterprise which he called the "Half-Penny Carriage". It was modelled on very similar lines to the Penny Post of Dockwra, except it was confined to the busy parts of London and Westminster and to the borough of Southwark. Receiving houses were set up in shops and small businesses, and for the price of one halfpenny Povey undertook to collect and deliver letters and packages. He popularized the use of bellmen by having messengers patrol the streets every hour ringing a bell so that people, on hearing, could be waiting with their letters and spared the trouble of going to one of the receiving houses. Doubtless the idea was intended by way of advertisement, but people quickly appreciated its convenience, and his undertaking was popular and successful. Naturally it was quickly suppressed by the Crown. Poveys Half-Penny Carriage lasted exactly seven months, when proceedings were taken against him and was fined £100, along with several of his bellringers and shopkeepers who, having acted as receivers, were fined for their part in the venture.

3.



3



4



6



7

1



8



9



2



5



10



11

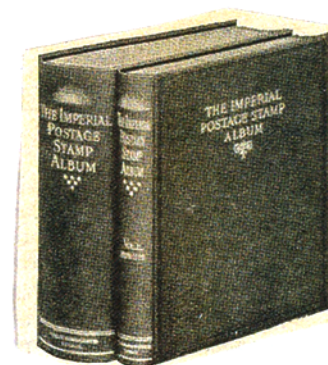
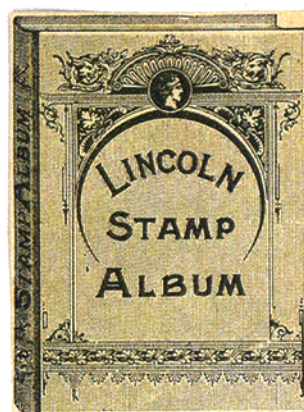


12



13

8. BLACK PLATE TWO 1d in red – brown. A fine example lettered QG. Lovely margins and a crisp Maltese cross. Not easy. £165
9. 1d grey – black plate 3. A perfect shade lettered CE. Lovely margins and a featherlight and upright Maltese cross in orange – red. **£375**
10. PLATE 3. 1d grey – black. A magnificent example lettered EG. Large – HUGE margins and the lightest complete Maltese cross in red. Finest quality here. £450
11. PLATE 3. VERY GREY BLACK. A remarkably pale shade. Free from plate wear. Lettered HI with excellent margins and a vivid red Maltese cross. **£450**
12. 1d intense black plate 4. Lettered TD. Margins cut good – ENORMOUS. A red – orange maltese cross. In all respects outstanding. A Royal certificate £525
13. 1d intense black plate 5. An outstanding adhesive. Lettered FC. Superbly cut and a crisp complete Maltese cross in vivid red – orange. Wonderful single. £425
14. PLATE 7 UNMOUNTED MINT with sheet margin and inscription. 1d black lettered TI with large – HUGE margins and showing inscriptional detail at bottom. The reverse with full untouched original gum. Never hinged. A minor natural gum crease along right side unseen at front. A remarkable adhesive in glorious condition. £4750
15. PLATE 8. THE ORIGINAL 'RL' RE-ENTRY. A superb example. All of the re – entry is clear of the crisp black Maltese cross. With outstanding margins. A delight so fine. £425
16. PLATE TEN. A GIANT OF A STAMP. Lettered QA with large – NORMOUS margins and a light complete Maltese cross in black. A perfectly clear 'O' flaw and excellent vertical guide line in North east square . In all respects exceptional. £725
17. PLATE 10. 1d black lettered OI. Very well cut and cancelled by a lightly applied black maltese cross. Perfect quality. Very fine. £475
18. UPRATED MULREADY LETTERSHEET. Showing a crisp Maltese cross and a clear upright ULVERSTONE CDS, both in orange with 'To Pay 2'. Reverse shows a 'A05' inspectors mark, also in orange. Light soils but very clean and tidy at face. The lettersheet has been refolded by the sender to make it smaller. Perhaps to accommodate an enclosure, hence the uprate. **£385**
19. 'HANDSWORTH PENNY POST' in blue. A full upright strike on 1843 1d plate 32 in combination with a Maltese cross tied to small piece. Lettered DL with 4 excellent margins. Outstanding piece. A Jackson certificate accompanies. £425



5.



15



16

18



17



21



22



24



25



27



20



28



34



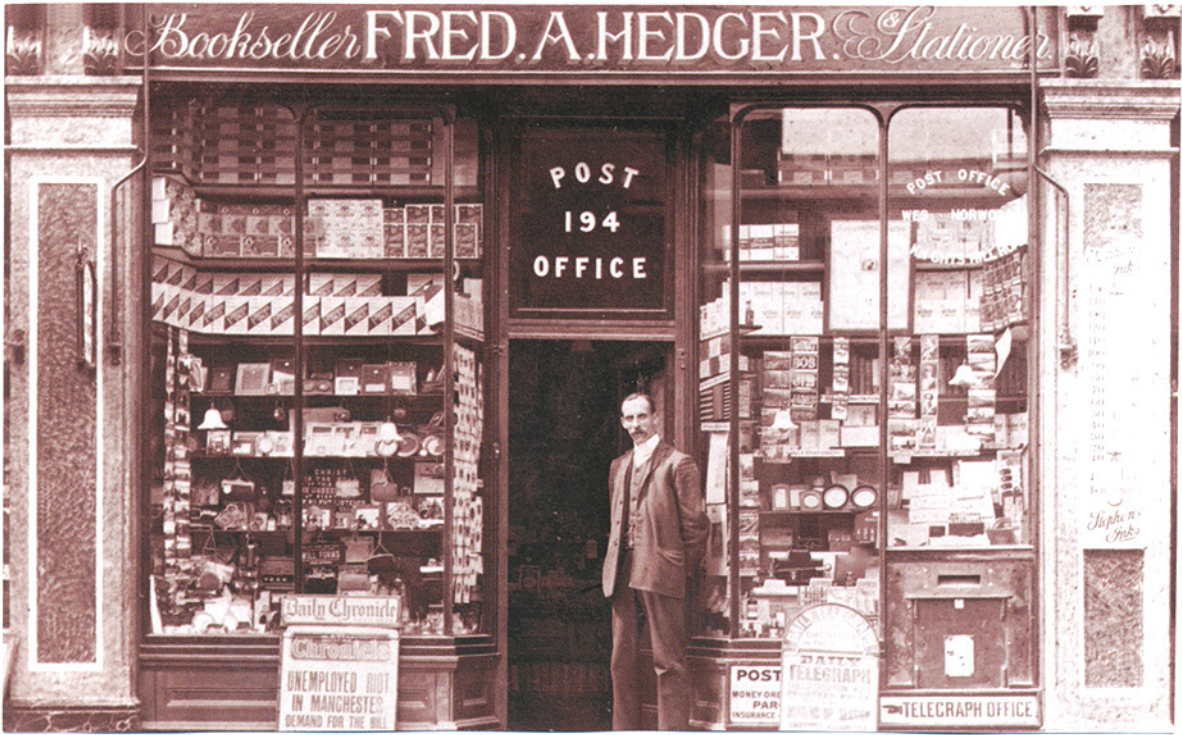
29

A JOINT EFFORT

The greatest number of people involved in the design of a single stamp was in 1839-40, when the world's first stamps were being planned. Apart from the 2600 entrants in the Treasury Design Competition the actual stamps were based on an idea Charles and Frederick Heath on a background engine-turned by Jacob Perkins.



20. A BLUE MALTESE CROSS. 1842 1d. Perfectly cut. Lettered CK and tied to wrapper by a crisp maltese cross in blue and alongside a lovely BLUE TRURO CDS for JAN 23rd. Upper flap an excellent FALMOUTH CDS in red. Displays perfectly, lovely and colourful. **£850**
21. A DISTINCTIVE DUBLIN MALTESE CROSS. 1d red – brown plate 33 lettered HE. With excellent margins on all sides and a lovely clear strike. **£70**
22. A wonderful DUBLIN MALTESE CROSS. Superb strike on SG 8 1841 1d red brown lettered JH. Fine full margined. **£85**
23. YORK. A fabulous strike of this most distinctive maltese cross on 1841 1d plate 26. Lettered MB with outstanding margins. The cross is perfect and complete. Exceptional and a Royal certificate accompanies. **£425**
24. Number 1 in maltese cross. A lovely crisp strike on 1841 1d with 4 fine margins. **£70**
25. Number 3 in maltese cross on 1841 1d lettered GJ. Very well cut. A crisp strike. **£85**
26. Number 4 in maltese cross. The very best strike on 1841 1d red – brown. Lettered GH with full margins. The hardest of the numbered crosses. **£265**
27. NUMBER 6 in MALTESE CROSS. A super strike on 1841 1d plate 29 lettered LH with 4 excellent margins. **£70**
28. Number 10 in maltese cross. A fine clear strike on 1841 1d plate 3. Lettered CL with 4 excellent margins. **£140**
29. Number 12 in Maltese cross. A lovely crisp strike on 1841 1d plate 36. Lettered BH with wonderfully cut margins. Super quality. **£200**
30. RED – BROWN SCOTTISH NUMERAL on 1850 1d lettered PC. Just into top corner. Tiny corner crease but a very fine cancel. More red than brown. **£65**
31. 1841 2d blue. PART SHEET MARGINAL. Plate 4. A lightly applied numeral cancel. Well cut with margin at left, showing part inscriptional detail 'T REMOVE THE GUM' (Be careful not...) superb quality. **£140**



30



31



32



33



35



36



37



39



38



40



32. SG 14 2d blue plate 4. With fine full margins and Queens features clear of a numeral cancel. Shows a clear SHIFTED TRANSFER at top. **£75**
33. 1841 2d blue plate 4. A lovely well cut single cancelled by a crisp 466 LIVERPOOL SPOON. Very fine. **£80**
34. 1841 2d blue plate 4. A perfectly cut STRIP OF 5. With London district duplexes. Middle stamp a 'PD' in red. Last two stamps half a French CDS. Perfect condition. **£165**
35. SG C6 plate 5. With a light crisp steel CDS lettered MG and showing the listed 'minute G' **£80**
36. SG 17. 1d MIS-PERF. A very striking variety being imperf at left side. **£55**
37. SG 17 1d plate 25. VFU a lovely crisp BATH steel CDS. Very fine. **£80**
38. SG 19 2d deep blue plate 4. VFU indeed with a partial crisp London District duplex **£50**
39. SG 23a 2d. A superb Pair with a single upright DUNDEE CDS and numerals either side. Quite lovely. **£185**
40. SG 27 2d blue plate 5. With a craps upright London district duplex. 47 being Southwark. **£175**
41. SG 29 1d red – brown. SUPERB MINT. Excellent centring. Outstanding colour and freshness. Original gum and hinge remains. Very fine. **£160**
42. CROSS HATCH CANCEL IN BLUE on SG 29 1d. from plate 39. Very unusual. Possibly an instructors mark. **£125**
43. SG 29 1d. lettered PD with a crisp partial upright steel CDS **£90**





44



41



43



45



53



64



76



52



51

44. 18 Feb 1846. Entire from Halifax to Ripponden, with third Halifax mark, the ringed "PAID.D.1". This mark was used from 1845 to 1849. The letter relates to a house purchase for which the vendor requires £320. The solicitor is haggling on behalf of the client and suggesting a reduced sum of £300!. The entire in choice condition. £65
45. SG 36 1d plate 46. With a lovely crisp steel CDS. **£95**
46. PEARSON HILL Type 2 cancel. A wonderful strike on SG 39 1d plate 36. **£115**
47. SG 40 1d plate 48. Cancelled by 4 X '1' inspectors marks. Very fine and unusual. **£80**
48. THE CUMNOCK COGWHEEL. A lovely strike on SG 43 1d plate 78. Very rarely seen. £125
49. SG 43 1d plate 160. With a full MISSORTED CIRCULAR MARK for the western District Office. With certificate. £90
50. EDINBURGH & NEWCASTLE SOUTH SORTING TENDER CDS. A wonderful strike on SG 43 1d plate 179. Very fine. £80
51. SG 48 1/2d plate 12. A MINT UNMOUNTED BLOCK OF 6. Quite without any blemish. **£275**
52. SG 48 1/2d plate 12. A pristine side marginal mint unmounted example imperforate at right. Lovely and fresh **£80**
53. SG 48 1/2d plate 20. A lovely single. The plate number in wonderfully clear. **£45**
54. SG 59 6d. cut square with good – enormous margins and a numeral cancel. **£385**
55. SG 66 4d rose – carmine. With a crisp and complete DUNDEE steel CDS and part numeral cancel. **£50**
56. SG 66 4d and SG 70 6d together on small envelope to Caltura, Ceylon. Cancelled by 518 numerals of Marlow. A CALTURA CDS in red also cancels the 4d. reverse a superb CALTURA post paid CDS hand dated in red ink 12th JAN 1860. With Marlow and London CDSs for Dec 8 & 9 1859. Minor opening faults. A nice early mix of values. £110
57. SG 95 4d deep vermilion. Plate 11. Superb mint unmounted. A dazzling adhesive. MOST RARE. **£450**
58. SG 95 4d plate 11. USED IN ALEXANDRIA. A lovely full BO1 cancel with a vivid red London 'PAID' CDS. **£45**
59. Sg 103 3d plate 7. With a crisp 152 telegraphic circle of Birmingham new street. **£45**
60. SG 102 3d deep rose plate 8. Perfectly centred. A crisp SNEEM steel CDS. Wonderful colour. **£60**
61. SG 102 3d deep rose plate 8. A very fine NEWRY steel CDS for 20 June 1872 **£45**
62. SG 109 6d plate 9. With a superbly applied DURSLEY steel CDS **£85**
63. Sg 117 1/- plate 6. A magnificent block of eight. Crisp upright SPRING ST. PADDINGTON steel CDSs. No perforation splits Exceptional quality. £450

Post Prandial.

From time to time we receive mildly mauled envelopes on which apologetic postmasters have written cryptic notes like 'damaged by snails'. At first we thought this had something to do with the speed of delivery, but apparently snails have taste for the gum on the envelopes and postage stamps and lurk in pillar boxes waiting for their favorite nosh to be delivered to them. So bad is the problem in some areas that pillar boxes are treated with pellets to kill the gourmet gastropods.



63



55



57



54



58



59



60



61



65

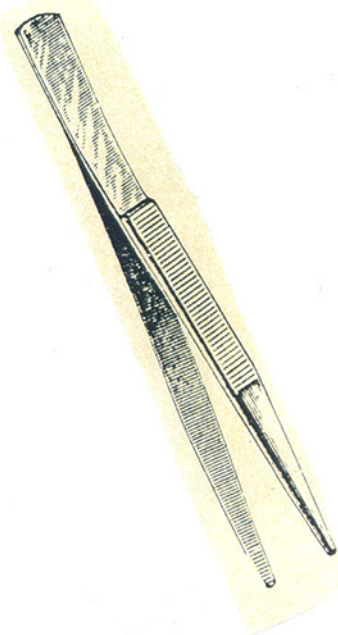
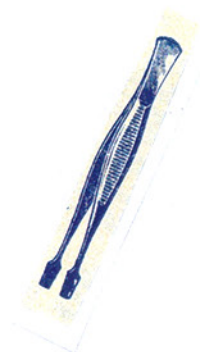


62

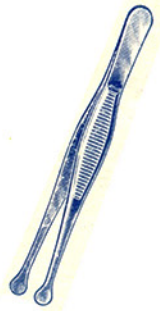
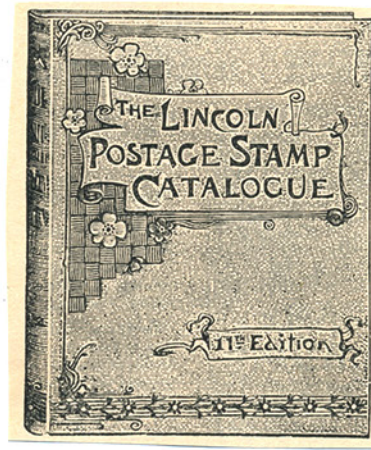
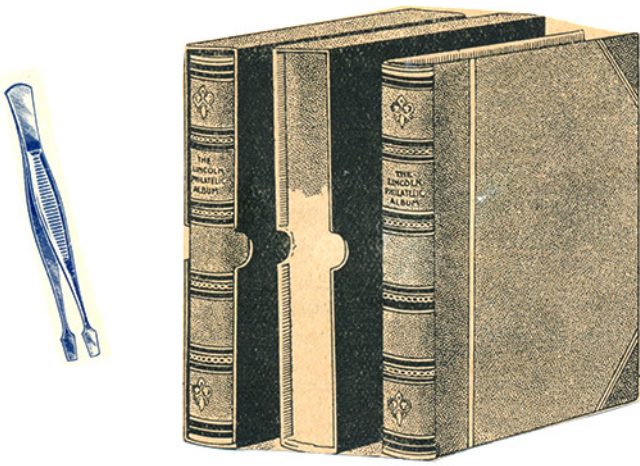


66





64. SG 126 5/- rose plate 1. A lightly used block of four. Couple split perfs top centre, otherwise a good strong block with excellent colour and a clean back. Centred lot wo left but multiples of this value are seldom seen, especially as a block of four. **£625**
65. SG 127 5/- pale rose plate 1. With a light and crisp 1438 telegraphic circle cancel. **£260**
66. SG 139 2 1/2d rosy – mauve plate 2. Very choice. Very lightly mounted. Almost mint unmounted. Exceptional quality and a BPA certificate accompanies. **£350**
67. SG 141 2 1/2d plate 8. Very well centred. A Newcastle Quayside steel CDS. **£55**
68. SG 141 2 1/2d plate 16. With a fine, upright LONDON steel CDS. **£60**
69. SG 147 6d plate 13. SUPERB MINT. Light hinge trace. Very fine indeed. **£250**
70. SG 153 4d sage green plate 16. A lovely crisp LONDON E.C steel CDS **£110**
71. SG 156 8d orange. A superb London steel CDS. Very fine indeed. **£220**
72. SG 158 3d plate 21 VFU a light HAMBLESIDE CDS. Most attractive. **£85**
73. SG 159 3d on 3d. wonderfully deep colours and tied to small piece by a crisp BELFAST steel CDS for AUG 26th 1883. Really most attractive. **£135**
74. SG 160 1/- plate 17. A pin sharp KINGSBRIDGE steel CDS. Lovely and crisp **£60**
75. SG 163 1/- plate 13. With a crisp ABERDEEN steel CDS. A lovely strike. **£75**
76. SG 167 1 1/2d. with a crisp upright BELFAST steel CDS. **£50**
77. SG 169 5d INDIGO. VFU half a crisp LONDON steel CDS. RPS certificate. **£95**
78. SG 178 2/6d. A fabulous PORT – GLASGOW steel CDS. Perfection. **£180**
79. SG 179 2/6d. Perfectly centred. A crisp and complete London district duplex cancel. **£40**
80. SG 180 5/- with a choice MARYPORT steel CDS. Wonderful quality. **£150**
81. SG 180 5/- with an absolutely choice LONDONDERRY steel CDS. Exceptional. **£150**



67



68



69



70



71



72



73



74



75



76



78



79



80



81



77



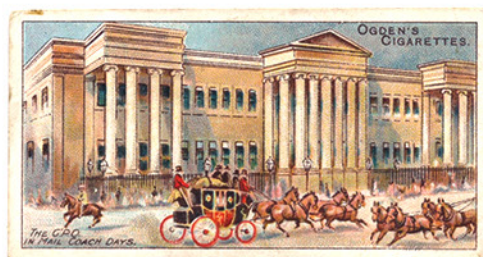
82

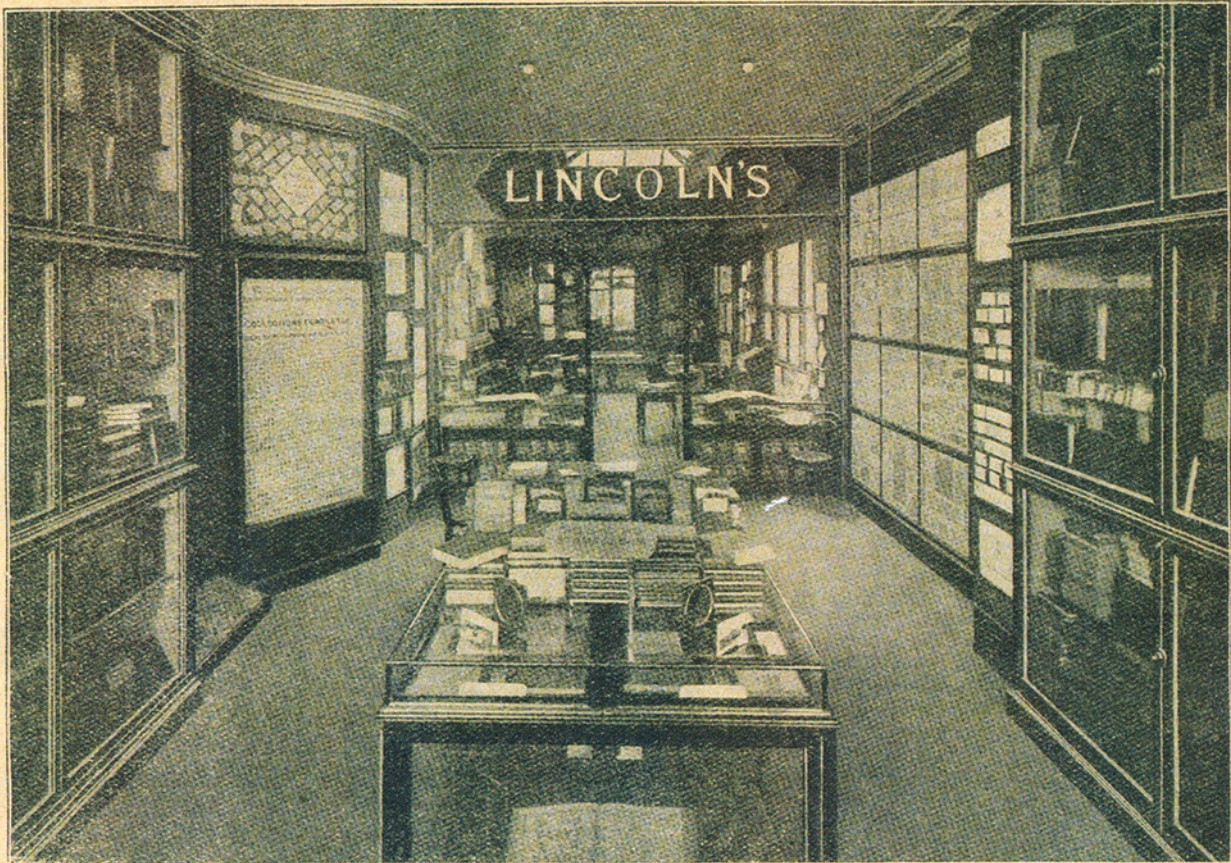


83



84

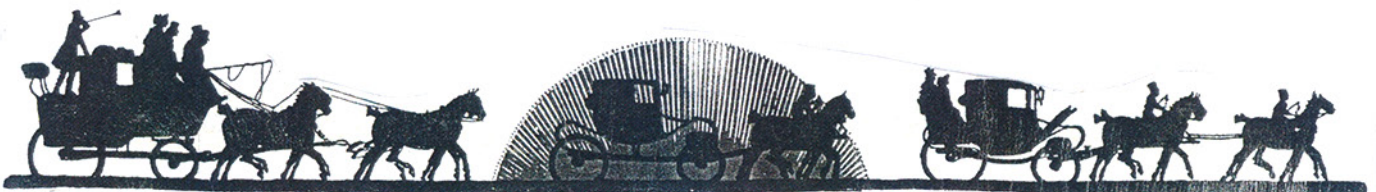


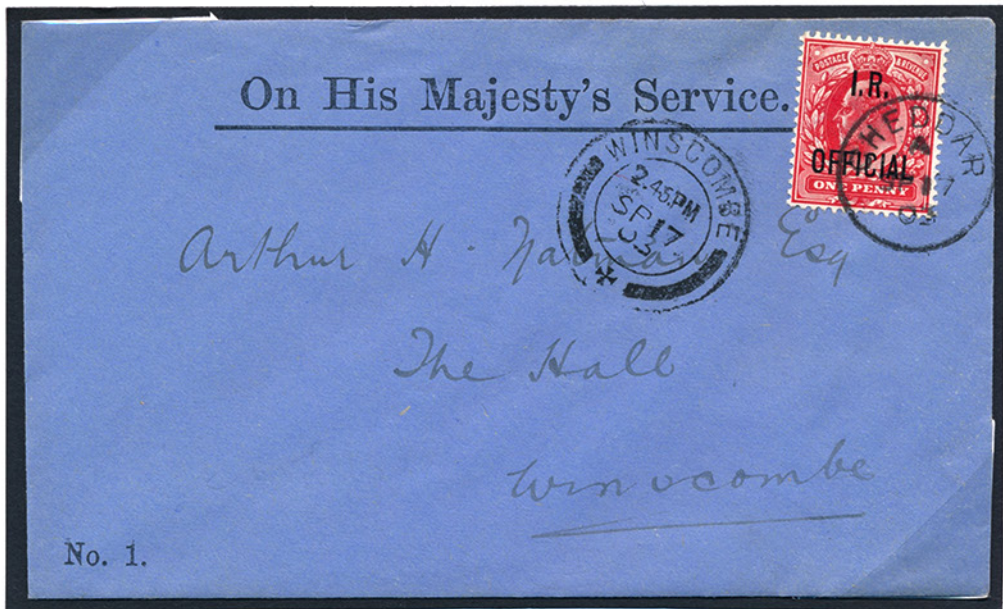


INTERIOR VIEW OF W. S. LINCOLN'S PREMISES, 2, HOLLES STREET, OXFORD STREET, LONDON, W.
THE LARGEST STAMP SHOP IN THE WORLD.

1920

82. SG 183 10/- ultramarine. Perfectly centred. Wonderfully rich colour. A pristine HASTINGS CDS. **£425**
83. SG 183 10/- ultramarine. With a lovely crisp and complete WEST STRAND steel CDS. A superb example. **£375**
84. SG 194 6d. Perfectly centred. Superb colour. A crisp WIRKSWORTH steel CDS. **£95**
85. SG 207a 5d. A quite lovely strip of 3. With pin sharp GREENOCK steel CDSs. **£55**
86. SG 209 9d with a crisp SOUTHPORT steel CDS. Very fine **£30**
87. SG 260 2/6d. A razor sharp LONDON WESTERN DISTRICT OFFICE steel CDS and part of another. Crisp and upright. **£70**
88. SG 266 £1 Dull – blue green. Perfect colour and freshness and a loight upright steel CDS. An outstanding example. **£425**
89. SG 267a 1/2d ST ANDREWS CROSS. A very fine CDS pair with watermark inverted. Lovely. **£240**





98



99



85



87



88



86



90



89



100



92



91



93



94



96



95

In the fifteenth century, in order to send a letter, people had to find their own means. There were the regular 'common carriers' of goods, and sometimes a traveller, or maybe a soldier going in the right direction, might be found who could be relied on to deliver the letter unless of course it was possible to send ones own servant. It seems messengers were usually paid before setting out, but references to payments are scanty. The Church too, had a postal system which had developed from earlist times, as well as the Universities, whose messengers went from one city to another throughout the land.

90. SG 275a 1d ANILINE ROSE. Tied to piece by a choice BIRMINGHAM CDS. With dazzling colour. £110
91. SG 314 1/- green & carmine. A superb corner of sheet block of 4. 3 adhesive untouched mint unmounted. **£350**
92. SG 400 2/6d. A superb mounted mint example lovely colour and freshness. **£140**
93. SG 401 5/- with a crisp, upright GUERNSEY steel CDS. **£110**
94. SG 410 5/- pale carmine worn plate. A lovely example with a crisp and upright FIELD POST OFFICE CDS. A superb example. £225
95. SG 412 10/- blue. A lovely example. A light and crisp DURRINGTON CAMP, SALISBURY CDS. Very fine. £385

THE EARLY POSTS.

In the fifteenth century, in order to send a letter, people had to find their own means. There were the regular 'common carriers' of goods, and sometimes a traveller, or maybe a soldier going in the right direction, might be found who could be relied on to deliver the letter; unless of course it was possible to send ones own servant. It seems messengers were usually paid before setting out, but references to payments are scanty. The Church, too, had a postal system which had developed from the earliest times, as well as the Universities, whose messengers went from one city to another throughout the land.

96. SG 441 1 1/2d. A pretty corner of sheet pair. Showing control number and plate number. Crisp steel CDSs. **£30**
97. SG 021 1d IR Official. On a lovely uncreased OHMS envelope. Tied by a clear CHEDDAR CDS. A WINSCOMBE CDS alongside. Very fine. £85
98. SG 039 2 1/2d OW Official. With a lovely light corner CDS. A very fine example. £285
99. SG 050 6d ARMY OFFICIAL. A fine CDS example. **£45**
100. SG 0105 2 1/2d ADMIRALTY OFFICIAL. SUPERB MINT. A clean, bright and fresh MM example. **£250**

The Human Express Packet

It is not generally known that it is possible for a person to post himself. Under the Exceptional Express service a regulation first made its appearance in the Post Office Guide of 1905, to the effect that 'Postmaster may arrange for the conduct of a person to an address by an express messenger'. The object of the regulation is to help strangers to find their way in a district with which they may be unfamiliar. The first man to make use of this service was Mr Henry Turner, of Guernsey, who on the morning of July 5 1905 presented himself at the Smith Street office and demanded to be expressed to the Post Office at Sark. He paid a fee of 5s 10d, and was handed into the care of an express messenger named William Gurney who was provided with a stamped form instructing him to deliver Mr Turner to the Sark office and bring back a receipt. The lad took charge of Mr Turner conducting him to the pier where they boarded a steamer. During the crossing while Mr Turner strolled up and down the deck, the express messenger followed him closely all the time, never allowing him to get beyond arms length away. On arriving at Sark, the human express packet was guided straight to the Post Office and was delivered to the Postmaster, which receipted the messenger stamped form to show that he had carried out his task according to the regulations. Later another member of the public went one better than this in an effect to find out just how much the Post Office would do, he posted himself on a bicycle and was accepted as a postal packet.

