



# JOHN LAMONBY

FINE BRITISH & EMPIRE ADHESIVES



211 Old Castle Street, Portchester  
Hampshire, PO16 9QW

E-mail: LAMONBY@AOL.COM

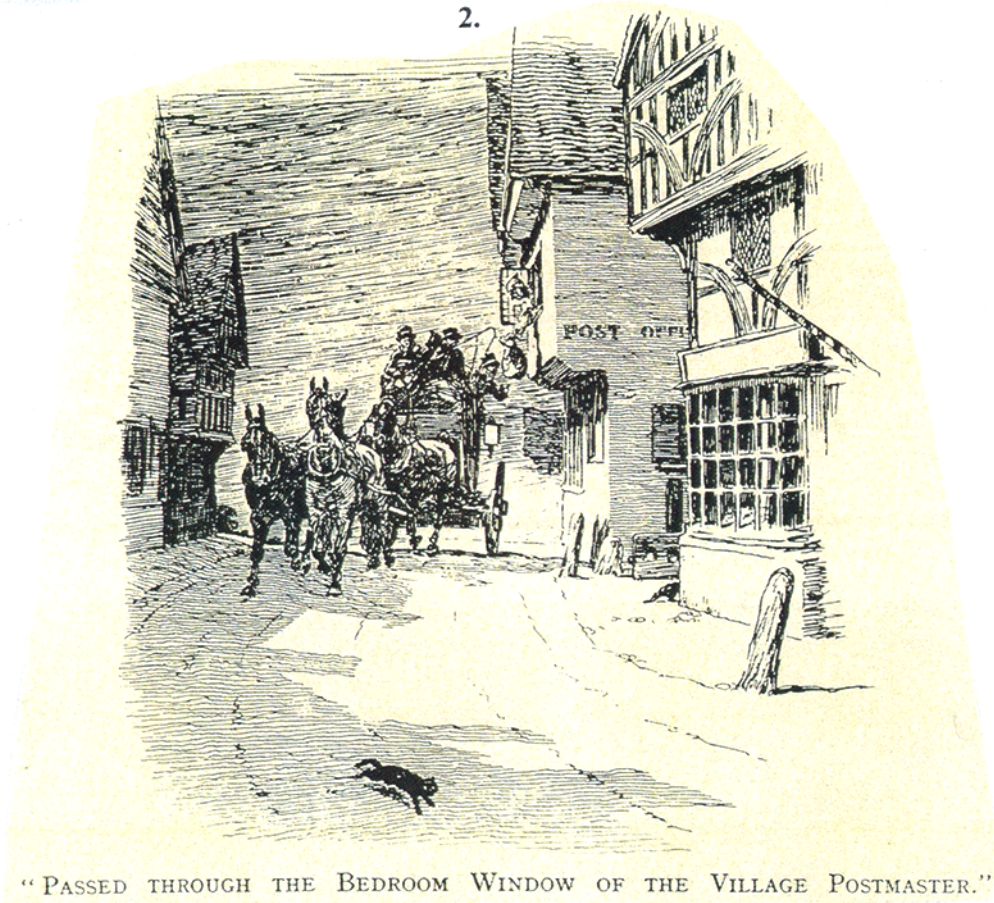
02392 378035 24 HR ANSWERPHONE  
02392 201096 FACSIMILE

## A PLEASING LITTLE SELECTION.



### A few nice items that I hope might tempt.

1. 1d Black plate 1b. Lettered JJ. With good-large margins and tied to piece by a crisp Maltese cross in black. Very attractive. £325
2. 1d Grey Black plate 1b. Lettered QF with excellent margins and a very choice strike of the Maltese cross in red. **£325**
3. BLACK PLATE 1b IN RED-BROWN. Lettered FF. AN OUTSTANDING EXAMPLE with excellent margins and a full and upright Maltese cross. EXCEPTIONAL QUALITY. £275
4. 1d Black plate 2 on wrapper from Appleby to Kirkby Lonsdale. The adhesive lettered PK and tied by a red Maltese cross. Excellent margins cut good-LARGE. Reverse flap with two APPLEBY CDSs for NOV 11 1840. Fine and uncreased. £375
5. Black plate 2 in Red-Brown. Lettered PL. With good-large margins and half a light Maltese cross. **£165**
6. 1d BLACK PLATE 3. A FABULOUS SINGLE lettered MA. A stunning strike of a Maltese cross in red. In all respects exceptional. £525
7. 1840 1d Grey Black plate 4. Lettered HA and part sheet marginal. Wonderfully cut with a featherlight Maltese cross in red. An exceptional adhesive. £450



“PASSED THROUGH THE BEDROOM WINDOW OF THE VILLAGE POSTMASTER.”

8. 1d Black plate 4. A beautiful example lettered OA. Wonderful margins and a crisp Maltese cross in orange-red. **£375**
9. Black plate 5 in Red-Brown. Lettered CK. Margins cut good-large and a crisp upright Maltese cross. **£120**
10. Plate 6. 1d Intense Black. Lettered CC with margins cut good-large-ENORMOUS and a vivid orange-red Maltese cross. A wonderful adhesive. **£375**
11. 1d Black plate 8 in Red-Brown. A super example lettered HH. With good-large margins and a crisp upright Maltese cross. **£80**
12. 1d Black plate 9. A lovely example lettered ID. Very well cut margins and a crisp black Maltese cross. **£425**
13. 1d Black plate 9. Lettered KC showing horizontal guide line through value and K square. Perfectly cut and a complete and upright Maltese cross in black. **£425**
14. PLATE TEN. A GIANT OF A STAMP. Lettered QA with large-ENORMOUS margins and a light, complete Maltese cross in black. A perfectly clear 'O' flaw and excellent vertical guide line in North East square. In all respects exceptional. **£725**
15. PLATE 10. 1d Black lettered LL. With good-large-ENORMOUS margins and a crisp, upright and complete Maltese cross in black. Exceptional. **£485**
16. PLATE 10. 1d in Black Red Brown. Matched lettering MD. Both adhesives are very choice and well cut. Outstanding strikes of the Maltese cross. An exceptional matched pair. **£575**
17. Black plate 10 in Red-Brown. Lettered AF. Superb margins. Part sheet marginal at top. A lovely full Maltese cross. **£115**

3.



2



3



1



5



6



7



8



4



9



10



11



12



13



14



15



17



16



18



19



20



21



24



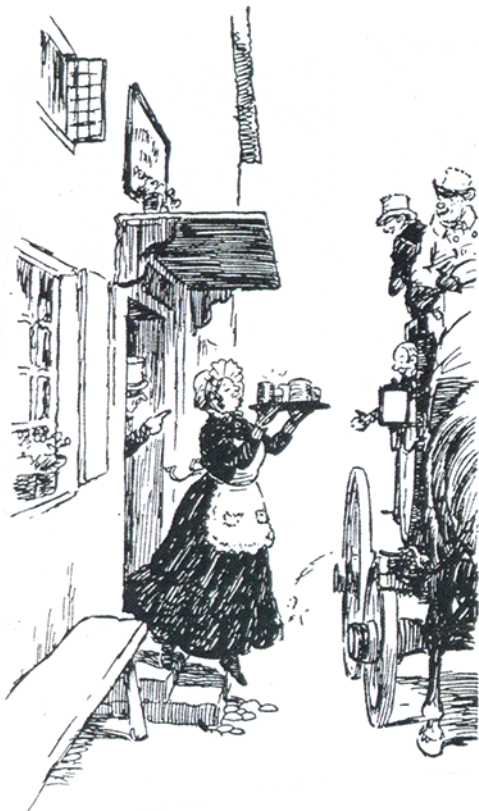
22



23

Explosive Manchester Pillar Box. 11<sup>th</sup> March 1858.

I beg to submit a report from the police office in this city by which it will be seen that at 2.30am this day a quantity of gas was found to have escaped from the main pipes into the Handing Ditch Pillar Box, that the policemen on duty, who detected its presence, imprudently approached the pillar box with its lighted lamp, and caused the gas to explode with great violence, the roof of the pillar having been blown away – a portion of it being thrown a distance of a 100 yards – and the officer himself injured about the head and eyes... It will be necessary to remove the pillar in order to make the requisite repairs, and to permit an examination of the gas pipes which it is believed the pillars base has in some way injured.



**FORTUNE IN,  
STAMPS WERE  
IN OLD BOX**

**T**WO men brought to a Strand stamp dealer yesterday an old cardboard box containing some crumpled stamps.

They said the stamps belonged to a titled lady who wished to remain anonymous and who wondered if they were worth anything.

When Mr. J. Webb, the manager, looked through the box he found a block of nine unused 10s. stamps of King Edward VII. overprinted "I.R. Official"—a valuable British issue of great rarity.

Mr. Guy Harmer, the stamp expert, had a photograph of the only 10s. "I.R. Official" stamp which they had ever sold.

"That one alone fetched £950," he said. "These are very badly creased and without gum, but undoubtedly the strip will be worth four figures when it is put up for auction."

1948

18. RUBY MALTESE CROSS. Two light and upright strikes in 1840 2d BLUE plate 1. A PAIR lettered QE-QF. EXCEPTIONALLY CHOICE VERY WELL CUT and without any blemish. MOST RARE AND STRIKING. A BPA certificate accompanies. **£3800**
19. 1840 2d PALE BLUE from plate 1. Lettered ID. With perfect margins and a lovely light and upright Maltese cross struck in black. **£450**
20. 1840 2d Blue plate 1. Lettered AG. Perfectly cut with a crisp, light and upright Maltese cross in orange-red. Superb appearance. **£450**
21. 1840 2d Pale Blue plate 1. Lettered SA. A lovely delicate shade. 4 perfect margins and the lightest possible Maltese cross in red. Full and upright. **£450**
22. 1840 2d Pale Blue plate 1. Lettered CC with perfect margins and an upright strike of a Maltese cross in red. **£375**
23. 1840 2d Blue plate 1 lettered EC. With full margins and a crisp partial Maltese cross in black. **£325**
24. 'HANDSWORTH PENNY POST' in blue. A full, upright strike on 1843 1d plate 32 in combination with a Maltese cross tied to small piece. Lettered DL with 4 excellent margins. Outstanding piece. A Jackson certificate accompanies. **£425**
25. 1841 1d Red-Brown plate 33. A stunning single. Enormous margins and a lovely Maltese cross. Make room! **£85**
26. 1841 1d Red-Brown. A most attractive BLOCK OF FOUR with wonderfully struck Maltese crosses. Margins just barely touched to large. Creasing unseen at face. A very striking multiple. **£110**
27. NUMBER 4 IN MALTESE CROSS ON CREASED ENTIRE WRAPPER to KENDAL. Fine full margins and neatly tied. A superb KENDAL CDS reverse flap in blue for April 6 1843. Rare quality here. **£625**



25



26



27



32



28



29



31



30



33



34



35



40

#### Longest and Largest

The longest Public Post Office Counter in the United Kingdom is in the Trafalgar Square branch office, London WC2. It is 185 ft (56.4 m) long, with 33 positions and is open 24 hours a day, seven days a week including public holidays. It was opened in 1962. The largest sorting office in the United Kingdom is in Birmingham and occupies an area of 17½ acres and handles 3,500,000 items of mail every day.

Letter Boxes - and paint

Pillar boxes are repainted at regular intervals. It does not matter whether they are in London or at Lands End or John O'Groats, they are all painted exactly the same shade of red. This is because after many tests Post Office experts have made a special kind of paint for the boxes. One of the tests was to pour water on to the paint for an hour and then to play a powerful beam of light on it. That gave the same results as if the paint had been out in the rain and sunshine for a whole year. The painters are told how to make the paint and from which firms they are to buy the materials. So all the paint is of the same quality and the same colour. It dries hard within twenty minutes of being put on so people are unlikely to spoil their clothes by coming into contact with it. And it is why you will so rarely find a pillar box out of action with the notice against it "WET PAINT".

28. Number 9 in Maltese cross on 1841 1d red-brown. Lettered EB. With excellent margins and an upright strike. **£70**
29. RED-BROWN SCOTTISH NUMERAL on 1850 1d lettered PC. Just into top corner. Tiny corner crease but a very fine cancel. More red than brown. **£65**
30. AN IRISH DIAMOND IN BLUE. A superb strike of the 317 numeral on MACROON in Cork on a choice 1844 1d lettered CK. Beautifully cut. Very fine. **£110**
31. A CLEAR BLUE NUMERAL on 1850s 1d Red Brown SG 8. Lettered IB. 4 choice margins and tied to piece by a numeral cancel in bright shade of blue. **£120**
32. SG 8a 1d red Brown plate 132 on deep blued paper. Lettered BI. With HUGE-GIGANTIC margins tied to envelope to Hackney by a 635 numeral of Reading. Superb blue Reading CDS and red receivers CDS on reverse together with a very fine intact wax seal in brown. **£70**
33. SG 14 1841 2d Blue plate 3. SUPERB MINT. Lettered TC. Wonderfully cut with a clean reverse and large part original gum. EXCEPTIONALLY FRESH. Magnificent appearance. **£900**
34. 1841 2d BLUE CANCELLED IN RED. A superb example lettered JC. From plate 4 with full margins cut good-HUGE. A corner Irish Diamond cancel in dull red. Only a handful of this variety have been recorded. A Brandon certificate accompanies. A great line engraved rarity. **£2400**
35. SG C6 1d. A 'DUMB' LONDON DISTRICT DUPLEX. Most unusual and not seen by me before. **£60**
36. SG 23 2d plate 4. A crisp 338 numeral of HARROWGATE. A lovely fresh example. **£70**
37. SG 36 1d plate 58. A very scarce plate. A superb example lettered DG with a crisp steel CDS. A Royal certificate accompanies. **£325**
38. SG 36a 2d blue plate 6. A lovely single with a featherlight numeral cancel. **£140**
39. LATE USAGE OF SG 38 1d. A very fine upright NEWCASTLE-ON-TYNE CDS for JUNE 22 1897. **£80**

POST OFFICE GUIDE 1936.Packing regulations for certain items. EGGS.

*The safe transit of eggs through the post office cannot be guaranteed but the following method of packing is recommended, use a wooden or other ridged box with the suitable partitions and a well fitting lid, wrap each egg separately in newspaper or other soft material, place the eggs on the end, put each one in a separate partition and fill up the vacant spaces in the box with cotton waste mark the parcel 'EGGS'.*



36



37



38



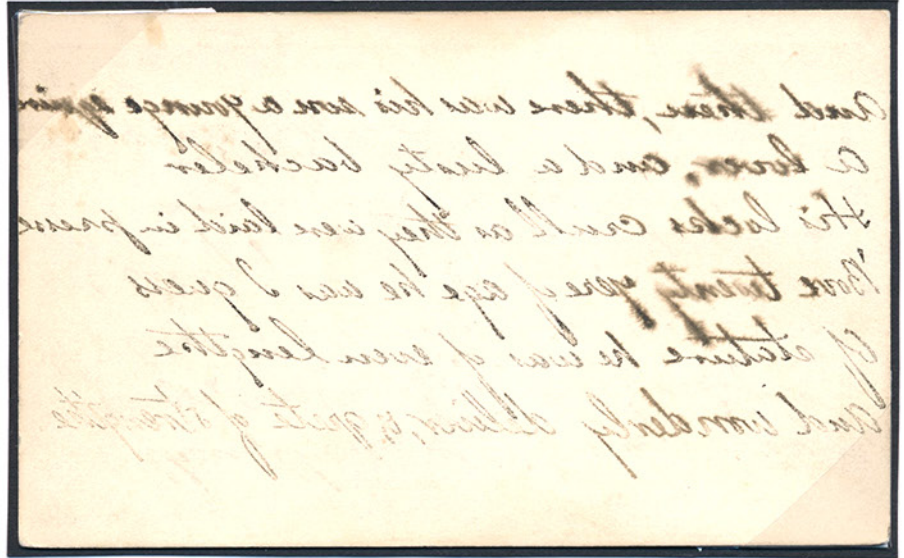
39



42



43



48



44



45



41



46



47



51



52



49



53



54



55



57



56



58



62



## CAUTION to POST-BOYS.

**B**Y the Act of 5th of *Geo. III.* If any Post-Boy, or Rider, having taken any of His Majesty's Mails, or Bags of Letters, under his Care, to convey to the next Post Town or Stage, shall suffer any other Person (except a Guard to ride on the Horse or Carriage, or shall Loiter on the Road, and wilfully mispend his Time, so as to retard the Arrival of the said Mails, or Bags of Letters, at the next Post Town or Stage.—Every such Offender shall, on Conviction before One Justice, be committed to the House of Correction, and confined to hard Labour for one Month. All Post-Boys and Riders are therefore desired to take Notice of this, and are hereby cautioned not to fail in the regular Performance of their Duty, otherwise they will most assuredly be punished as the Law directs. And it is hoped and requested, for the Benefit of public Correspondence, that all Persons, who may observe any Post-Boy or Rider, offending as aforesaid, will give immediate Notice to — *John William*  
Surveyor of the General Post-Office, (About 1792)

A Cautionary Note. 18th c.

40. SG 40 1d tied to small envelope by a Birmingham spoon. Endorsed 'STAMPED'. Reverse a green EDGBASTON undated CDS and a grey Coleshill CDS for Oct 2 1857. **£50**
41. SG 43 1d plate 76. A side marginal mint block of 4. One adhesive with light hinge trace. Fine inscriptional detail. **£120**
42. SG 43 1d plate 95. An outstanding open town KINGSTOWN steel CDS. Lovely and clear. **£40**
43. SG 43 1d plate 151. A fine BLOCK OF SIX struck, contrary to regulations with three crisp HULL steel CDSs. **£240**
44. SG 43 1d plate 164. Pristine unmounted with side margin showing part inscriptional detail. **£65**
45. A BLUE CDS. SG 45 2d plate 9. Cancelled by a crisp dated CDS in blue — which I have never seen before. Most unusual. **£90**
46. SG 47 2d Dee Blue plate 15. A choice MINT UNMOUNTED adhesive. Quite lovely. **£350**



50



59



60



63



64



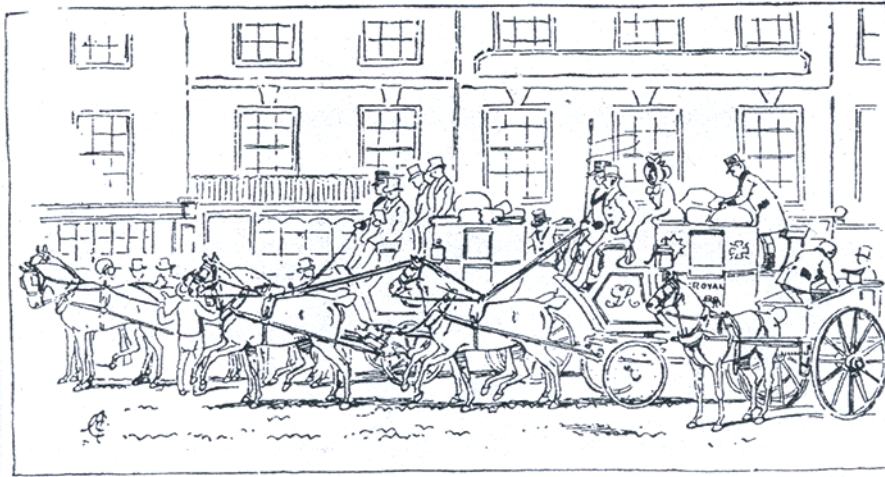
61



65



66



A WEST COUNTRY MAIL-COACH AND CART STARTING FROM  
PICCADILLY, 1828.

47. PLATE 20. SG 48 1/2d. Pristine well centred and UNMOUNTED MINT. Imperf at right with margin showing inscriptional detail. Lovely quality. £180
48. MIRROR WRITING. 1877 on reverse of a ½ pre paid post card with Birmingham CDs and numerals. The writing described a 'lust bachelor' with fair hair. Young and of good stature. Most unusual! £45
49. SG 76 3d BRIGHT CARMINR-ROSE. A VERY CHOICE SUPERB MINT SINGLE with sheet margin attached. Flawlessly centred with barest hinge trace – almost unmounted. VERY RARE IN SUCH QUALITY. £1450
50. SG 76 3d Bright Carmine-Rose. A PAIR on wrapper to LYON. Cancelled and tied by London district duplexes. PD in red and 'Angl' CDS. Reverse flap three others usual folds clear of adhesive. Some reverse soils but RARE ON COVER. £165
51. SG 95 4d DEEP VERMILION. Plate 11. SUPERB MINT UNMOUNTED. A dazzling adhesive. MOST RARE. £450
52. SG 93 4d plate 13. Very well centred. A light, upright LONDON E.C steel CDS. Very fine. £70
53. SG 102 3d Deep Rose plate 7. Wonderful colour. A NEW-MILLS steel CDS perfectly struck. £95
54. SG 109 6d plate 9. Very fine with crisp INVERNESS thimble CDS. £45
55. SG 110 9d STRAW. With a superb FENCHURCH ST steel CDS perfectly struck. £140
56. SG 117 1/- plate 5. With SEETHING LANE CDSs and sheet margin showing inscriptional "4 SHILLINGS PER ROW OF 4". £40
57. SG 122b. 6d plate 11. With a full DELVIN steel CDS. A lovely strike. £55
58. SG 123 6d Pale Buff plate 11 perfectly centred with a crisp, complete STAPLEFORD steel CDS. £90
59. SG 134 5/- ROSE plate 4. Very choice with a very light duplex cancel. The colour is wonderful. Superb quality. £675
60. SG 135 10/- GREENISH-GREY. WHITE PAPER. An amazing single. Perfectly centred. Wonderful colour and a central, complete and upright BRADFORD YORKS steel CDS. Perfection itself and a Royal certificate accompanies. Finest quality here. £3200



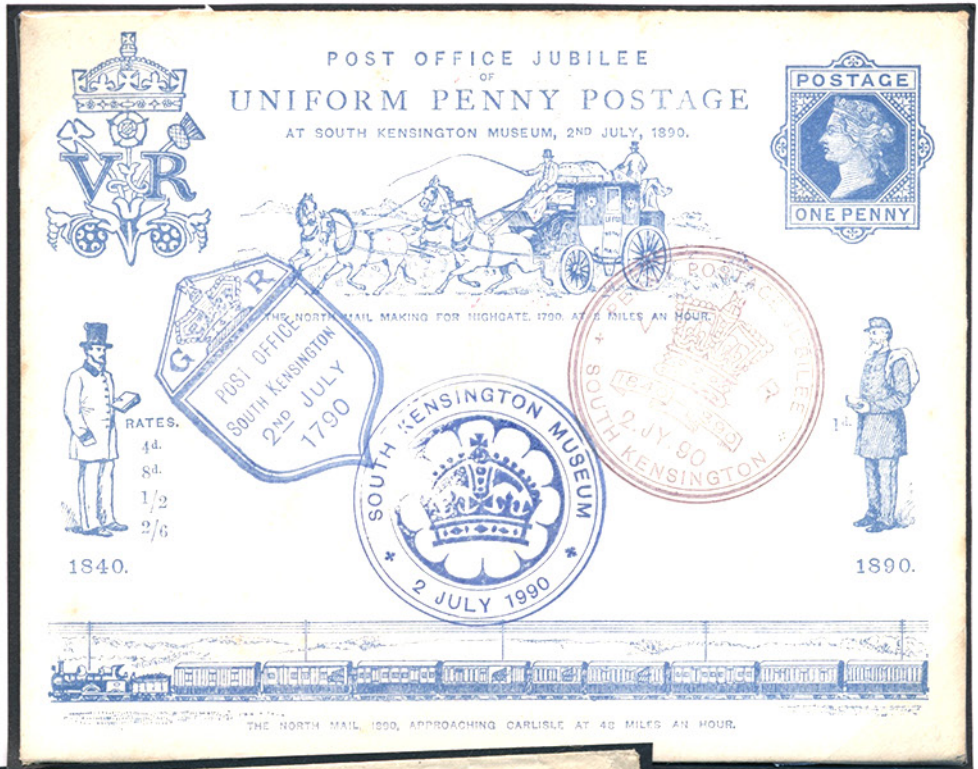
67



68



69



76



70



71

77



72



79



The Postmistress of Watford despatching the Mail. 1820

Hand Gumming Stamps.

In the early days, gum was applied by hand. When this is done it is usually painted on with a brush, very much as you would apply paste to wallpaper. Hand gummed stamps generally show the gum to be unevenly applied and streaky, frequently the brush strokes are visible. In some instances hairs from the brush may still be seen in gum. After a sheet of stamps was gummed by hand it was hung up to dry before going on to the next step in production.

61. SG 138 2 1/2d Rose Mauve plate 2 on blued paper. With a part MALTA CDS and A25 numeral. A lovely example and a Brandon certificate accompanies. **£850**
62. SG 141 2 1/2d plate 4. With a crisp, upright LONDON S.E steel CDS. Finest quality. **£110**
63. USED IN ST MALO. SG 141 2 1/2d plate 6. A lovely, crisp and upright CDS. **£70**
64. SG 141 2 1/2d plate 17. Superb mint. CAT £1700. A lovely fresh MM single. Outstanding colour. The key plate. **£375**
65. SG 143 3d plate 19. VFU with a crisp corner IPSWICH steel CDS. **£55**
66. SG 147 6d Grey plate 16. With a crisp, upright and complete LONDON steel CDS. **£65**
67. CONTINENTAL NIGHT MAIL. SG 157 2 1/2d plate 22. A corner CDS clear of Queens features. **£40**
68. SG 159 3d on 3d. A quite lovely example with a crisp complete and upright GLASGOW steel CDS. **£110**
69. SG 161 6d plate 17 with a crisp, upright BRIGHTON steel CDS. **£65**
70. SG 162 6d on 6d. Superb mint. Flawlessly centred. Wonderfully bright colours and lightest hinge remains. **£250**
71. SG 169 5d INDIGO. VFU half a crisp LONDON steel CDS. RPS certificate. **£95**
72. SG 178 2/6d. A fabulous PORT-GLASGOW steel CDS. Perfection. **£180**
73. SG 178 2/6d. A pin sharp SOUTH SHIELDS steel CDS. **£80**
74. SG 180 5/- with a choice MARYPORT steel CDS. Wonderful quality. **£150**
75. SG 183 10/- Ultramarine. Perfectly centred. Wonderfully rich colour. A pristine HASTINGS CDS. **£425**
76. 1890 UNIFORM PENNY POST JUBILEE ENVELOPE AND INSERT. The envelope bearing ALL FIVE COMMEMORATIVES POSTMARKS. Three on front and two on reverse, these are the different TUBE POST cancels in pink. Excellent condition. All 5 are perfectly struck. **£185**



78



79



74



83



75



88



84



80



81



90



91



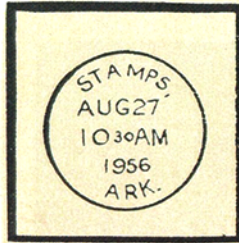
82



86

FROM POSTBOY TO AIRMAIL.

A girl was sent to the bank with a pass book and cash to pay in. She had never seen a pillar-box before, save in miniature form. One of the latter she possessed, into which she placed all her savings. When her mistress asked for the pass book she explained that she had put it with the money in the bank. "But who did you see?" asked the bewildered mistress. "I didn't see anyone, though I looked for a long time through the slit".



#### Stamps 14.

Stamps, Lafayette county, Arkansas, U.S.A., was so named in the latter part of 1884 by Mrs. C. T. Crowell, the first postmistress, in honour of her father, James Hardy Stamps, an early settler in the region.

It is now principally a manufacturing town with some farming and considerable oil production. Population: 2,500.

77. Taunton to Punjab India redirected Murree SG 190 pair 5d. An 1884 envelope sent from TAUNTON JY 24<sup>th</sup> franked with a pair of SG 190 2 1/2d Dull Lilacs (AE-AF) tied by the Taunton squared circle, sent to a Lt Colonel, 2<sup>nd</sup> regiment of Punjab Cavalry, Punjab, Indian redirected Murree endorsed via Brindisi, Sea post office handstamp 31<sup>st</sup> JUL, redirected cachet, Dera Ismail 15<sup>th</sup> AUG and Murree AU 19<sup>th</sup> arrival. Lightly used and excellent colour to adhesives. **£90**
78. SG 196 1/-. With outstanding colour and a crisp LANCASTER steel CDS. A lovely end to the set. **£180**

#### The Oldest Post Office

The oldest post office in the United Kingdom, still in its original building is at Sanguhar, Dumfries, Galloway. The post office is unique in having occupied the same house since its incension in 1763, a fact which was officially recognised in a pictorial postmark 1974. The Sanguhar is often, though inaccurately, claimed to be the oldest post office in Britain. The post office, as an abstract term, has existed in many towns and cities since the mid 17th century.

79. 1899 STATIONARY ENVELOPE bearing pre paid 2d and 2 1/2d with additional Jubilee 1/2d and 2 1/2d to HAMBURG. Cancelled with Manchester CDSs with Hamburg arrival CDS on reverse. Very colourful. **£45**
80. CONTINENTAL NIGHT MAIL double ringed CDSs on SG 201 2 1/2d. An attractive block of 4. **£40**
81. SG 207 5d DIE 1. A FINE VERTICAL PAIR. Each a crisp TUNBRISGE WELLS steel CDS. Unusual in multiples. **£90**
82. SG 207a. 5d. A quite lovely strip of 3 with pin sharp GREENOCK steel CDSs. **£55**
83. FIRST DAY OF ISSUE. SG 219 1d with a crisp, upright LONDON CDS for JAN 1 1902. **£60**
84. SG 226 2d Grey-Green and Carmine. Tied to piece by a wonderful GEORGE STREET EDINBURGH steel CDS. **£40**
85. SG 245a 6d. A SUPERB SHEET MARGINAL GUTTER BLOCK OF 4. With three adhesives pristine mint unmounted. **£180**
86. SG 251a. 9d. With a crisp MAIDSTONE steel CDS. Perfectly struck. **£25**
87. SG 266. 2d Grey Green and Carmine Red. M11 (4). With a crisp LANGHOLM steel CDS. **£35**
88. SG 260 2/6d. With a crisp ST LEONARDS GREEN steel CDS. **£95**
89. SG 263 5/- Bright Carmine. Perfectly centred a complete and featherlight SUTTON steel CDS. **£95**
90. 1/2d DEEP BRIGHT GREEN. M3 (7). A particularly deep shade with a superb PORT ERIN steel CDS. Exceptional for this. **£120**



87



89



92



93



85



97



94



95



96



99



98



100



POST-BOYS WAITING FOR THE "NEXT PAIR OUT."

From post boy to airmail. G Gibbard Jackson

One day the postmaster of a country town determined to accompany an "OLD MOUNTED" Postman. The postmaster was a strict teetotaler. It should be said, "Three miles out the "three Horse Shoes" stood a distance back from the road. And although the driver tugged manfully at the reins, the pony turned off and came to a pause opposite the front door of the hostelry. The postmaster knew that the house was not in the postmans delivery and for a moment there was an awkward pause. The old chap saved the situation, however scrambling down and leading the pony to the drinking trough remarking "She'll never pass through this trough sir, and I always let her have her fill, for its uphill work from Newton.

91. SG 275a. 1d ANILINE ROSE. A lovely example with a crisp steel CDS. **£110**
92. SG 295 6d. A lovely, light steel CDS. Exceptional colour. **£55**
93. SG 401 5/- Rose-Carmine. With a featherlight steel CDS set well clear of Kings portrait. **£140**
94. SG 401 5/- with a crisp, upright GUERNSEY steel CDS. **£110**
95. SG 401 5/- Rose-Carmine. With lightly placed LONDON CHIEF OFFICE CDSs for 27 MAY 1914. **£85**
96. SG 412 10/- BLUE. A superb example. Crisp FLEET STREET steel CDSs. Lovely quality. **£425**
97. SG 413a 2/6d. A superb mint CORNER OF SHEET PAIR. Single hinge to top adhesive. Lower adhesive MINT UN MOUNTED. Dated 29/9/19 in pencil in margin. Very handsome. **£385**
98. SG 050 6d ARMY OFFICIAL. A post office perfect untouched mint unmounted BLOCK OF FOUR. A BPA certificate accompanies. **£625**
99. SG 044 2 1/2d ARMY OFFICIAL. A very fine BLOCK OF 4. Each adhesive a crisp steel CDS. **£110**
100. SG T13 5/- ROSE plate 1. A very choice example. A lovely crisp LEITH CDS for Dec 5 1877. **£135**