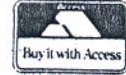




JOHN LAMONBY

FINE BRITISH & EMPIRE ADHESIVES



211 Old Castle Street, Portchester
Hampshire, PO16 9QW

E-mail: LAMONBY@AOL.COM

02392 378035 24 HR ANSWERPHONE
02392 201096 FACSIMILE

A PHILATELIC SWEET SHOP.



With lots of tempting items.

EXTENDED PAYMENTS. I am very happy to offer extended payments on any items you would like to add to your collection. In this way you can fill those gaps that would otherwise remain empty.

1. PLATE 1a. VERY WORN PLATE. A superb example of the latest printing showing excellent plate wear. Lettered NI with a crisp complete maltese cross in red and with margins wonderfully cut. OUTSTANDING QUALITY. £525
2. PLATE 1b with re – cut letters. Lettered IL. Margins cut good – ENORMOUS. A light, sharp and upright maltese cross in red. A STUNNING ADHESIVE. £475
3. 1d black plate 1b. A good – large margined example lettered NI tied to wrapper to Worcester by a red Maltese cross. When opened out the wrapper shows a bold watermark to the paper:- 'WHATMAN TURKEY MILL 1840'. Reverse a good BIRMINGHAM CDS for JAN 21 1841 in orange. The adhesive shows the listed variety:- N retouched. Fine and uncreased. £425
4. 1d intense black plate 2. Lettered FD. A fabulous single. A glorious cross in bright orange – red. £450



5. PLATE TWO 1d BLACK. A FABULOUS ADHESIVE. THE 'AD' RE-ENTRY. With margins good – ENORMOUS and a superb Maltese cross in orange – red. **£525**
6. 1d black plate 2. An outstanding single lettered IK. With good – ENOMROUS margins and a featherlight maltese cross in orange – red. Very choice. **£385**
7. 1d black plate 3. A FABULOUS SINGLE lettered MA. A stunning strike of a maltese cross in red. In all respects exceptional. **£525**
8. ORANGE MALTESE CROSS OF LIVERPOOL. 1840 1d black plate 4 tied to clean and uncreased wrapper to Glasgow by an orange Maltese cross. Revised flap shows a Liverpool CDS in the same colour together with a black Glasgow box for 22 Dec 1840. Very fine and rare. **£750**
9. 1d black plate 6. Lettered FL with large – HUGE margins and a crisp upright maltese cross in black. **£325**
10. PLATE 6. 1d black lettered IK. With large , even margins and a full , upright maltese cross in black. Very fine. **£375**
11. PLATE 8. THE ORIGINAL 'RL' RE-ENTRY. A superb example. All of the re – entry is clear of the crisp black maltese cross. With outstanding margins. A delight so fine. **£425**
12. PLATE ELEVEN. 1d grey – black. Lettered GA. With 4 perfect margins and a light maltese cross in black placed clear of the Queens face. A fine example of this the rarest of black plates. **£2200**

THE GHOSTLY PILLAR BOX

... Nor have letter boxes been spared the unwelcome attention of ghosts. For, as Parliament was gravely informed by the Postmaster General, in his annual report of 1876, no one could be found willing to undertake the task of emptying the wall letter box recently authorised for a village in the West of Ireland 'in consequence of a general belief among the poorer people in the neighbourhood that, at that particular spot, "a ghost went out nightly on parade". The ghost was said to be 'a large turkey without a head'.

3.



1



2



4



5



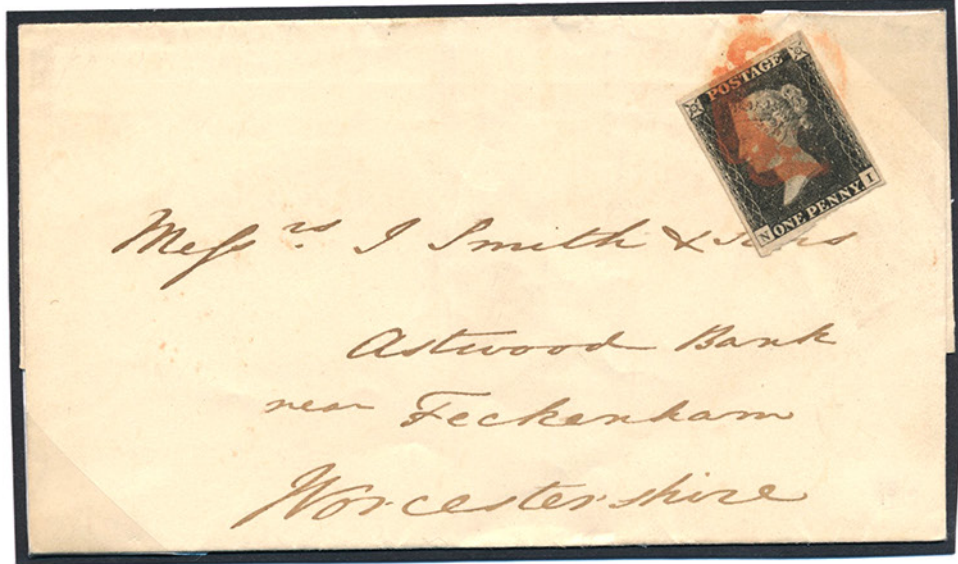
6



7



9



3



8



10



11

THE POSTAGE STAMP MICROBE. THE POSTAGE STAMP 1913.

We learn from a paragraph in a recent number of The Postage Stamp, that clever people on the other side of the Atlantic have discovered something, which we fondly hoped might prove to be the true Bacillus Philatelicus, with which obstinate Philastines might be dully inoculated with a view to their conversation. To our regret we find that it is nothing of the sort, it is not even the microbe that brings in fresh subscribers to our contemporary, but a disease germ which may (or let us hope not) infect Post Office counters and be absorbed by purchasers in licking their stamps. It appears that in the New York Post Office stamps are being delivered face downwards on the counter, for fear lest the gummy side should pick up some microbes, which scientists tell us are always going about seeking whom they may devour, and not roaring like lions to warn us of their presence. Perhaps a reasonable amount of carbolic acid added to the gum might prove an effective disinfectant - it might also lead people to moisten their stamps in some less perilous fashion. But what about the story that went the rounds of all the papers a few years ago, of the young lady whose business was the sticking of stamps upon envelopes, and who was never so well and so happy as when she licked a certain number of thousands of stamps per diem? It would seem that the Postage Stamp Microbe is not invariably an obnoxious beast, and if he (and tales concerning him) be taken with a sufficiency of salt he may even prove wholesome and nourishing.



POST OFFICE AT ST. MARTIN'S LE GRAND, 1829-1910.

13. BLACK PLATE ELEVEN. 1d red – brown. Lettered IL. Perfectly cut and a lovely Maltese cross. **£85**
14. 1840 2d blue plate 1. AN OUTSTANDING STRIP OF THREE GG – GI. With good – large – huge margins and crisp lightly placed maltese crosses in red. Multiples of this quality are very rare. A premium strip. **£1850**
15. 1840 2d blue plate 1. Lettered IB with good – large margins and a crisp complete maltese cross in orange – red. Very choice indeed. **£485**
16. 1840 2d pale blue plate 1. A lovely example lettered BA. Very well cut margins and a particularly lightly placed Maltese cross in red. **£450**
17. 1840 2d pale blue from plate 1. Lettered ID. With perfect margins and a lovely light and upright maltese cross struck in black. **£450**
18. 1840 2d STEEL BLUE PLATE 1. Lettered FA. Wonderfully cut. A crisp maltese cross in black. A superb example of this difficult shade. **£725**
19. 1841 1d red – brown. A most attractive block of four. With wonderfully struck maltese crosses. Margins just barely touched to large. Creasing unseen as face. A very striking multiple. **£110**
20. 1841 1d red – brown. SG 8. An unrivalled single. Part side marginal. Lettered IA. A wonderful Maltese cross. **£150**
21. A wonderful DUBLIN MALTESE CROSS. Superb strike on SG 8 1841 1d red brown lettered JH. Fine full margined. **£85**
22. Number 2 in maltese cross. On 1841 1d red – brown lettered IG. Full margins. A lovely upright strike. **£80**
23. NUMBER 4 IN MALTESE CROSS on 1841 1d lettered DF. With 4 perfect margins and a lovely clear strike. Reverse shows a wonderful IVORY HEAD. **£210**



12



14



13



15



16



17



18



20



21



19



22



23



24



25



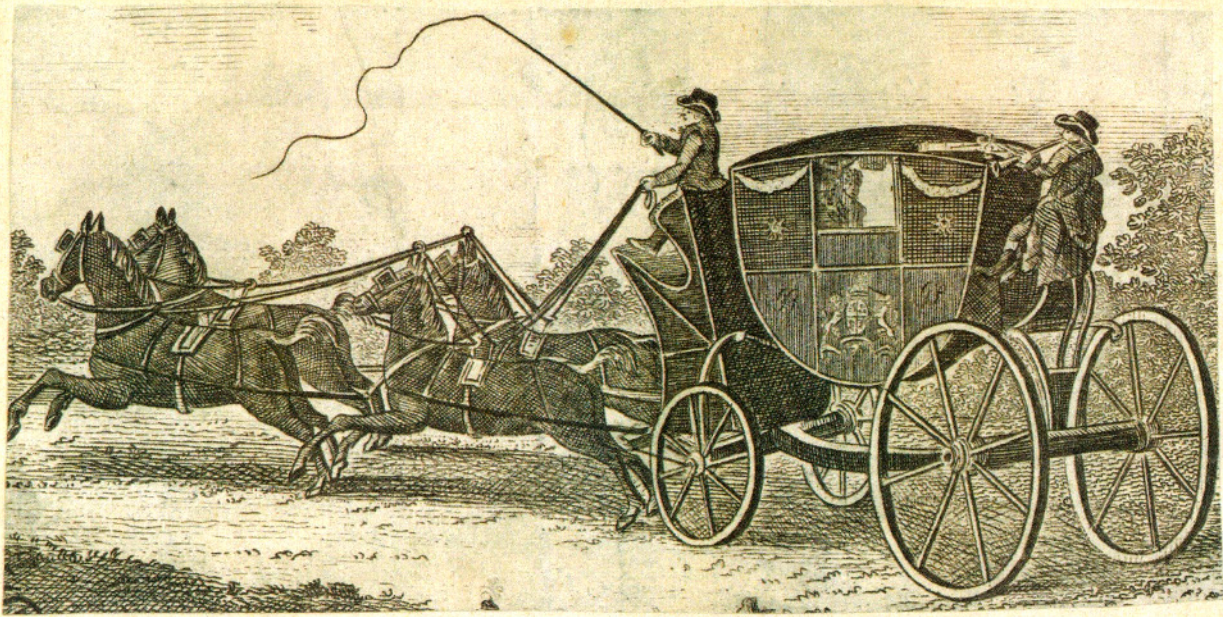
26



27

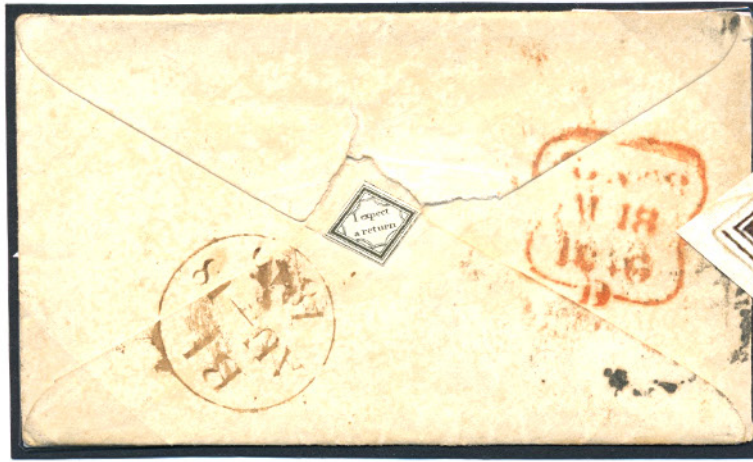


28



ROYAL MAIL.

24. NUMBER 10 IN MALTESE CROSS on 1841 1d lettered RB. With good – ENORMOUS margins and a superb strike of this difficult number. OUTSTANDING. **£240**
25. Number 10 in maltese cross. A fine clear strike on 1841 1d plate 3. Lettered CL with 4 excellent margins. **£140**
26. NUMBER 12 IN MALTESE CROSS. A lovely crisp strike on 1841 1d plate 36. Lettered BH with wonderfully cut margins. Super quality. **£200**
27. A PRISTINE BLUE 328 numeral of HADLEIGH on 1844 1d lettered EH> with perfect margins and a crisp, light, upright and complete strike. MAGNIFICENT QUALITY. **£200**
28. SG 8a 1d red – brown on deeply blued paper. A GIANT lettered AE. A lightly placed 888 numeral of Winchester. **£40**
29. NUMBER 12 IN MALTESE CROSS on 1841 2d blue plate 3. Lettered CB with perfect margins and a lovely strike light and crisp. **£175**
30. SG 14. 1841 2d blue plate 3. A delightful pair. Lettered BE – BF. With excellent generously cut margins and crisp upright maltese cross cancelations. **£200**
31. 1841 2d blue plate 3. Lettered BD. Lovely balanced margins. A light, crisp maltese cross. Very fine. **£110**
32. 1841 2d blue with a green numeral cancel. A magnificent example from plate 4 lettered EC with four margins cut large – HUGE and a lightly applied 387 numeral of Huddersfield in deep green. An exceptional adhesive and A GREAT RARITY. Originally from a strip of three and copy of a Brandon certificate accompanies. **£2200**
33. 'I EXPECT A RETURN'. 1846 envelope of small size to Blackfriars RD bearing 1844 1d with full margins. Reverse flap shows a seldom seen 'wafer seal'. An idea that isn't seem to catch on with the Victorians as these little seals are rarely seen. **£85**



33



32



29



31



30



35



36



34



37



38



39



40



41



42



43

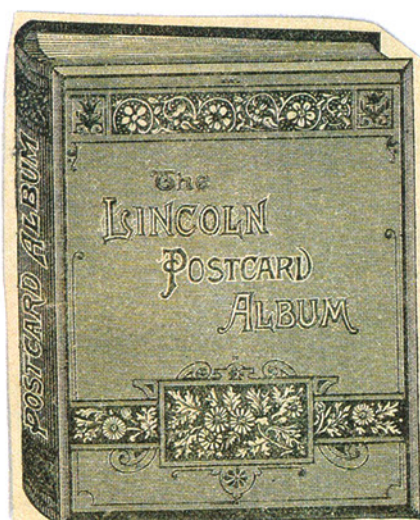
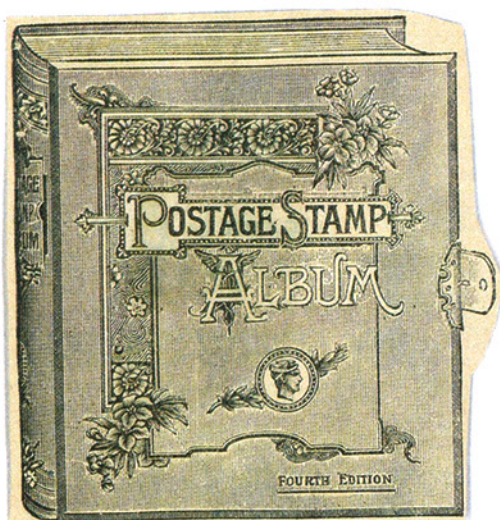


48

The undelivered postal packet.

Some postmasters take themselves and their duties very seriously, they Will even pursue a missing packet after it has been found. Application Had been made respecting a missing letter, and in the course of this Official inquiries the papers were referred to the postmaster at the Office of posting with a request for precise particulars of posting. Directly afterwards a communication was received from the sender saying That the letter inquired had been found. This communication was sent forthwith To the postmaster, who it was assumed would understand that The inquiry was at an end. But the postmaster was misjudged, he went On the case. He kept the case for about six weeks, trying to obtain From the exasperated sender particulars of the posting of the letter , Hen then returned the papers, confessing that he had been baffled and That the case was incomplete.

34. SG 17 1d plate R1. Tied to piece by a superb KILWINNING local box cancel. A wonderfully clear strike of this AYR local cancel. **£50**
35. SG 17 1d. A wonderful corner BIRMINGHAM steel CDS placed to give a clear profile. **£65**
36. SG 17 1d plate 23 with a super and upright DUNDEE steel CDS. Lovely quality. **£85**
37. SG 17 1d plate 32. With a lovely crisp steel CDS. **£75**
38. SG C6h INVERTED 'S' (SH) plate 5 with an outstanding UNDATED CUMBERLAND circular cancel. Exceptional. **£125**
39. SG 27 2d blue plate 5. With a crisp upright London District duplex. 47 being SOTUHWARK. **£175**
40. SG 29 1d red – brown. SUPERB MINT. Excellent centring, outstanding colour and freshness. Original gum and hinge remains. Very fine. **£160**
41. RESERVE PLATE 16. 1d with a very choice SOUTHAMPTON steel CDS. Finest quality. **£60**
42. SG 34 2d blue plate 5. With a crisp dated circular cancel. Very fine for this issue. **£70**
43. SG 36a 2d plate 6. A quite lovely example lettered OJ. With an upright and featherlight diamond duplex. **£160**
44. SG 38 1d. wonderfully centred. The lightest steel CDS. **£50**
45. LATE USEAGE OF SG 38 1d. A very fine upright NEWCASTLE – ON – TYNE CDS for JUNE 22 1897. **£80**





44



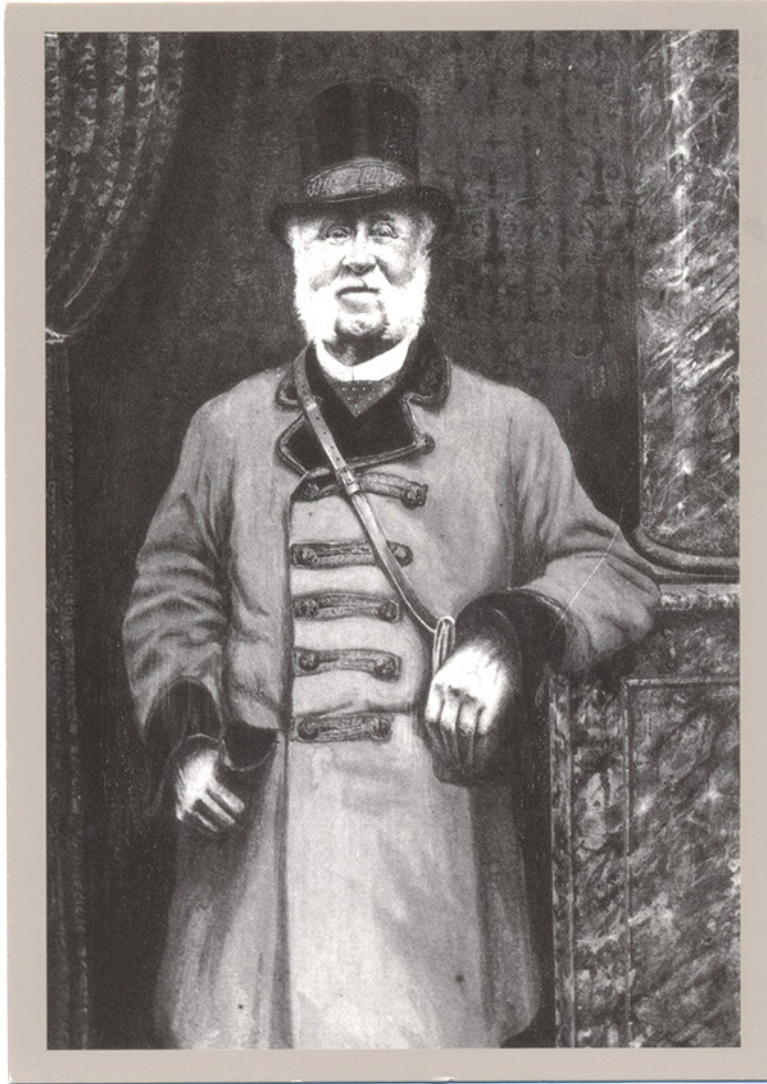
45



46



47



49



50



51



52



53



55



54



56



57



58



59



66



60



61

A tiring walk

One hot summer day a lone hiker was picking his way along a lonely path winding among heath-covered hills when he came upon a postman sitting in the bracken mopping his perspiring face. 'you look pretty tired out' observed the hiker. The postman pointed to a small lonely cottage away up on the hillside. 'I've just climbed all up there with a letter' he panted. "How follen of you" exclaimed the hiker, "you could have saved yourself all that trouble if you'd cared to spend threehapence by posting it".

GPO Crutchley.

Sometimes old age pension business is not so humerous. "Not long ago, just before Christmas," the postmaster tells us, "a pensioner came into the office and produced his pension book. On examination I found he had ten week spension due. I withdrew the orders and got him to sign them, obviously a laboured task. He then said he wanted postal orders for the full amount due. By this time the office was full of people and I was getting just a bit fed up, but when he wanted a registered envelope and asked me to address it for him and fill in the postal orders, I felt it was the last straw. When I saw the address to which he wanted me to send the registered letter, however, I quickly forgot my irritation towards the old man for any trouble he had given me. It was to the National Institute for the Blind, and I thought if he was good enough to send ten weeks pension to such a grand institution, any effort of mine to help him was small compared with his sacrifice.

46. SG 43 1d plate 95. An outstanding open town KINGSTOWN steel CDS. Lovely and clear. **£40**
47. CARLISLE SORTING TENDER. SG 43 1d plate 149. A lovely crisp cancel. **£40**
48. SG 43 1d plate 151. A fine block of six. Struck, contrary to regulations with three crisp HULL steel CDSs. **£240**
49. SG 43 1d plate 196. A very fine POOLEWE steel CDS. Outstanding quality. **£55**
50. A BLUE CDS. SG 45 2d plate 9. Cancelled by a crisp dated CDS in blue – which I have never seen before. Most unusual. **£90**
51. SG 47 2d plate 14. Very well centred. A lightly placed steel CDS. **£40**
52. SG 47 2d deep blue plate 14. With a crisp Glasgow steel CDS. Very fine. **£60**
53. SG 52 1 1/2d plate 1. Very well centred. A superb EDINBURGH NEWSPAPER BRANCE steel CDS **£110**
54. SG 53. 1 1/2d rose – red plate 1. RGE 'OP-PC' ERROR OF LETTERING. A very well centred example with half a POOL steel CDS and numeral cancel. A clear variety. A lovely adhesive. A period 1964 Royal certificate and DIENA certificate of the same year. Very fine for these. **£1100**
55. SG 51 1 1/2d plate 3. A pristine mint unmounted example. Lovely fresh quality here. **£250**
56. SG 80 4d pale red. A beautifully struck PAISLEY steel CDS. Rare quality for this early issue. **£180**
57. SG 103 3d plate 6. An outstanding PRINCESS STREET steel CDS. Crisp and light. **£70**
58. SG 102 3d deep rose plate 8. A crisp , upright WARRINGTON steel CDS. **£75**
59. SG 103 3d plate 9. VFU with a crisp LONDON CHIEF OFFICE CDS. **£65**
60. SG 103 3d plate 10. A pristine GLOUCESTER STEEL CDS. Crisp and complete. Very fine for this plate. **£110**
61. SG 117 1/- plate 5. A wonderfully struck KINROSS steel CDS. **£55**
62. SG 115 1/- deep green plate 6. With a super upright and complete SWAFFHAM CDS. **£55**
63. SG 117 1/- plate 6. A crisp 1469 telegraphic circle. With sheet margin attached. Showing 'ONE SHILLING PER LABEL'. **£50**
64. SG 117 1/- plate 6. An outstanding MANCHESTER Royal exchange steel CDS. **£50**
65. SG 122b. 6d plate 11. With a full DELVIN steel CDS. A lovely strike. **£55**
66. SG 135 10/- GREENISH – GREY. WHITE PAPER. An amazing single. Perfectly centred. Wonderful colour and a central, complete and upright Bradford Yorks steel CDS. Perfection itself and a Royal certificate accompanies. Finest quality here. **£3200**



62



64



63



65



67



68



69



70



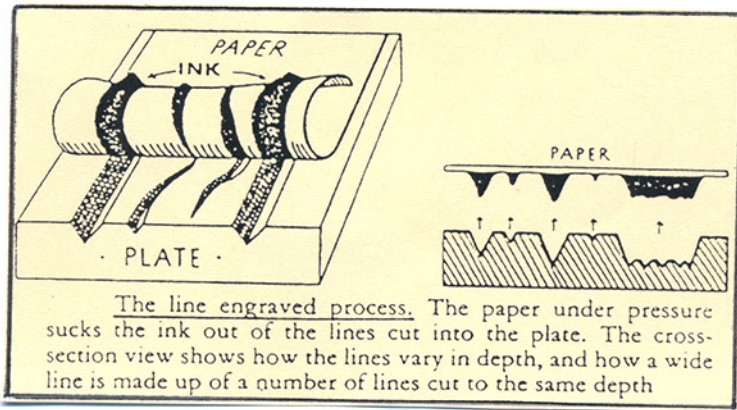
71



72



73

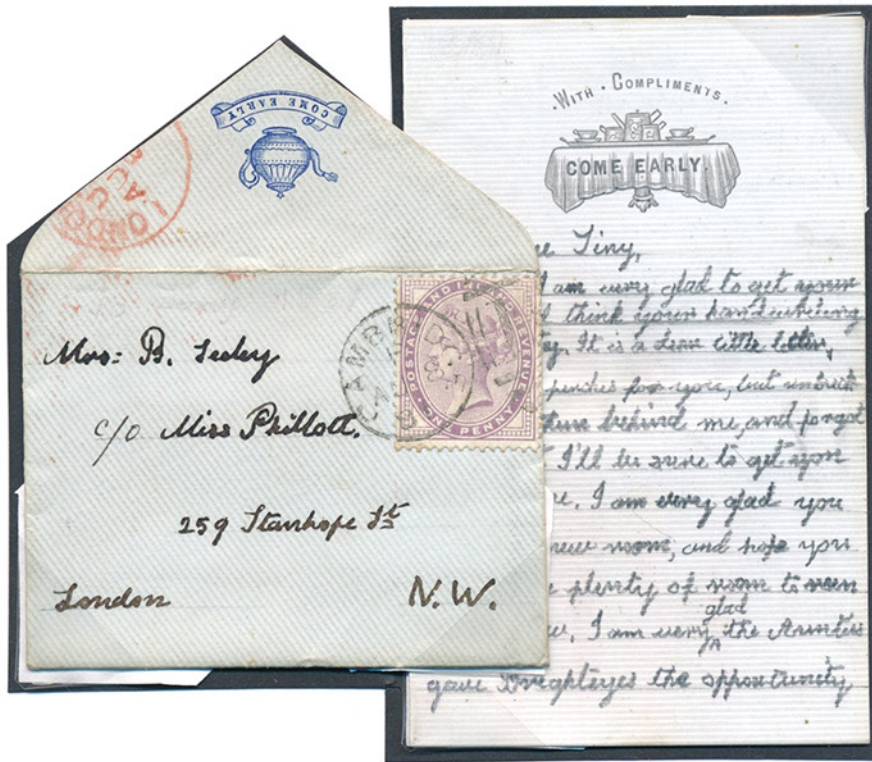


74





67. SG 139 2 1/2d rosy – mauve plate 1. Superb mint. A very choice very lightly hinged example. Wonderfully fresh. **£425**
68. SG 141 2 1/2d plate 16. A magnificent BEITH steel CDS. A stunning adhesive. **£110**
69. SG 147 6d plate 13. SUPERB MINT. Light hinge trace. Very fine indeed. **£250**
70. SG 147 6d plate 15. A very fine very well centred example. A crisp Liverpool steel CDS **£80**
71. SG 152 4d USED IN MALTA. Well centred. Lovely colour. A crisp complete A25 numeral. Lovely strike. **£145**
72. SG 156 8d orange. A superb LONDON steel CDS. Very fine indeed. **£220**
73. SG 160 1/- plate 17. A pin sharp KINGSBRIDGE steel CDS. Lovely and crisp **£60**
74. SG 163 1/- plate 13. With a lovely, crisp corner EDINBURGH steel CDS. **£115**
75. SG 167 1 1/2d. with a crisp upright BELFAST steel CDS. **£50**
76. SG 169 5d indigo. Pristine mint unmounted. Very well centred. A Lovely bright adhesive. **£525**
77. SG 169 5d indigo. VFU indeed. A crisp corner LOTHBURY steel CDS **£65**
78. 'COME EARLY' 1881 . a charming envelope of very small size from Cambridge to London bearing 1d lilac SG 172. Envelope flap:- A teapot and 'come early' in blue. Within a neatly written letter to 'Dear we tiny'. The writing underlined in pencil so it will be neat. Such a pretty thing. **£110**
79. USED IN ADEN. A clean and attractive envelope to Leeds bearing SG 172 1d tied by a fine ADEN CDS. PAQUEBOT alongside. A superb Leeds CDS for Sept 2 1901. Lovely quality. **£140**
80. SG 183 10/- ultramarine. Perfectly centred. A lovely single with a crisp Glasgow steel CDS **£350**
81. SG 194 6d with a choice and upright TAUNTON steel CDS. Outstanding. **£150**
82. SG 194 6d. Superb colour. Perfect centring . A light GUERNSEY steel CDS. **£140**
83. 1909. A most attractive envelope to Como bearing 1/2d X 3 & 1d. All tied by CORNWOOD steel CDSs. COMO CDS reverse flap. very tidy **£45**



78



79



76



80



81



82



77



85



86



83

Any Old Iron.

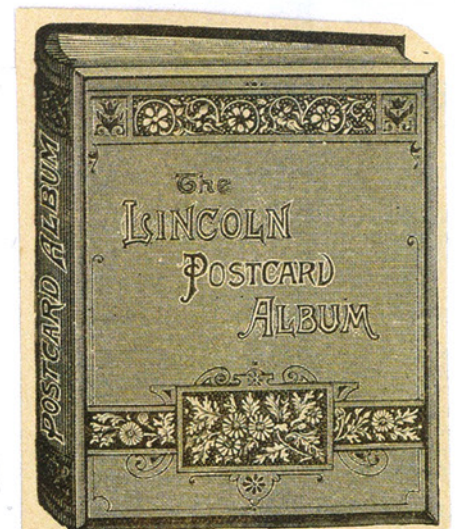
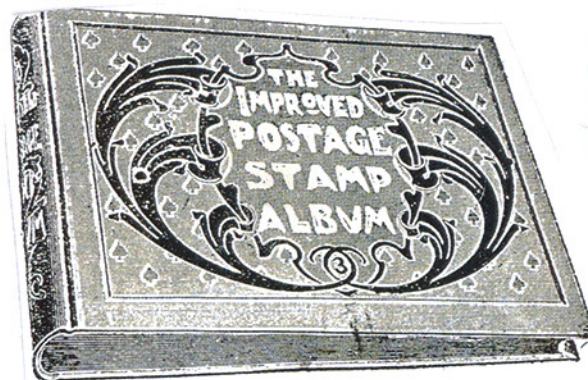
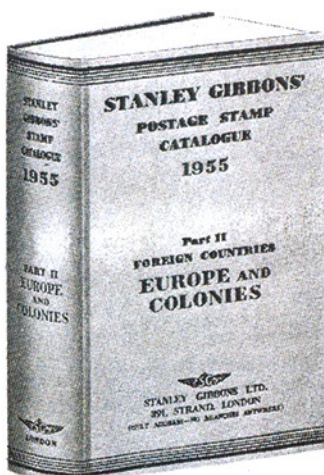
Age lends value, as well as charm, to many objects of the Victorian era. The classic Victorian pillar box was the hexagon shape with 'acorn' top designed by J Penfold, which model was standard from 1866-1879, seventy six of which are still in services. In 1966 the post office would sell obsolete Penfolds for their scrap value of £4 each. As the craze for collecting Victorian grew waiting lists of applicants for old pillar boxes were drawn up – and the price rose accordingly. By 1976 the Post Office were inviting 'offers in excess of £500' for a Penfold, and two years later the asking price was around £700.

84. GB USED ABROAD KEV11 1d COLOMBO (Sri Lanka) to London King Edward V11 1907 1d red tied to an envelope by a very fine strike of the COLOMBO double circle dated NO 2nd sent to Clapham Common, London, manuscript arrive top 22 Nov. envelope flap missing but a quite wonderful strike and very attractive. **£80**
85. SG 244 M28 (2) 5d slate purple and ultramarine. A super corner CDS. **£25**
86. SG 246 M32 (3) 6d slate – purple (chalky) with a very light steel CDS. **£20**
87. SG 260 2/6d. VFU indeed a crisp REGISTERED steel CDS for 5 June 1905. **£80**
88. SG 262 2/6d chalky paper. Pristine mint unmounted. Never choicer **£300**
89. SG 262 2/6d with a very fine and complete THREADNEEDLE ST registered oval. A lovely crisp strike. **£70**
90. SG 262 2/6d slate – purple chalky paper. M49 (3). A superb corner Shaftesbury Ave CDS lightly placed. Stunning colour here. **£140**
91. SG 265 10/0 ultramarine. With a crisp and lightly placed Lombard St oval. The colour is wonderful. **£225**
92. SG 316 2/6d dull reddish purple. M50 (2). Very choice untouched mint unmounted. **£385**
93. SG 318 5/-. A light, crisp KILBURN steel CDS. A lovely fresh example. **£110**
94. SG 399 2/6d deep sepia – brown. With crisp BERGHOLT RD COLCHESTER CDSs. **£60**



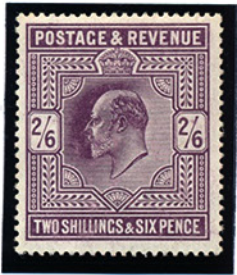
Dainty Cartons made from stout glazed yellow enamel card with a sliding inner case containing 1,000 Hinges.

No. 342. Price 9d.
Ask for Free Samples.





87



88



84



89



90



91



92



97



94



93



95



100



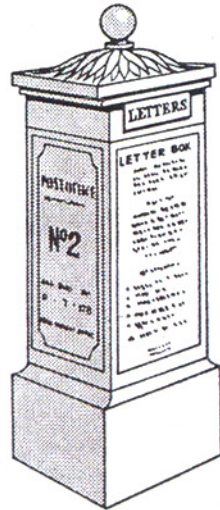
96



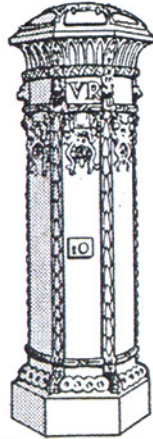
98



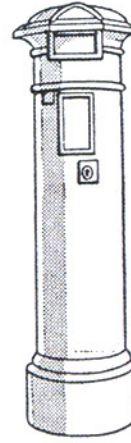
99



One of London's first pillar boxes. 1855



Standard London pillar box. 1857



1st. National Standard pillar box. 1859

Some of the first pillar boxes were very ornate in design

95. SG 401 5/- rose – carmine. With a featherlight steel CDS set well clear of kings portrait. **£140**
96. SG 441 1 ½. A pretty corner of sheet pair. Showing control number and plate number. Crisp steel CDSs. **£30**
97. SG 038 2d OW OFFICIAL. With a super upright strike a PARLIAMENT STREET CDS. Very choice and a BPA certificate accompanies. **£325**
98. SG 050 6d ARMY OFFICIAL. A post office perfect untouched mint unmounted. BLOCK OF FOUR. A BPA certificate accompanies. **£625**
99. SG 084 1d BOARD OF EDUCATION. A fine BLOCK OF 4 with light STAFFORD square CDSs. Rarely if ever seen in multiples. **£120**
100. SG 0111 2 1/2d ADMIRALTY OFFICE. An exceptional example of this difficult adhesive. A lightly placed corner CDS. Rare in this quality. **£625**

