

A FEW GOOD STAMPS.



3



12



22



48

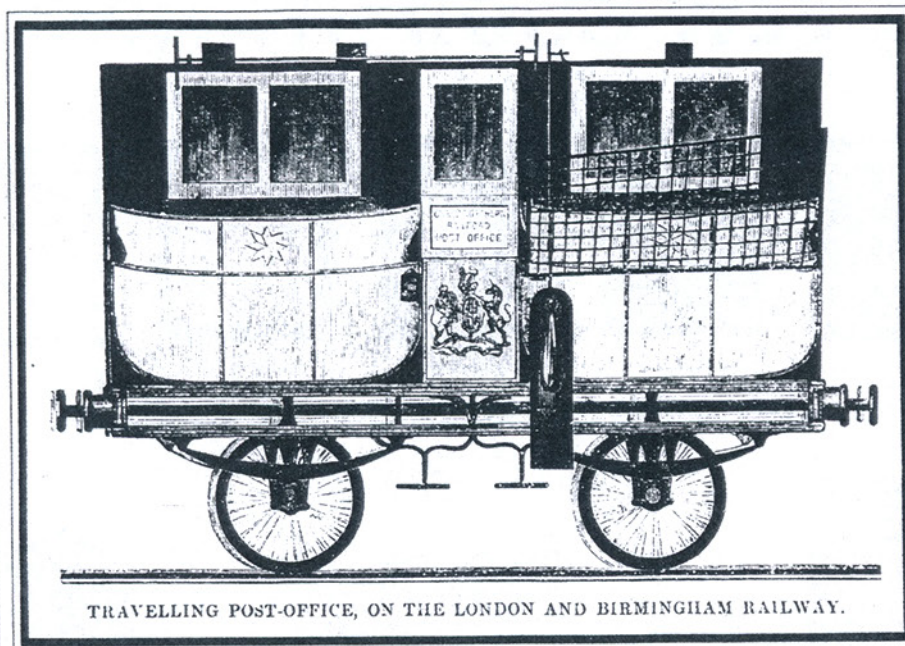


50



A nice little spread of all sorts.





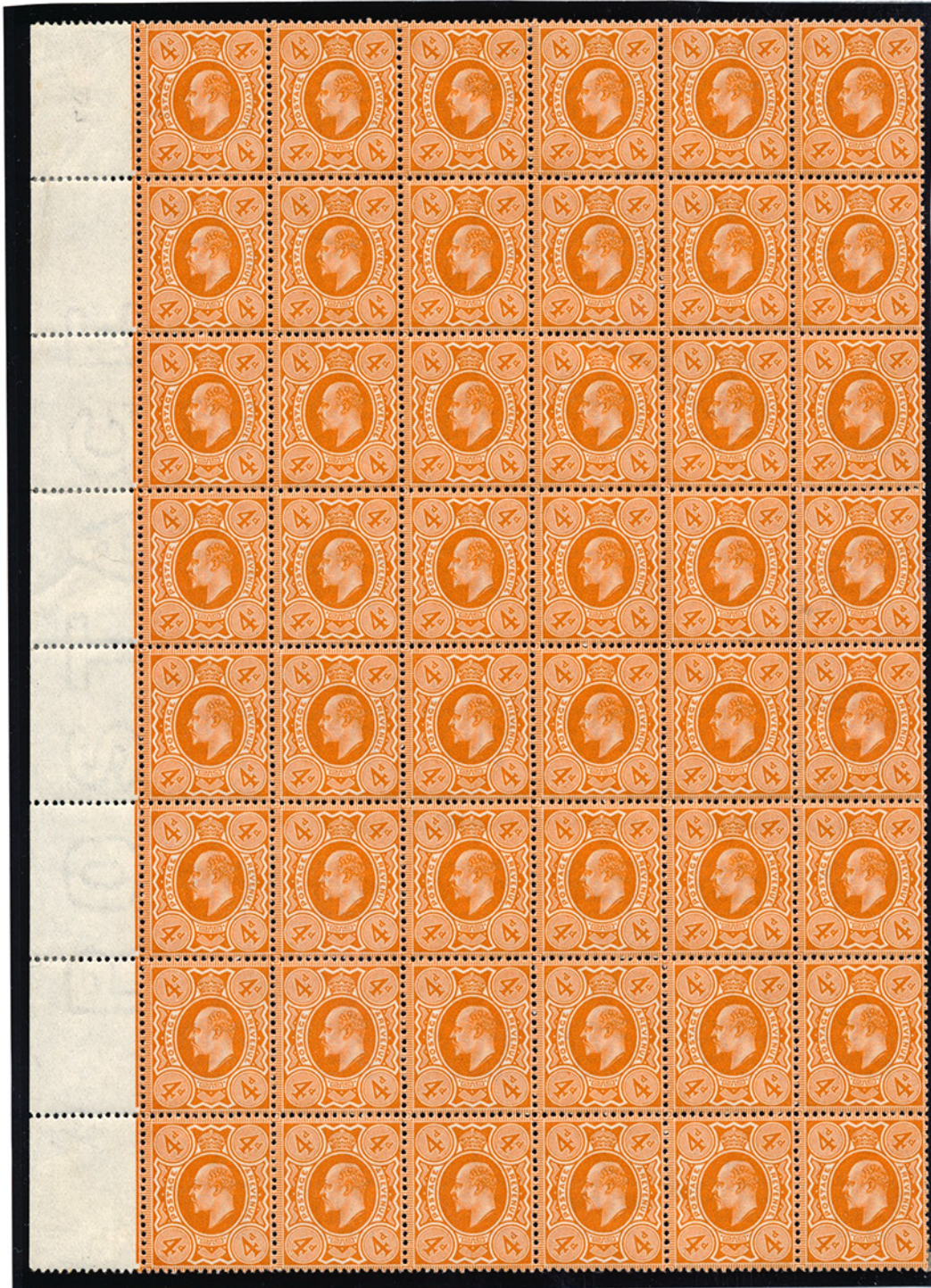
TRAVELLING POST-OFFICE, ON THE LONDON AND BIRMINGHAM RAILWAY.

1. PLATE 1a. 1d Grey Black. Lettered KJ. An exquisite example. Fully generously cut margin and a pin sharp Maltese cross in red. Stunning. A Royal certificate. £475
2. 1d Black plate 1b. Lettered LG with large-ENORMOUS margins and a crisp sharp Maltese cross in black. £385
3. THE RUBY CROSS OF ABERDEEN. 1d Black plate 4. Lettered SL. A full strike, light and clear in this delicate shade. Wonderfully cut. A lovely example and a BPA certificate accompanies. £725
4. PLATE 7. 1d Black lettered OL with excellent margins bearing part sheet marginal with inscriptional detail and a crisp, lightly applied Maltese cross in black. £625
5. 1d Black plate 7. A very fine single lettered NL. Perfectly cut with an upright Maltese cross in orange-red. £325
6. A STUNNING ADHESIVE. 1d Grey Black plate 2. Lettered QC with 4 ENORMOUS MARGINS and a pristine strike of a Maltese cross in orange-red. An amazing stamp. £675
7. 1d Black plate 2. Lettered GI with perfectly cut and balanced margins and a crisp complete Maltese cross in black. Scarce on this plate. £325
8. 1d Black plate 9. A lovely example lettered ID. Very well cut margins and a crisp black Maltese cross. £425
9. 'MANCHESTER FISHTAIL' Maltese cross. 1d Black plate 9. Lettered DJ. 4 excellent margins and a crisp strike of this distinctive cross. £350
10. PLATE 9 STATE 2 in Red-Brown. WITHOUT 'O' FLAW. Lettered AG. Choice full margins and a crisp Maltese cross. £140

Extract from The Foundations of Philately.

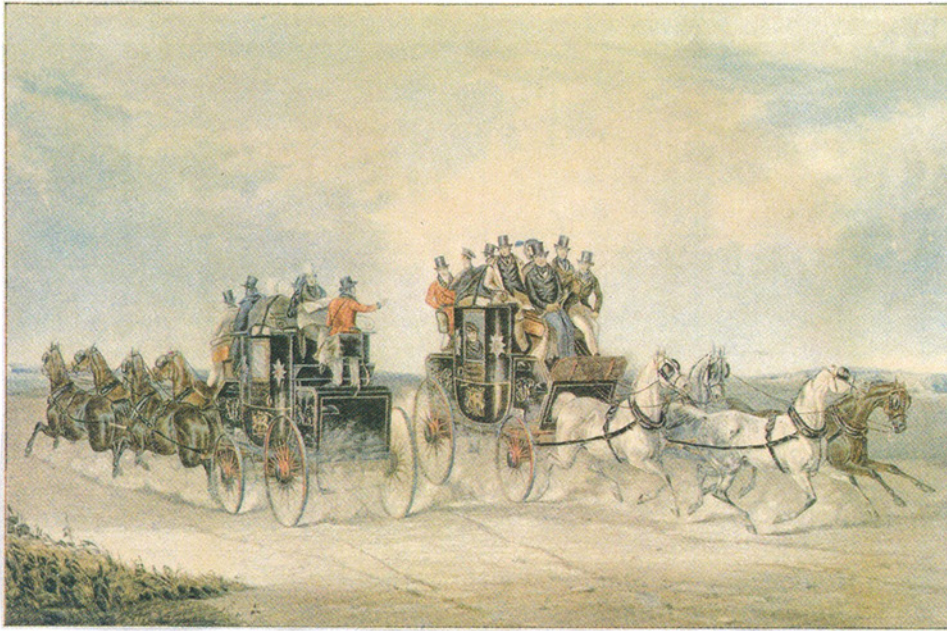
Hand Gumming Stamps.

In the early days, gum was applied by hand. When this is done it is usually painted on with a brush, very much as you would apply paste to wallpaper. Hand gummed stamps generally show the gum to be unevenly applied and streaky, frequently the brush strokes are visible. In some instances hairs from the brush may still be seen in gum. After a sheet of stamps was gummed by hand it was hung up to dry before going on to the next step in production.



British Boxes are best.

British letter boxes are to be found on many a street corner in other parts of the world than the British Isles. For example Guyana, West Indies has at least one Penfold, and a number of pillar and wall letter boxes bearing the Royal Cyphers of Victoria. Edward VII and George V can be seen in Cape Town, South Africa. A Victorian pillar box can also be seen in the main street of Pietermaritzburg, Natal. British pillar and lamp boxes are still imported by the three East African postal administrations, but the Royal Cypher has been removed from boxes imported before the three East African territories gained independence. Portable metal letterboxes for sub-post offices are manufactured locally, Gibraltar, Hong Kong and Malta also imported British boxes.



11. PLATE 10. NO 'O' FLAW. THE ORIGINAL STATE. Lettered BF. 1d Grey-Black. A finely placed Maltese cross with 4 perfect margins. A fine early state example. **£475**
12. 1840 2d BLUE plate 1. Lettered IB with good-large margins and a crisp complete Maltese cross in orange-red. Very choice indeed. **£485**
13. 1840 2d Pale Blue plate 1. Lettered OI. With good-large margins. A lightly placed and upright Maltese cross in black. Exceptional quality. **£485**
14. 1840 2d Pale Blue plate 1. Lettered CC with perfect margins and an upright strike of a Maltese cross in red. **£375**
15. NUMBER 2 IN MALTESE CROSS. 1841 1d lettered NK with margins cut good-large-huge. A crisp, upright strike. **£75**
16. PLATE TWO, DEEP FULL BLUE, CANCELLED IN RED – A PAIR. Lettered PJ-PK. Full margins. The Maltese crosses are crisp and perfectly struck. A dazzling combination. **£975**
17. 1844 DONCASTER NUMERAL CANCEL on 1840 2d Blue plate 1. A clear 255 cancel. Crisp, upright and complete. The adhesive lettered GI with perfectly cut margins. VERY FINE INDEED. **£900**
18. 1840 1d MULREADY LETTERSHEET. Neatly addressed to ST JAMES STREET. A very fine Maltese cross in black. A fine Brooke St PP cancel. Reverse a dated cancel in red for Feb 4 1842. Within, a ATLAS ASSURANCE COMPANY advertisement for the Life and Fire dept. Excellent condition and fine uncreased. **£325**
19. A DUBLIN DISTINCTIVE MALTESE CROSS. A very fine strike on 1841 1d. Lettered PC with good-huge margins. **£80**

BEHIND THE LETTERBOX. Chesmore. 1938

Bang! went the door of the Post Office. An irate gentleman strode heavily towards the counter. He looked like a retired army officer. His face was very red. His eyes gleamed. He thumped the counter with a fist that resembled a club, and in his best parade-ground manner he roared: "I'd like to shoot the whole lot of you". The counter clerk fixed him with a cool polite glance, and in the soft voice that is supposed to turn away wrath, she replied, "Certainly sir. They will supply you with a gun licence at the other end of the counter!"



ROYAL MAIL COACHES AT THE WHITE HART INN c 1825



1



2



4



5



6



7



8



9



10



11



18



13



14



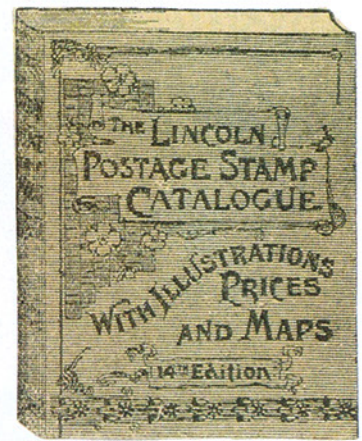
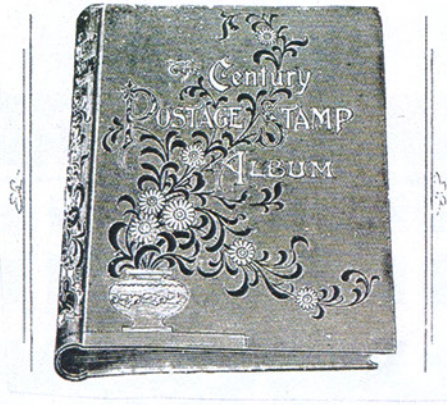
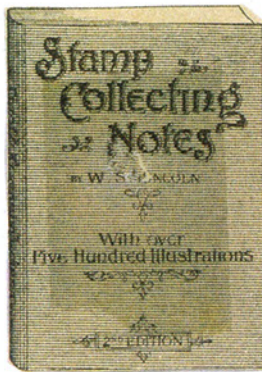
16



17



15



20. Number 8 in Maltese cross on 1841 1d lettered KD. Perfect margins and a lovely strike. **£75**
21. Number 9 in Maltese cross on 1841 1d Red-Brown. Lettered EB. With excellent margins and an upright strike. **£70**
22. A PRISTINE BLUE 328 NUMERAL OF HADLEIGH on 1844 1d lettered EH. With perfect margins and a crisp, light, upright and complete strike. MAGNIFICENT QUALITY. **£200**
23. A CLEAR BLUE NUMERAL on 1850s 1d Red Brown SG 8. Lettered IB. 4 choice margins and tied to piece by a numeral cancel in a bright shade of blue. **£120**
24. NUMBER 8 IN MALTESE CROSS on SG 14 2d Blue plate 3. Lettered GB. Good to huge margins and a lovely crisp strike. Rare this fine. **£725**
25. 1841 2d Blue plate 3. Lettered TC. Full margins and a fine strike. Most attractive. **£80**
26. SG 15. 1841 2d Deep Blue plate 3. Lettered QE. Fine full margins and an upright Maltese cross. **£90**
27. 1841 2d Blue plate 4. A perfectly cut STRIP OF 5. With London district duplexes. Middle stamp a 'PD' in red. Last two stamps half a French CDS. Perfect condition. **£165**
28. SG 24 1d Red-Brown. C3 (1) plate 15. A fine example with an upright town CDS. A Williams certificate. **£175**
29. SG 24 1d Red-Brown. C3 (1) plate 16. With a crisp LONDON SW CDS. A rarity especially in such fine condition. A Williams certificate. **£525**
30. SG C6 1d. A 'DUMB' LONDON DISTRICT DUPLEX. Most unusual and not seen by me before. **£60**
31. SG 33 1d ORANGE-RED C8 (7) plate 36. A fabulous shade. A crisp CDS. Being perfectly centred. **£185**
32. RESERVE PLATE 15. SG C13 (2) 1d Pale Rose-Red. With a crisp Town CDS lettered BK. The 'B' placed very low and far to left. Very fine. **£60**
33. RESERVE PLATE 16. 1d Rose-Red. C13 (3). Half a pin sharp ULVERSTONE CDS. Lettered RK. The 'R' centred so high it touched the top of the square. OUTSTANDING. **£70**
34. SG 35 2d DEEP-BLUE plate 6. Tied to piece by a 186 numeral and a DUBLIN CDS alongside. Exceptionally deep shade. Flawlessly centred. **£70**
35. SG 36a 2d THE 'NE' RE-ENTRY. Plate 6. A superb example with a crisp numeral cancel. The re-entry is perfectly clear. **£180**



19



20



23



21



24



25



27



26



28



29



30



31



32



33



35



36



34



37



38



41



Handsome Embossed Green and Gold Metal Box of 1,000 Hinges with black Watermark Detector Panel sunk into the underside. No. 20 (Medium Size). Price 8d.





36. PEARSON HILL Type 2 cancel. A wonderful strike on SG 39 1d plate 36. **£115**
37. INSPECTORS '1'. SG 40 1d plate 48. Two crisp strikes. Very unusual. **£80**
38. GALLOWAY SORTING TENDER. A fabulous strike on SG 43 1d. Outstanding. **£80**
39. SG 43 1d plate 102. A BLOCK OF 4 ON MOURNING ENVELOPE to Paris. A most attractive cover. Scarce to find and certainly impressive. **£140**
40. SG 43 1d plate 105. A stunning EDINBURGH Travelling Post Office CDS. An exceptional strike. **£50**
41. A FULL MALTA CDS and S25 numeral. A pair of SG 43 1d plate 112 on piece. Superb strikes. **£60**
42. VERY LATE USE OF SG 43 1d plate 129. A crisp complete GLASGOW CDS for JUNE 19 1893. **£40**
43. SG 43 1d plate 168 and SG 103 3d plate 5 on clean envelope to PARIS. Tied by 258 numerals and CDS of Dover. The 1d also tied by a red 'PD'. French receivers cancels front and back. Nice to have a line engraved and a surface printed stamp together. **£70**
44. SG 45 2d BLUE PLATE 12. SUPERB MINT. Exceptionally fresh. Glorious colour. Wonderfully centred with single hinge remain. THE RAREST PLATE IN MINT CONDITION. **£825**
45. SG 51 1 1/2d plate 1. With 'PD' in oval struck in black. Very fine and unusual. **£90**
46. SG 54 1/- pale Green. Die 1. A choice example. Fine full margins and a light numeral cancel. A difficult adhesive in such lovely quality. **£425**
47. SG 93 4d plate 13. Very well centred. A light, upright LONDON E.C steel CDS. Very fine. **£70**
48. SG 103 3d plate 7. A SUPERB IMPRIMATUR. Very well cut with light hinge remain and a Royal certificate. **£1250**
49. SG 119 2/- Deep Blue. With a featherlight steel CDS. Very fine used indeed. **£135**
50. SG 121 2/- BROWN. With a featherlight and upright steel CDS for July 30 1880. An outstanding example of this rare adhesive. **£2900**
51. SG 122a 6d Chestnut plate 11. A wonderfully struck ENNISKILLEN steel CDS. Gorgeous. **£90**



40



42



39



44



45



46



47



43



53



49



51

The Penny Post Staff. 1964. 1/2d carriage of 1790.

On October 4, 1709, a surprising individual, by name Charles Povey, impudently challenged the Post Office monopoly by starting a privately run enterprise which he called the "Half-Penny Carriage". It was modelled on very similar lines to the Penny Post of Dockwrs, except it was confined to the busy parts of London and Westminster and to the borough of Southwick. Receiving houses were set up in shops and small business, and for the price of one halfpenny Povey undertook to collect and deliver letters and packages. He popularised the use of bellmen by having messengers patrol the streets every half hour ringing a bell so that people, on hearing, could be waiting with their letters and spared the trouble of going to one of the receiving houses. Doubtless the idea was intended by way of advertisement, but people quickly appreciated its convenience and his undertaking was popular and successful. Naturally it was quickly suppressed by the Crown, Poveys half-penny carriage lasted exactly seven months, when proceedings were taken against him and he was fined £100, along with several of his bell ringers and shopkeepers who having acted as receivers were fined for the part in the venture.

52. SG 134 5/- rose plate 4. With lovely rich colour and a CHELTENHAM steel CDS A very fresh and bright example. **£1450**
53. 1874 2d UNPAID POSTAGE CHARGE MARK on printed entire of small size. Concerning the purchase of London, Dover and Chatham Railway Stock. A London SE CDS and district duplex with a London CDS on reverse. All strikes are outstanding. Very attractive. **£50**
54. SG 141 2 1/2d plate 15. With a light steel CDS. **£60**
55. USED IN BEYROUT. SG 141 2 1/2d plate 17. A crisp G06 numeral. **£70**
56. SG 145 3d Rose plate 13. Perfectly centred and very finely used a lightly placed numeral cancel. **£30**
57. SG 147 6d Grey plate 15. With a lightly placed Belfast steel CDS. **£85**
58. SG 157 2 1/2d plate 23. With a wonderful EDINBURGH double ringed CDS – full and upright. **£40**
59. SG 159 3d on 3d. A crisp BRIGHTON AND HOVE steel CDS. Lovely rich colours. **£95**
60. SG 162 6d on 6d. VFU indeed. A featherlight LONDON steel CDS. For **£120**
61. SG 163 1/- plate 13. A RARE MULTIPLE. A BLOCK OF 4. With crisp Sheffield CDSs and 700 numerals. Perfectly centred. Never seen in blocks. **£265**
62. SG 163 1/- Orange-Brown plate 14. With a pin sharp GREENOCK steel CDS. A lovely strike. **£165**
63. SG 169 5d INDIGO. Pristine MINT UNMOUNTED. Very well centred. A lovely bright adhesive. **£525**
64. SG 170 1d BLUISH-LILAC 14 DOTS. A BLOCK OF FOUR. Cancelled by crisp upright JERSEY squared circles. The only block I have ever seen. A remarkable multiple. A Hendon certificate accompanies. **£425**
65. SG 172 1d Lilac CONTROL 'F'. Very fine MM. From the scarce 1st printing. **£60**
66. 1893. A HAND ILLUSTRATED ENVELOPE. Showing a tree at right with hills at left and illustrated corner of the envelope where the adhesive has been applied. Neatly addressed. A WESTON-SUPERMARE CDS and 871 numeral and SG 172 1d. Reverse a crisp TEIGNMOUTH CDS and ornately illustrated initials. Charming. **£75**

The Morning Chronicle

3rd May 1840 on the NEW STAMP. "A word or two touching the stamp with the glutinous wash. It is a little bit of square paper about three quarters of an inch long by half an inch broad, and as it chanced to be reversed when we first saw it in the innocency of our hearts we mistook it for a patch of german corn plaster, however, on turning it over, we saw it contained what purports to be the head of her Majesty very ill-executed with the word postage above and 'one penny' below. This badge is to be affixed on the right hand of the address of the letter and in the upper corner."

11.



54



55



52



56



57



61



65



64



58



59



60



62



63



67



68



69



70



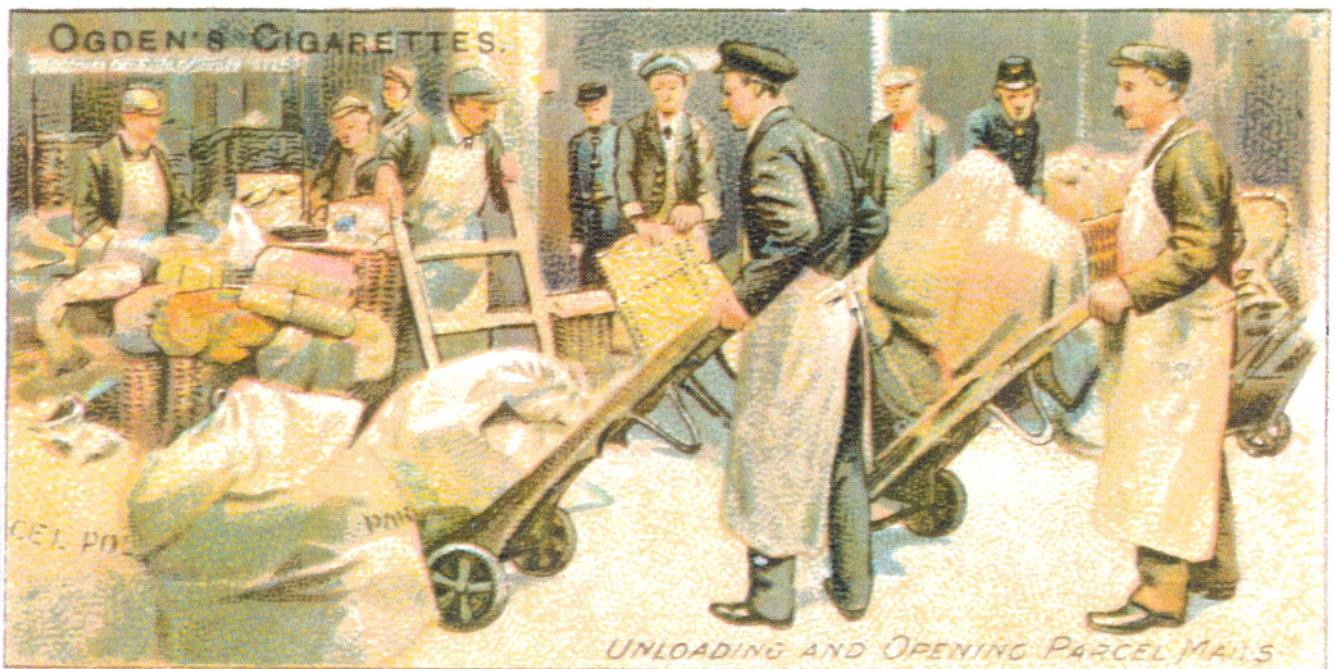
66



71



78



67. SG 175 2/6d Lilac on blued paper. With a full London CDS for April 15 1887 and part duplex cancels. Lovely colour and delicate blueing. **£220**
68. SG 178 2/6d with a razor sharp CASTLETOWN PORTLAND steel CDS. **£90**
69. SG 180 5/- with an absolutely choice LONDONDERRY steel CDS. Exceptional. **£150**
70. SG 183 10/- ULTRAMARINE. A very choice example. A lovely crisp LEEDS steel CDS. **£375**
71. SG 183 10/- Ultramarine. A crisp BRADFORD steel CDS on a perfectly centred single. **£325**
72. SG 187 1/2d Slate-Blue. A SUPERB MINT UNMOUNTED CORNER OF SHEET BLOCK OF 20. A wonderfully centred multiple. Rare so large. **£240**
73. SG 191 3d. With FABULOUS COLOUR, perfect centring and a crisp HULL steel CDS. **£110**
74. SG 191 3d. Strong colour and a crisp LONDON steel CDS. **£60**
75. SG 194 6d. Perfectly centred a light crisp MONK BAY steel CDS. Very fine. **£165**
76. SG 196 1/-. Outstanding colour. Perfectly centred a crisp corner CDS for Sept 25 1884. **£175**
77. SG 201 2 1/2d. AN IMPRIMATUR. Pristine MM with exquisite margins and outstanding freshness. **£575**
78. CONTINENTAL NIGHT MAIL double ringed CDSs on SG 201 2 1/2d. An attractive block of 4. **£40**
79. SG 214 1/-. A very fine example with a crisp and upright HORSHAM steel CDS. **£60**

The head of a large office in the south received one day, a delicately scented missive, asking him personally to recommend a nice, quiet Baptist family into whose bosom a young lady, daughter of the letter-writer, could be received as paying guest. The postmaster was particularly requested to inquire on the following points, the lowest terms per week, what kind of table was kept, and what laundry arrangements could be made, and finally the applicant omitted a stamped addressed envelope, thinking possibly that postmasters correspondence would travel free.



73



74



75



72



76



77



79



81



84



83



89



82



90



88

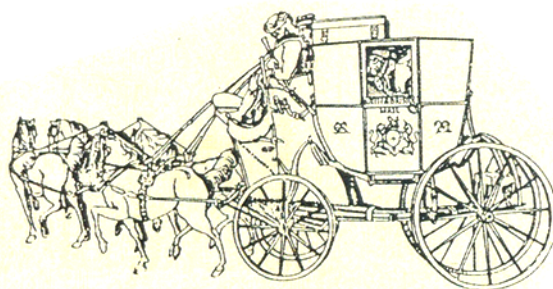


91

Behind the Letter Box.

Among the freaks with which practical jokers have tested the ingenuity of the Post Office, pride of place must surely be taken by the halfpenny stamp which was sent through the mail with the address and a message written on the back. It is remarkable that the stamp was not lost among the mass of packets with which it was mixed, but it was safely delivered and the postal staff had their own back on their tormentor by surcharging the missive a penny, postage due, as the message on the back made it liable to full letter rate. Among many other things which have been sent through the post are a rabbits skull, a cigarette, a slice of potato, a linen collar, a biscuit, and a turnip. All these things were unwrapped the address being written on the actual object. Still more ingenious and a striking example of the lengths to which these leg pullers will go, was the 'postal packet' consisting simply of a piece of delicate lace, with the name and address done in crochet work.

80. A FIRST DAY COVER FOR THE EDWARD 1/2d, 1d, 2 1/2d and 6d. A registered envelope sent locally within GLOUCESTER bearing the first four Edward values each cancelled by a superb CDS for JAN 1 1902. GEORGE ST GLOUCESTER CDS and another on reverse for JAN 1st. 'R POST PAID' at lower left. Tiny opening fault and reverse flap a small stain. A SUPERB FIRST DAY OF ISSUE. Most striking and attractive. A RARE OPPORTUNITY £1450
81. FIRST DAY OF ISSUE. SG 219 1d with a crisp, upright LONDON CDS for JAN 1 1902. **£60**
82. SG 239 4d Brown-Orange. A superb CDS example of this difficult shade. Perfectly centred – outstanding colour. **£70**
83. SG 257 1/-. A wonderful BLOCK OF FOUR. Tied to piece by crisp SOUTHAMPTON HEAD TELEGRAPH OFFICE CDSs. The colours are rich and vivid. **£90**
84. SG 262 2/6d chalky paper. Pristine MINT UNMOUNTED. Never choicer. **£290**
85. SG 266 £1 Dull Blue-Green. With full rich colour and a clearly struck GUERNSEY steel CDS. A lovely example of this Edwardian high value. **£385**
86. SG 275a. 1d ANILINE ROSE. A lovely example with a crisp steel CDS. **£110**
87. SG 286 3d BRIGHT ORANGE. A SUPERB SIDE OF SHEET MARGINAL BLOCK OF 48 with only 2 adhesives showing hinge remains. Full 'POSTAGE' watermark within sheet margin. A few additional hinge remains here but EXCEPTIONALLY FRESH with a spotless reverse. Most rare as a multiple of this size. **£1850**
88. SG 303 6d. A marginal pair crisp ABERDALE steel CDSs. Attached margin showing printers date cut. **£80**
89. SG 316 2/6d Dull Reddish Purple. VFU a pristine FINCHLEY GREEN steel CDS. Lovely quality. **£110**
90. SG 316 2/6d Dull Reddish Purple. With a crisp Shaftsbury Avenue steel CDS for Sept 25 1911. **£95**





85



86



92



93



94



95



97



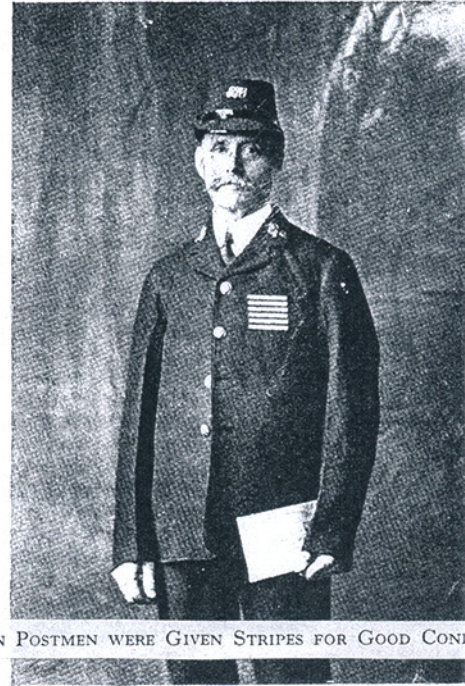
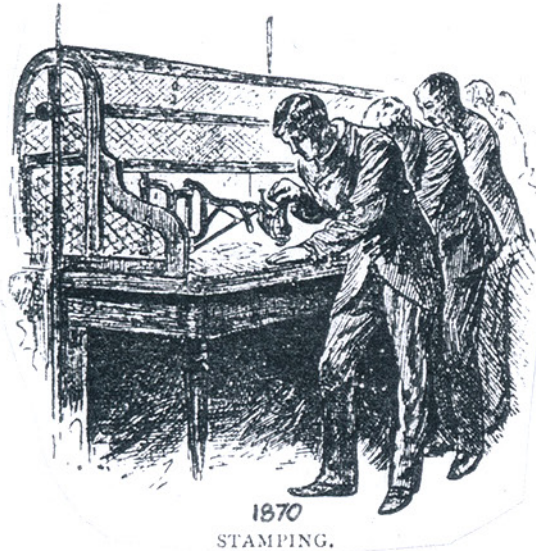
98



99

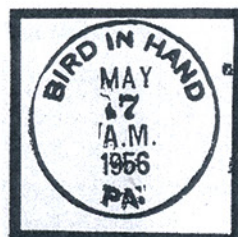


100



WHEN POSTMEN WERE GIVEN STRIPES FOR GOOD CONDUCT

91. SG 319 10/-. A very fine single. Well centred, wonderfully fresh and a featherlight CDS which surrounds a clear Kings portrait. **£350**
92. SG 319 10/- Blue. The lightest steel CDS on a very choice example. **£325**
93. SG 402 10/- INDIGO BLUE. PRISTINE UNTOUCHED MINT UNMOUNTED. Perfectly centred and in superb condition. **£875**
94. SG 407 2/6d Grey Brown (worn plate). A choice mint unmounted single. Wonderfully centred and amazingly fresh. **£475**
95. SG 409 5/- Bright Carmine. Quite untouched MINT UNMOUNTED. The freshness is amazing. **£625**
96. SG 452 10/- ON ENVELOPE TO PANAMA. Of nice small size. Perimeter wrinkles/dents. Reverse a nice combination of 5 cancels. These Seahorses are unusually found on unusually large envelopes. Lightly placed CDS and in combination with a 3d. Nice and clean. **£165**
97. SG 452 10/-. A fine, well centred BLOCK OF 4 with lightly placed LONDON CDSs. **£140**
98. SG 069 1d and 070 2d x 2 tied to piece by light steel CDSs for 4 NOV 1897. An attractive piece. **£70**
99. SG 071 4 1/2d GOVT PARCELS. Superb mint with lightest hinge trace. A lovely fresh adhesive. **£225**
100. SG 084 1d BOARD OF EDUCATION. With a lovely corner CDS. **£30**



Bird In Hand

Bird In Hand, Lancaster county, Pennsylvania, U.S.A., took its name from an old hotel sign.

The sign pictured the proverb 'a bird in the hand is worth two in the bush' and portrayed a boy holding a bird in his hand and two birds in the bush beside him.