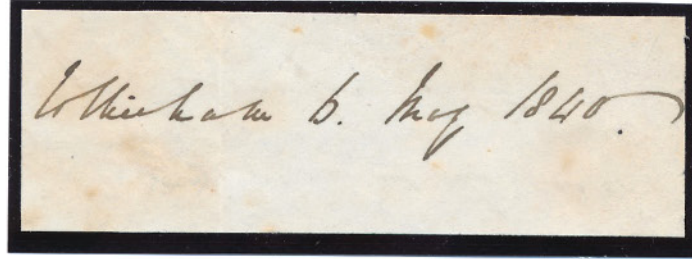


TIME TO TREAT YOURSELF



6



3



17



AND FILL A FEW GAPS.



66



60



33



61



99



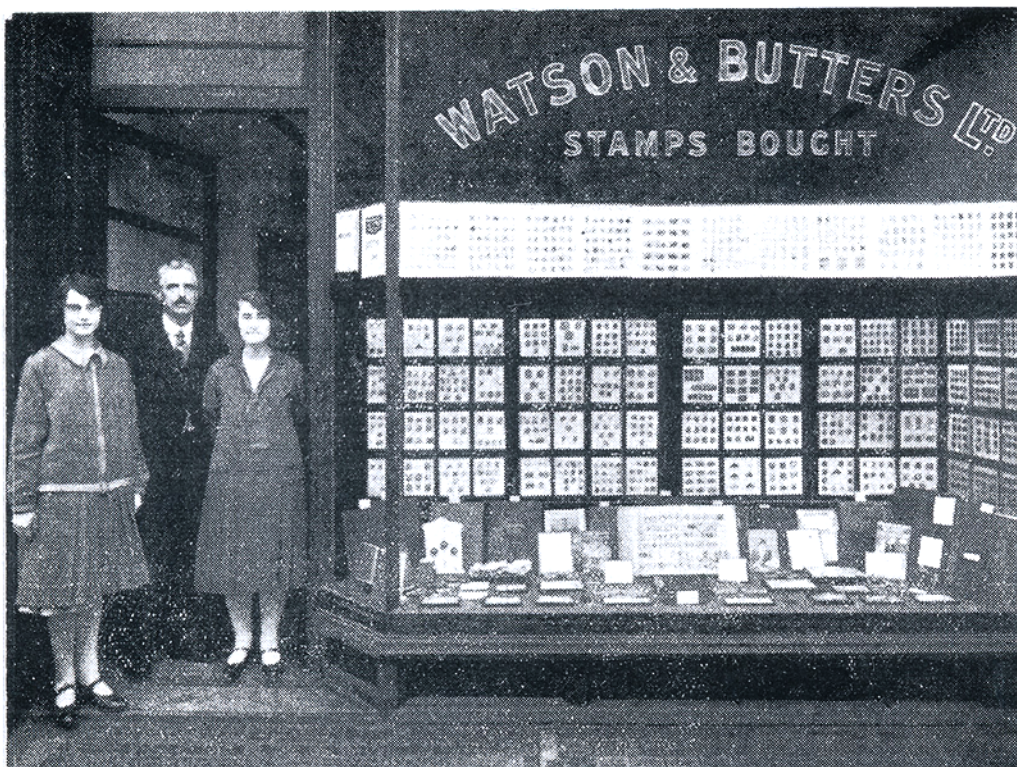
94



34



96



1. 1761 entire letter with LANCESTON cancel. An outstanding strike. At face of fine 'PD' and over a good Bishop mark. Attractively addressed to CHANCERY LANE. Letter within covers every corner of the page including being written in the side margin. A nice Cornish letter to London. £65
2. SCOTLAND – HADDINGTON: 1813 ENTIRE LETTER TO EDINBURGH. 1813 entire letter with a boxed HADDINGTON 370 – B mileage mark an Edinburgh CDS in red (ED43) dated 15 AUG 1813 and a manuscript "5 ½" rate mark. File crease. With full letter content. Both strikes are outstanding. £60
3. MAY 6th 1840. Cut from a letter sent on the first day of the 1d black and 2d blue. 'ROTHERHAM 6 MAY 1840' The most important date in philately. £45
4. Plate 1a showing very slight signs of plate wear. A wonderful adhesive lettered RJ. Outstanding well cut margins and a light full and upright Maltese cross in red. £385
5. 1d grey black plate 1a showing moderate plate wear. Lettered I I with excellent margins and a vivid deep orange red maltese cross. A lovely adhesive. £385

The Sacred Mails

Of the many contributions of service to modern civilisation which Britain can be proud to record there can be few of such unassailable and universal benefit as the postal system. It is true that Posts were organised in Europe long before couriers bearing the royal Arms of England galloped northwards on the King's business more than four and a half centuries ago. But it was the Royal Mail which first became a right for all instead of a privilege of the few. The plans of a succession of bold and imaginative men brought a cheap and efficient service which became at first the envy of, and later the example for, other countries. The tradition that the mail is sacred, that its expedition on its journeyings precedes almost every other consideration, stems from this country. It is a remarkable fact in the troubled times in which we live that the world postal organization is the nearest approach to complete international understanding and co-operation that can be found. The ability of any person in the world to send a letter to another, wherever he may be, is regarded as a natural thing. No better testimonial could be required as to the sound basis on which the posts were built from the very beginnings of a rudimentary system fifteenth-century England until the present time with the peoples of the world "held together by a postage stamp".

3.



1



4



5



7



8



9



10



2



21

A young Postman had had much trouble with a dog at one of the houses on his daily delivery. As he had been bitten, he was asked to furnish a brief report. He did, and it ran "The dog, 'Ginger' by name bit me hard. 'He is now dead'. Yours truly W Smith.

6. Plate 1a. 1d grey black showing moderate plate wear. Lettered AC. A truly dazzling Maltese cross in bright orange – red. Margins are cut good – HUGE. Very striking indeed. A magnificent adhesive. £575
7. PLATE 1a CANCELLED IN BLACK. 1d grey black showing a very worn plate. Lettered GG with excellent margins. The cross is pin sharp. **£425**
8. 1d black plate 1b. Lettered OL with large margins on 3 sides. 4th being part sheet marginal showing portion of inscriptional detail. A featherlight Maltese cross in red. An outstanding adhesive. £450
9. 1d grey black plate 2. Lettered LF showing vertical guide lines inside F square and outside N E square. Wonderfully cut with a crisp maltese cross in orange – red. **£325**
10. 1d black plate 4.. A magnificent single lettered GB. Choice margins and an orange red Maltese cross just over one corner. **£350**
11. 1d intense black plate 5. An outstanding adhesive. Lettered FC. Superbly cut and a crisp complete maltese cross in vivid red – orange. Wonderful single. £450
12. 1d intense black plate 6. Lettered JD. Good – large margins and a clear full and upright Maltese cross in red. Outstanding. £425
13. 1d grey black plate 6. A superb example lettered LB. Choice margins a crisp, light Maltese cross in black **£325**
14. 1d black plate 6. A FABULOUS SINGLE. With gorgeous and outstanding margins. Lettered IE. A crisp light and upright maltese cross in orange – red. THE BEST. £425
15. BLACK PLATE 8 in red brown. With a choice and full Maltese cross and excellent margins. **£110**
16. Black plate 10 in red – brown. Lettered LK showing a very clear ‘O’ flaw and a lovely light Maltese cross. **£90**
17. 1840 2d pale blue plate 1. Lettered BE. 4 choice margins and a light double strike of a Maltese cross in vivid orange – red. **£450**
18. 1840 2d pale blue plate 1. A lovely pale shade. Lettered AC with good – large margins and a very light Maltese cross in black. **£440**
19. 1840 2d blue plate 1. Lettered PC. With full choice margins and a complete Maltese cross in black. **£365**
20. 1840 2d pale blue plate two. Lettered LK with choice full margins and a crisp black Maltese cross **£485**

The Post Office and its Story. Bennett 1912

The sub-postmistress is of course often one of the village folk herself, and she is frequently exposed to gossip and unworthy suspicions. The lady who had charge of a certain village post office was strongly suspected of tampering with parcels entrusted to her care. If anything went wrong with them in any part of the Kingdom, she was to blame. One day a rosy-cheeked youngster, dressed in his best clothes, entered the post office and carefully laid a huge slice of iced cake on the counter. "With my sister the bride's compliments, and you will please eat as much as you can". The sub-postmistress smiled delightfully "How very kind of the bride to remember me. Did she know of my weakness for wedding cake?" "She did", answered the youngster coolly, "and she thought she'd send you a bit of it this afternoon, just to take the edge off yer appetite before she posted boxes to her friends".

5.



11



12



13



14



15



16



18



19



20



22



23



24



25



26



27



28



29



30



32



31



35

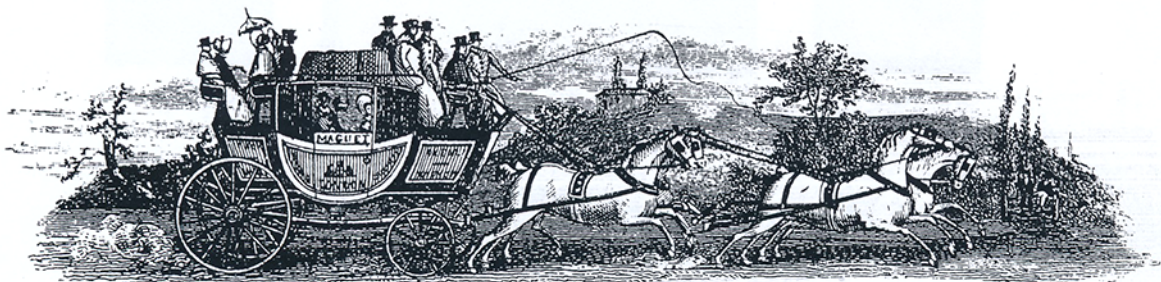




An old print showing the interior of the travelling post office van. 1838

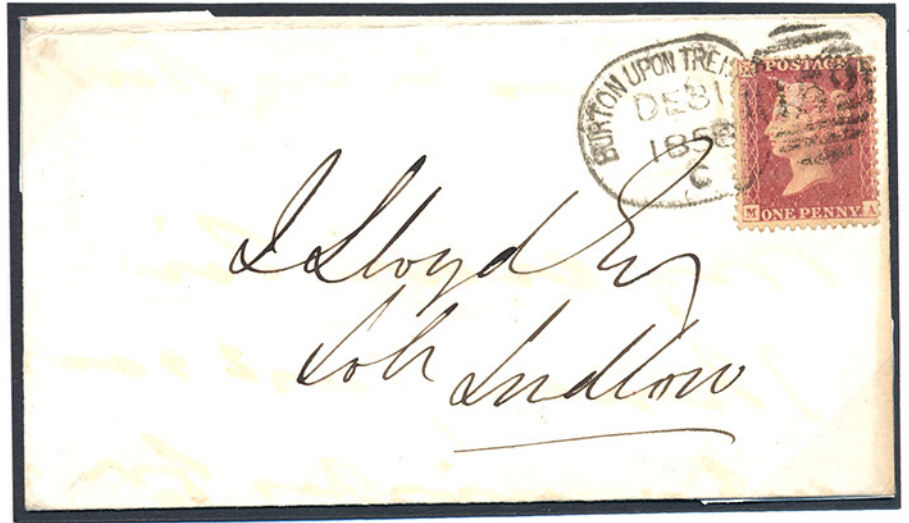


21. 1845 LONDON PAID TOMBSTONE WITH DATE & CODE LETTER OMITTED. A "Life Assurance Office" printed lettersheet cancelled by a very fine London paid Tombstone without date. The lettersheet has been endorsed 1 in red ink. Vertical file fold clear of handstamp. PROBABLY UNIQUE. An exceptional postal history error. With certificate. **£725**
22. Number 1 in maltese cross. A lovely crisp strike on 1841 1d with 4 fine margins. **£70**
23. Number 8 in Maltese cross. A lovely crisp strike on 1841 1d lettered QL with full perfect margins. **£75**
24. Number 9 in maltese cross. A wonderful strike on 1841 1d red – brown. **£90**
25. NUMBER 10 in maltese cross. On 1841 1d red – brown. With fine full margins and a lovely clear strike. **£140**
26. Number 10 in maltese cross. A crisp upright strike on 1841 1d plate 35. With 4 excellent margins. **£130**
27. A DUBLIN DISTINCTIVE MALTESE CROSS. A very fine strike on 1841 1d. lettered PC with good – huge margins. **£80**
28. 1841 1d plate 16. Lettered FL with good – huge margins and a lovely Maltese cross crisp, full and upright. **£40**
29. A BLUE NUMERAL. 1844 1d lettered BB. Perfect margins and a lightly applied numeral cancel in blue. **£115**
30. SG 8 1d A LONDON CDS. From plate 164. With full excellent margins. The CDS is crisp and upright. **£285**





36



42



41



37



38



43



40



47



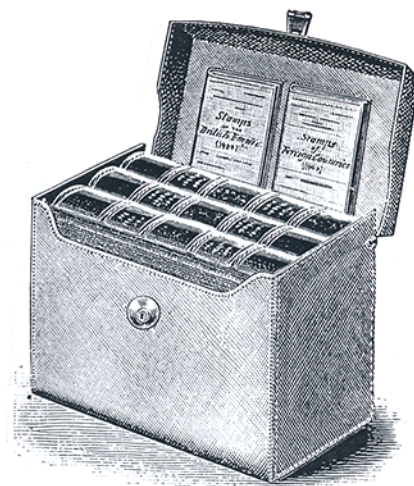
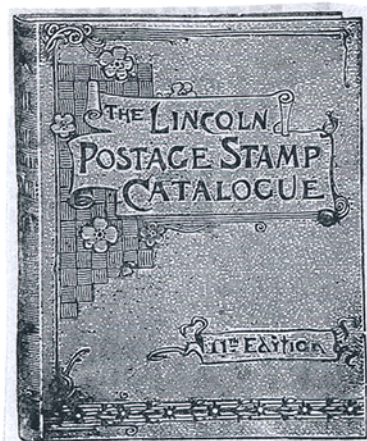
46



39



48



31. SG 9. 1d pale red – brown. A SIDE OF SHEET MARGINAL PAIR with full margins clear to large and with crisp 927 numerals of Yarmouth. **£250**
32. SG 9 1d pale red – brown. Plate 87. Lettered A E being part sheet marginal. A partial numeral cancel. A lovely shade and a big stamp. **£55**
33. SG spec B2k. 1852 1d deep red – brown on LAVENDER TINTED PAPER. Plate 135. A FABULOUS BLOCK OF FOUR CANCELLED CONTRARY TO REGULATIONS by 3 X 852 numerals of Welshpool. Lettered CB – DC with outstanding full margins. The reverse with excellent IVORY HEADS. Very rare in multiples and of EXHIBITION QUALITY. **£1100**
34. SG 13 2d pale blue plate 3. A fine full margined strip of three. Each adhesive a crisp Scottish Maltese cross. **£220**
35. SG 14 1841 2d blue plate 3 lettered ID. Full fine margins and a lovely light maltese cross **£115**
36. 1841 2d blue. A block of 4 from plate 3. Lettered MI – NJ with fine full margins and crisp London district duplexes. Rarely seen in perfect condition. **£385**
37. SG 14 2d blue plate 4. Lettered EI. With 4 choice margins and a crisp London District duplex. **£60**
38. SG 20 2d pale blue plate 4. Very finely used. A lovely example. **£60**
39. SG 29 1d plate 33. A pair. With a complete Liverpool spoon cancel very nicely struck. **£45**
40. SG 29 1d plate 35 with a light and upright steel CDS. **£45**
41. SG 34 2d blue. Lightly used and tied to uncreased wrapper by a crisp EXETER CDS for DEC 29 1857 and duplex cancel. A superb EXETER BANK wax seal reverse flap. **£90**
42. SG 40 1d tied to very clean envelope by a superb BURTON UPON TRENT SPOON A London CDS reverse flap **£60**
43. SG 42 1d PLATE 50. Alphabet 4 with HAND CUT CHECK LETTERS. Tied to small envelope by a 820 numeral and Tunbridge Wells CDS. Fine and pretty **£55**
44. SG 43 1d plate 76. A side marginal mint block of 4. One adhesive with light hinge trace. Fine inscriptional detail. **£120**
45. SG 43 1d plate 79 with GREENOCK 163 dotted circle on envelope to Darlington. Type 2 dotted duplex with 31 cuts. Reverse a Darlington CDS. **£60**



45



44



50



55



53



62



51



49



52



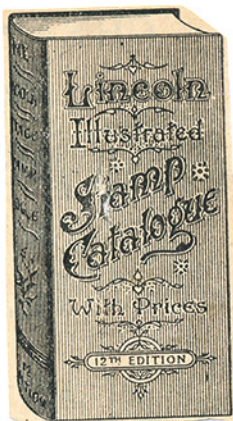
59



54



56



46. SG 47 2d blue plate 14. SUPERB MINT. Fine and very fresh MM. A lovely single. **£185**
47. PLATE NINE. SG 48 1/2d well centred. Lightly used with both plate numbers being perfectly clear. **£325**
48. SG 52 1 1/2d lake – red plate 3. With a crisp SOUTHWELL steel CDS. **£70**
49. SG 59 6d dull lilac. With fine full margins and excellent colour. A very light numeral cancel. **£350**
50. USED IN BRITISH GUIANA. SG 66 4d with a crisp AO3 numeral. A rare cancel. **£240**
51. USED IN FRANCE. SG 66 4d rose – carmine. A very fine Diamond spotted cancel. Crisp and complete. **£85**
52. SG 102 3d plate 7. Deep rose. With a crisp and light PARK LANE steel CDS. **£40**
53. SG 103 3d plate 8. A handsome block of 4 cancelled CONTRARY TO REGULATIONS by two very fine STAFFORD steel CDSs. **£240**
54. SG 103 3d plate 9. A featherlight ABERDEEN steel CDS. **£65**
55. SG 108 6d dull violet plate 9. Bottom of sheet marginal with a complete 498 numeral of Manchester perfectly struck. **£45**
56. USED IN VALPARAISO. Sg 112 10d. A light but perfectly clear Valparaiso steel CDS. **£220**
57. USED IN BEYROUT. SG 114 10d deep red brown. With a crisp and upright GO6 numeral cancel. A very fine strike. **£160**
58. SG 121 2 /- brown. With outstanding colour and freshness. A good part London District duplex postmark. A fine example of this rare adhesive. **£1600**
59. SG 126 5/- rose plate 1. With excellent colour and a lightly placed registered duplex. **£120**
60. SG 135 10/- greenish – grey. A beautiful example with wonderfully rich colour. Well centred and a crisp complete IPSWICH steel CDS. **£3200**
61. Sg 136 £1 brown – lilac. A beautiful example of this rarity. Very well centred. Excellent colour. A crisp Royal exchange CDS and part of another. An outstanding adhesive. Wonderful quality. **£4400**
62. SG 141 2 1/2d plate 12. Superb lightly hinged with sheet margin still attached. A lovely piece. **£220**
63. SG 141 2 1/2d rosy mauve plate 12. A lovely crisp GLOUCESTER steel CDS. **£90**
64. SG 144 3d pale rose plate 20. With a crisp CURREN open town steel CDS. **£90**
65. SG 147 6d plate 16. A lovely example with a crisp corner CDS **£70**



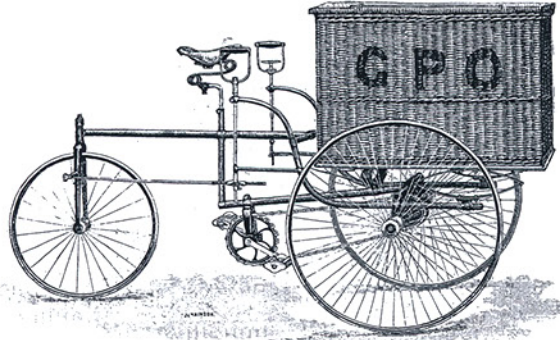
'There's been an accident!' they said,
 'Your servant's cut in half; he's dead!'
 'Indeed!' said Mr. Jones, 'And please
 Send me the half that's got my keys.'

LONDON : 14, Holborn Viaduct, E.C., and 5, Lisle St., Leicester Sq., W.

1886

"PREMIER" CARRIER TRICYCLE.

As supplied to H.M. Government for Postal Service.



THIS Machine is being supplied to meet the want of tradesmen having an extended "round" of customers to visit, its carrying capabilities being well proportioned to its relative lightness and ease of running.

SPECIFICATION.—30in. x 2in. side wheels, 24in. back wheel, best rubber tyres, adjustable ball bearings (4) on axle, 10 steering wheel and crank-axle, band-brake (with arrangement for continuous application of brake power), adjustable handles and seat pillar, combination saddle and spring; plated parts; basket mounted on three springs to prevent vibration; mud-guard to back wheel.

Measurements of basket—Width, 22½in.; length, 24½in.; and depth, 14½in.

PRICE £25 : 0 : 0.

Delivery free on rails, Coventry only. For packing charges see page 4.
For particulars of Hire Purchase by monthly instalments, see inside back cover.



57



54



63



64



65



67



68



69



70



71



72





66. SG 147 6d plate 17. A SUPERB IMPRIMATUR. With excellent very well cut margins. Full original gum and a single hinge trace. One of 24 examples cut from the registration sheet. **£1200**
67. SG 153 4d plate 15. Excellent freshness. VFU a corner steel CDS for **£145**
68. SG 153 4d sage green plate 16. A lovely crisp LONDON E.C steel CDS. **£110**
69. SG 158 3d plate 20. A crisp MIDLETON steel CDS. The colour is wonderfully rich **£60**
70. SG 162 6d on 6d. Superb mint. With lightest hinge remain, perfectly centred and outstanding colour. Very fine. **£250**
71. SG 162 6d on 6d. A VFU example with a crisp CHLEMSFORD steel CDS. With RPS certificate. **£115**
72. SG 169 5d INDIGO. Superb mint. A fine MM single with wonderful colour and freshness. **£275**
73. SG 169 5d indigo. VFU indeed. A crisp BRIGHTON H.P.O (Head Post Office) CDS. RPS certificate. **£90**
74. SG 175 2/6d LILAC blued paper. Very well centred and VFU with a crisp GUILDFORD steel CDS for AUG 11 1884. The delicate blue tinge to the paper is clear to see. A faint crease but very finely cancelled and A RARE ADHESIVE. **£825**
75. SG 175 2/6d lilac on blued paper. Very well centred with a crisp London Hooded CDS for May 13 1887. A nice early date. **£625**



DECIPHERING THE "BLIND" LETTERS. 1890



Postman on stilts in the Landes, France. The stilts were useful in deep sand, but it was difficult to deliver letters to short customers and, as a French record points out, it was most awkward when the postman had imbibed too freely.



74



75



76



77



78



84



79

In 1845, five years after the epoch-making introduction of the postage stamp, this item of news appeared in a German illustrated magazine: 'In England which has very insignificant yet regular postal service, The Post Office seals small square pieces of paper bearing the head of the Queen, and these are stuck on the letter to be franked. In this simple manner the postage due is paid. To prevent a label being used twice the Post Office cancels the little piece of paper on the letter received with a black cross. The Queens heads look very pretty and the English reveal their strange character by collecting these stamps.'



73



89



81

The Undeliverable Packet

I am afraid a great many people furnish puzzle with malice aforethought, and the Department does its best to discourage such attempts to waste its time. An official may sometimes make an effort to deliver such packets, but there is no call upon him to do so. For instance, a letter was posted in London addressed to as follows:-

"From an old Bachelor
To a Young Lady
The youngest of three
Who lives in a house
Close down by the sea
The house is quite large
Part of it used for a shop
Where the relatives
deal in tea, bacca, and soap
In the scraggy end of the British Isles"
The letter was passed from one sorter to another, and was finally hung up. Then a sorter write in blue pencil across it:-

"Now postal officials dont curse so;
Its probably intended for Thurso"

76. SG 178 2/6d. with a fine LEICESTER steel CDS. **£75**
77. SG 178 2/6d with a wonderful ST NOETS steel CDS. Clear and complete. Very fine. **£110**
78. SG 180 5/- rose. A crisp CAHIR CDS for July 25 1885. Cahir is in County Tipperary. **£90**
79. SG 183 10/- ultramarine. Perfectly centred, excellent colour and a crisp Glasgow steel CDS. **£250**
80. SG 183 10/- ultramarine. A crisp BRADFORD steel CDS on a perfectly centred single. **£325**
81. SG 191 3d lilac. Magnificent full colour and freshness. VFU indeed a crisp GEORGE ST. EDINBURGH steel CDS. A beauty. **£110**
82. SG 194 6d. with lovely colour and a crisp CHIPPING NORTON steel CDS. Very fine **£110**
83. 1890 JUBILEE OF UNIFORM PENNY POSTAGE. A pre paid envelope with a perfectly struck South Kensington cancel for July 2nd. **£60**
84. SG 212 £1 green. With a crisp LEEDS steel CDS. Very fine indeed. **£525**
85. SG 214 1/-. A very fine example with a crisp and upright HORSHAM steel CDS. **£60**
86. SG 239 4d brown orange. With a crisp Chiswick station steel CDS. **£70**
87. SG 260 2/6d. A lovely bright single. A crisp Guernsey steel CDS. **£85**
88. SG 262 2/6d with a very fine and complete THREADNEEDLE ST Registered oval. A lovely crisp strike. **£70**
89. SG 264 5/- deep bright carmine. A rarely seen strip of 3. Featherlight CDS to each adhesive. A STRIKING MULTIPLE. **£240**

Secret Letter Opener.

Under the regime of Cromwell the letter-opening activities were naturally to the fore, and they were continued when Charles II came to the throne. There were many stories of a remarkable machine which was kept in the General Letter Office. The claims that it could open and seal letters so perfectly that the tampering defied detection are not particularly remarkable, but they boast that it could also take facsimile copies of letters certainly is. These stories are, however, well founded, and it is reported that Charles was so fascinated by the device that he used to go around at night to watch it work. It was destroyed when the Letter Office was burned down in the Great Fire of London, and with it the secret went too. Many chemists and photographers have debated the system which was used if contact copying was possible, as it seems to have been.



82



85



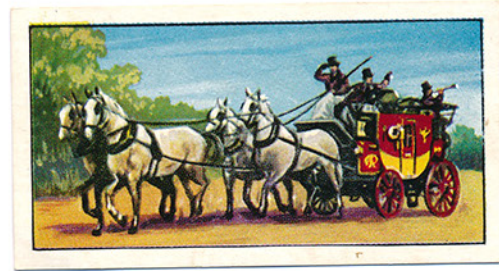
80



86



91



87



89



90



93



95



98



97



92

Early Channel Island Post

Prior to the establishment of Post Offices in Jersey and Guernsey and a regular packet service to the Islands in 1794, letters for those places were sent to an agent, usually at Southampton but occasionally at Brixton or Portsmouth; master and 1d for each agent. Letters from the Channel Islands to England were handed over to the post office at Southampton by the ship's captain and therefore cost only 2d on top of the postage. Most of the agents were merchants but some were also ship owners and one or two shopkeepers or bankers. Many of the London coffee houses also acted as agents and bags for particular ship's captains were often to be found in them.



100

BEHIND THE LETTERBOX. Chesmore. 1938

Bang! went the door of the Post Office. An irate gentleman strode heavily towards the counter. He looked like a retired army officer. His face was very red. His eyes gleamed. He thumped the counter with a fist that resembled a club, and in his best parade-ground manner he roared: "I'd like to shoot the whole lot of you". The counter clerk fixed him with a cool polite glance, and in the soft voice that is supposed to turn away wrath, she replied, "Certainly sir. They will supply you with a gun licence at the other end of the counter!"

90. SG 265 10/- ULTRAMARINE. A crisp, light, complete and upright jersey steel CDS. **£325**
91. SG 294 5d deep plum and cobalt blue. M30 (4) with a featherlight steel CDS. **£25**
92. SG 295 6d Royal purple. VFU indeed with a light RÆGENT ST steel CDS. **£55**
93. SG 317 2/6d dark purple. With half a Cannon St steel CDS. **£90**
94. SG 410 5/- pale carmine. Very worn plate. Superb mint. A lovely MM example showing excellent wear. **£375**
95. SG 411 10/- deep blue. Wonderfully rich colour well centred and a crisp upright JERSEY steel CDS. A difficult shade. **£625**
96. SG 412 10/- blue. With a featherlight steel CDS set clear of The Kings Profile. An outstanding example. **£425**
97. SG 416 5/- with a superb upright LETCHWORTH CDS for 1 Aug 1929. **£85**
98. 10/- STEEL BLUE. SG 417 N 71 (3). Superb mint with single light hinge remain. A fantastic shade and a BPA certificate accompanies. **£525**
99. SG 072 1/- GOVT PARCELS. A truly exceptional adhesive. Stunning colour and a pin sharp LENNOXTOWN steel CDS. **£175**
100. SG 078 1/- GOVT parcels. With fabulous colours and an exquisite corner BELLSHILL steel CDS. Very fine. **£185**

Sir Lauder Brunton, Physician, on Philately.

"There are a great many people who die in this world from the very simple malady of having nothing whatever to do. They pass their lives in accumulating money, with no relaxation, and then when they retire from active work they die of ENNUI. They come to me and complain of so many things, and say 'what shall I do'. I tell them to collect, it will add ten years to their lives. The wise men do so, others do not and the wise men live on. That is the use of collecting stamps at the end of life.

**Clock Face**

A district near St. Helens, Lancashire, England.



An early English Post Office.