

SPLENDID ADHESIVES.



8



4



5



Another little spread of all sorts philatelic.



62



49



57



47

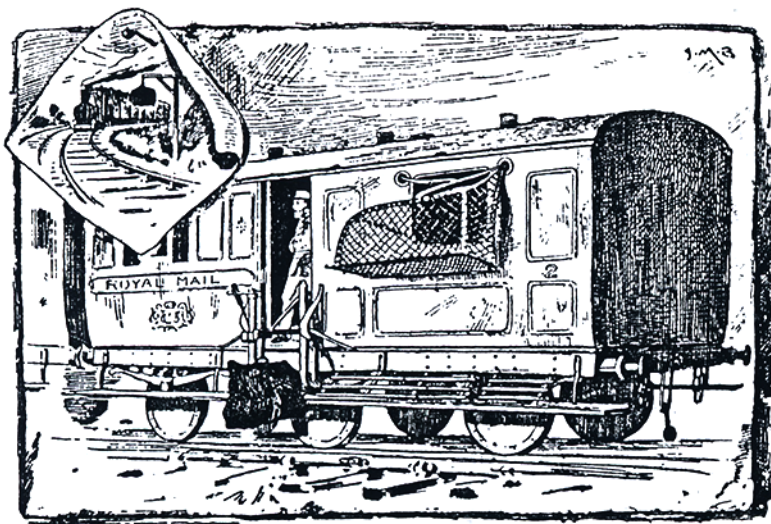


63

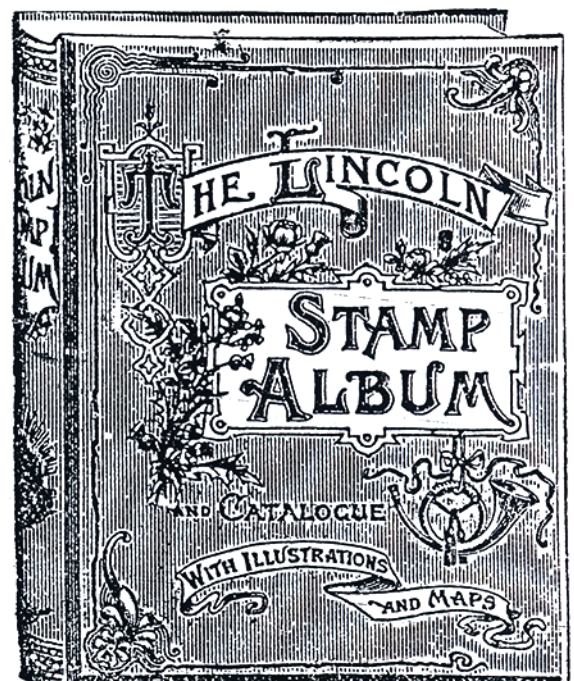
POSTBOY TO AIRMAIL. Jackson.

A Clergyman complained to the local postmaster that the postman rang too loudly upon his street bell. The bell was of the old fashioned pull-out type with a long wire attached running the whole length of the hall. The men were all cautioned to use extra care. The very next morning Postman Jones stepped gingerly up the recently washed doorsteps, took hold of the bell pull, and prepared to give a gentle tug. At the critical moment he slipped and fell down the steps, still holding the knob. Instead of staying behind to explain his misfortune he bolted and the quiet street saw the irate Clergyman, in carpet slippers, pelting a poor Jones, convinced that this was a direct off-set of his complaint of the previous day – nor could he ever be convinced to the contrary.

1. JANUARY 10th 1840 – THE FIRST DAY OF UNIFORM 1d POSTAGE. Entire letter endorsed '1' with a 'PAID' in red for JAN 10th. Also endorsed 'PAID'. Addressed to Liverpool/ Reverse flap a superb MOY CDS for JAN 10th and a crisp black Watertown straightline in blue. Within are two letters in different hands. The first dated JAN 10th 1839 a common mistake even today as the year turns into another. The second letter correctly dated JAN 10 1840. Minor perimeter soils but A VERY IMPORTANT FIRST Day COVER – A PINNACLE DATE IN PHILATELY, and possibly a UNIQUE IRISH USE OF THIS RATE ON THIS DATE. **£525**
2. 1d Black plate 2. A lovely single lettered CE with excellent margins good to HUGE. A rich red Maltese cross. **£325**
3. Plate 2. 1d Grey Black. A superb example lettered KD. Choice margins and a vivid orange-red Maltese cross. **£325**
4. 1d Black plate 3 on unusually small wrapper, tied by a double strike of a Maltese cross in near magenta with a wonderful Cheltenham CDS for June 29 1840 in orange. Reverse a superb North Leach CDS in black for the same date. The adhesive lettered AE with margins cut good-large. Wax seal removed. A smaller cover would be difficult to find. **£550**
5. 1d Black plate 4. A wonderful part sheet marginal example lettered TD with excellent margins on other sides and a neat red Maltese cross. Exceptional quality and a Brandon certificate accompanies. **£475**
6. 1d Black plate 4. A magnificent single lettered GB. Choice margins and an orange-red Maltese cross just over one corner. **£350**



Travelling Post-office. 1900



3.



1



2



3



6



7



9



10



11



12



13



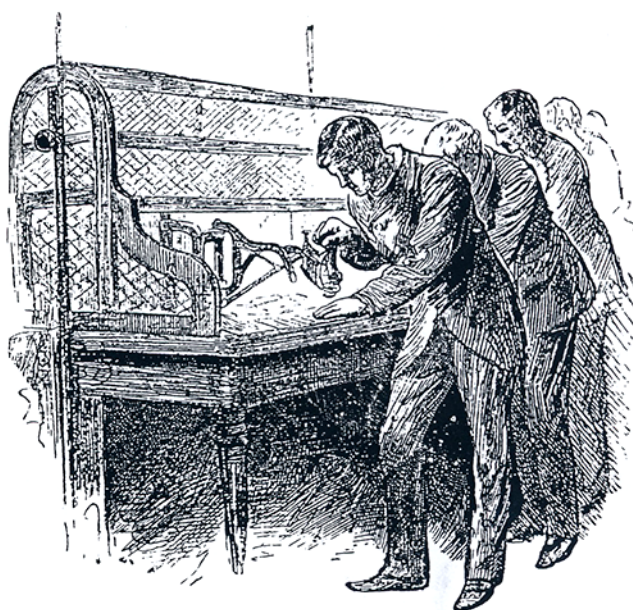
14



15



NAVVIES AT A POST OFFICE SAVINGS BANK.



STAMPING.

7. 1d Black plate 6. A FABULOUS SINGLE. With generous and outstanding margins. Lettered IE. A crisp, light and upright Maltese cross in orange-red. THE BEST. £425
8. 1d BLACK PLATE 7. SUPERB MINT. CAT £13,400. A TRULY EXCEPTIONAL EXAMPLE lettered KF. Wonderful margins. Original gum with hinge remains. Beautifully fresh. A BPA and a Brandon certificate accompanies. £5500
9. 1d Intense Black plate 7. Lettered PA with good-large margins and a vivid red Maltese cross. A superb adhesive. £350
10. PLATE TEN. Two examples on uncreased wrapper to Glasgow. Example OG with margins clear to huge. NH with good margins. Crisp black Maltese crosses to each. Wax seal removed. On reverse a wonderful GLASGOW rectangle for 12 March 1841. VERY RARE TWIN USAGE. £850
11. 1840 2d PALE BLUE PLATE 1. A magnificent example lettered BG. With good-HUGE margins and a featherlight Maltese cross in black. Lovely quality here. £475
12. 1840 2d Blue plate 1. An outstanding example lettered HJ. Wonderful margins and a light Maltese cross in black. Very fine indeed. £425
13. 1840 2d BLUE PLATE 1. A fine full margined PAIR lettered HD-HE with black Maltese crosses. A really most attractive pair. £650
14. 1840 2d Blue plate 1. Lettered EC. With full margins and a crisp partial Maltese cross in black. £325
15. 1840 2d DEEP BLUE plate 1. Lettered AG. A choice full margined example. Especially rich colour and a lightly placed Maltese cross in black. £385
16. 1840 1d Mulready envelope. A clean and fresh unused example. £140



16



17



18



19



20



21



25



22



24



26



27



29



28



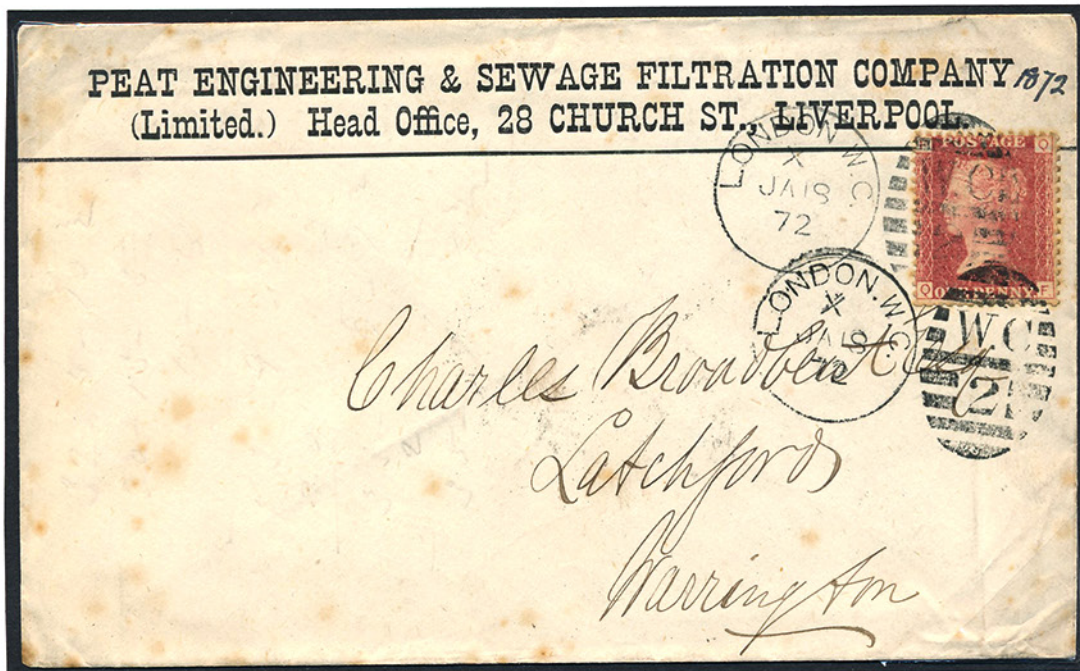
23



17. SG 8a 1d Red Brown on very blued paper plate 6 9 A 573 North Shields numeral. Pristine sheet marginal. £220
18. Number 2 in Maltese cross on 1841 1d. A lovely strike. Lettered QI with full excellent margins. £80
19. Number 8 in Maltese cross on 1841 1d Red-Brown. Lettered CI. Excellent margins and a lovely strike. £80
20. Number 9 in Maltese cross. A superb strike on 1841 1d lettered EI with full excellent margins. £85
21. A BLUE NUMERAL. 1844 1d lettered BB. Perfect margins and a lightly applied numeral cancel in blue. £115
22. 1844 1d plate 89. A GIGANTIC PAIR lettered TI-TJ. Absolutely enormous. Clear, crisp 212 numerals of Colefield. £85
23. 1854 1d Red-Brown plate 162. A large-huge margined PAIR lightly tied to small envelope by 693 numerals. Addressed to Beverley. With Beverley and Scarborough CDSs in red on reverse flap. Very fine usage. £115
24. SG 14 2d plate 3. A lovely PAIR with crisp upright Maltese crosses. Lettered FF-FG with full choice margins. A super pair. £160
25. SG 15. 1841 2d Deep Blue plate 3. Lettered QE. Fine full margins and an upright Maltese cross. £90

The Philatelists Companion. Gunston.

Chalky stamps ought to be obvious to anyone really familiar with stamp printings. The surface is denser, smoother and white, the printing brighter and sharper quality and the stamp often feels heavier and stiffer. In the case of used stamps, most early normal (IE not chalky) issues curls – sometimes almost into a drum – if damped and left to dry, the curl having the printed design outwards. Chalky stamps, on the other hand, arch strongly the other way (concave seen from the front) because as it dries the chalky coating contracts even more than the paper. The coated surface looks shiny, feels quite different, and must be treated with care. Heavily coated paper often gives a fugitive impression, and will invariably be irreparably damaged by being creased. If you have a really doubtful stamp with sheet margin attached, you are welcome to see if a piece of silver (the precious metal) will leave a black line, indicating chalk. I Strongly dislike leaving black lines on the surface of good stamps, even on the margin. In any case, there are several kinds of coating not based on chalk or china clay that do not react visibly to silver.



30



31



32



34



35



37



39



38



36



40



43



41



44



46

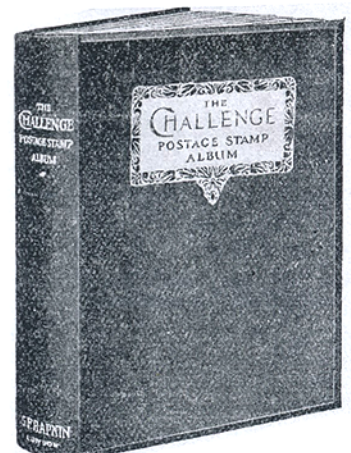


THE OLD INN

26. 1841 2d BLUE plate 4. Lettered EB with good-ENORMOUS margins and a crisp London District Duplex. Outstanding. £65
27. SG 20a 2d Blue plate 5 very well centred. Lettered DD. A featherlight numeral cancel. **£165**
28. USED IN CRIMEA. SG 24 1d plate 13. A STRIP OF THREE with wonderful strikes of the so called 'OXO' cancel. A VERY FINE STRIP! £325
29. SG C10. 1d GROSS MIS-PERF showing inscriptional detail. Very striking. £75
30. 1d RESERVE PLATE 15. An unusually fine single. A lovely BOSTON CDS. **£70**
31. SG 43 1d plate 120. A fabulous WOKINGHAM steel CDS. 1 in a 1000. **£50**
32. SG 43 1d plate 96. A sheet marginal mint BLOCK OF 6. Variously hinged, wonderfully fresh and showing inscriptional detail. **£240**
33. PEAT ENGINEERING AND SEWAGE FILTERATION. A fine advertising envelope bearing SG 43 1d plate 147 tied by 2 LONDON CDSs and Duplexes. A good Warrington CDS reverse flap. Minor soils/dents but unusual. **£40**
34. SG 43 1d plate 156. A very choice, perfectly centred MINT UNMOUNTED BLOCK OF NINE. Without any blemish. £375

The post office on D-DAY.

A serving officer said the other day that the phrase with the highest tonic value for overseas troops in 'the mail is here' and it is not surprising that the army post office authorities were intimately concerned in Second Front Plans. Said an RE (postal section) Officer to me two days after D DAY; 'Once again Britain is writing to its fighting men in France' and a huge new burden has thus fallen on the Army Postal Service. The service is already doing a fine job. It kept up delivery to the troops before they went across; and then its men went to Normandy on D DAY itself with the beach groups and by parachutes and glider with the airbourne troops. Mail was shipped over the channel on D Day itself and four days later the first Army mail from France, dispatched on D 2 was received in this country. On the way to embarkation; second front men were permitted to post their last minute mail in special boxes, and they were deliveries of re-directed letters and parcels to out troops in France on D Day within a few hours of the first landing. Three days later permanent postal station were established on the beach-heads, nearly every boat to and from the invasion coast was carrying letters.



9.



48



42



45



50



56



58



52



51



53



59



54



55



60



64



61



66



67



68



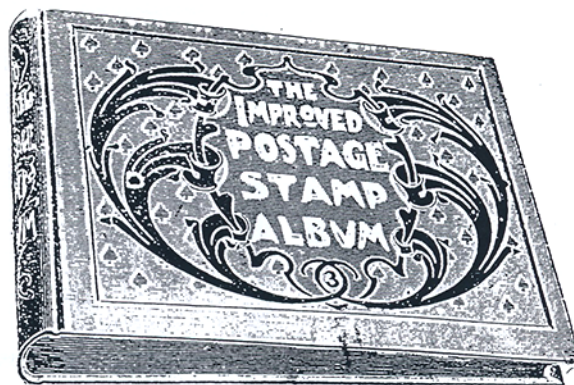
69



72

Stag at bay

Thrilling things can happen to a postman on his travels. The driver of a mail van was the victim of an unusual accident when driving through Lowther Park, on his way to Lowther Castle, the residence of Lord Lonsdale in Westmoreland. The park is well stocked with sheep ponies and red deer so the postman was driving with care especially as it was a dark morning in November. The van's headlights were on and the driver slowed down as they lit up a herd of deer. For some reason a big stag grew enraged at the sight of the red mail van and charged straight at it. The driver tried to swerve but the stag hit the van with such a crash that the vehicle was thrown completely round, and both its back tyres burst, while the stag antlers snapped off. Having displayed its temper the stag wheeled round and galloped into the darkness leaving the astonished postman to scramble out of the wreckage as best he could.



35. SG 47 2d Blue plate 14. SUPERB MINT. Fine and very fresh MM. A lovely single. **£185**
36. SG 47 2d Deep Blue plate 15. A choice MINT UNMOUNTED adhesive. Quite lovely. **£425**
37. PLATE NINE. SG 48 1/2d. A crisp steel CDS and both plate numbers are AS CLEAR AS CAN BE. The key to the set. VERY FINE INDEED. **£650**
38. PLATE NINE. SG 48 1/2d. Well centred. Lightly used with both plate numbers being perfectly clear. **£325**
39. SG 48 1/2d plate 20. A superb mint unmounted single. Imperf at right with full sheet margin showing part inscriptional detail and sheet guide lines. **£275**
40. SG 52 1 1/2d plate 3. With a crisp BIRMINGHAM steel CDS. A lovely adhesive. **£70**
41. SG 59 6d. With large-huge margined on three sides. 4th shows overlap of adjoining adhesive. A crisp London District Duplex. **£185**
42. SG 103 3d plate 8. A handsome block of 4 cancelled CONTRARY TO REGULATIONS by two very fine STAFFORD steel CDSs. **£240**
43. SG 126 5/- Rose plate 1. Perfectly centred with a partial centrally placed CDS. Outstanding quality. **£425**
44. SG 126 5/- Rose plate 1. With outstanding colour – deep and rich. A light London CDS and district duplex at **£140**
45. SG 137 £5 ORANGE. A SUPERB EXAMPLE with rich, vibrant colour and a crisp EDINBURGH steel CDS with fraction of another at base. Wonderful condition and a Royal certificate accompanies. **£2750**
46. SG 143 3d plate 20. With a corner CDS. The colour is excellent. **£65**
47. SG 157 2 1/2d plate 23 with a wonderful EDINBURGH double ringed CDS – full and upright. **£50**

The Stamp Collector 1901. 'Not lost but disappeared'

The contention that nothing is ever lost is upheld by the postal authorities. Excluding stolen letters, they declare that the agency for the collection and distribution of letters is so perfect that to lose a letter altogether is an impossibility. In support of this they cited some years ago the following curious case: A gentleman of London betrothed to a young lady living in Sheffield had, in conformity with an arrangement previously arrived at, secured lodging at Great Yarmouth for his lady love and her parents. He was at the station when the train he expected them to travel by arrived, but they were not there. He spent the whole of the day at the station and wired twice as to whether they had left Sheffield or not. Receiving no reply he started next for Sheffield, only to find on reaching the house that they had gone to Blackpool. After he had cooled down he went to Blackpool, where he received a hearty welcome from the lady's family, who were greatly astonished on learning that he had never received the letter in which they announced their change of plans, with the inclosure from the lady begging her lover to leave Great Yarmouth without a moment's delay. Years elapsed before this missing letter – which might have led to the separation of two loving hearts – turned up. As the post office put it; "Although the letter temporarily disappeared, it was not lost". Fifteen years after her marriage the letter was delivered. It had somehow got into a niche in a mail cart and remained there till the vehicle, having got past service, was condemned to be broken up.



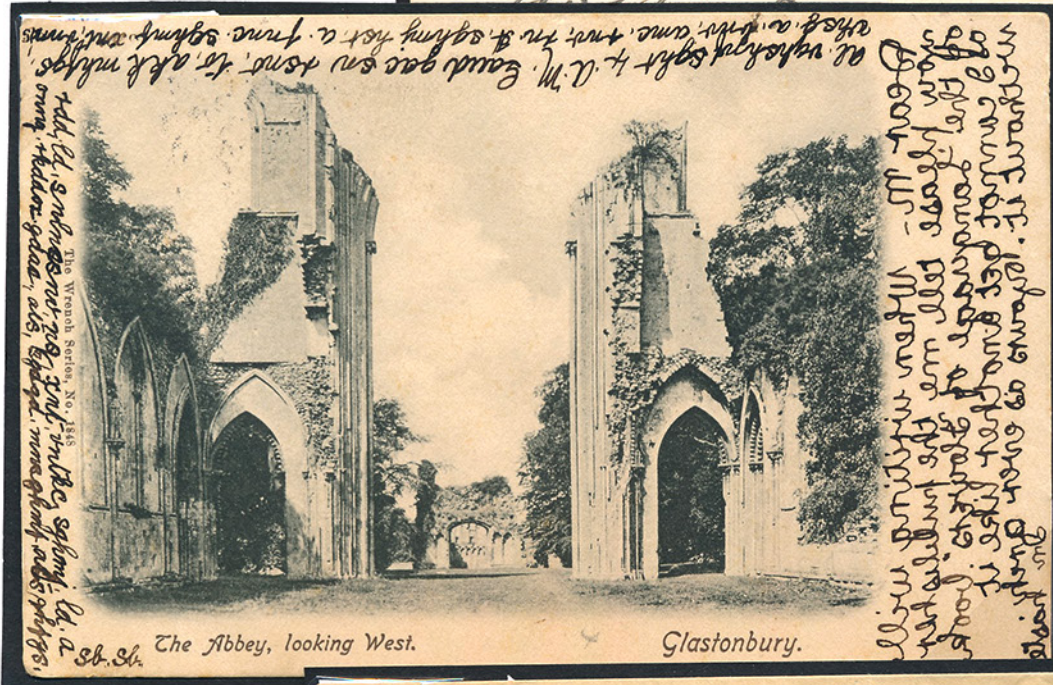
73



74



65



71



79



76



70



48. SG 158 3d plate 20. VFU a crisp steel CDS with fine full colour at **£90**
49. SG 158 3d Rose plate 21 with a brilliant SNDGATE steel CDS. **£130**
50. SG 158 3d plate 21. Perfectly centred and VFU a crisp steel CDS. **£70**
51. SG 159 3d on 3d. Perfectly centred with a choice COLEFIELD steel CDs perfectly struck. Exceptional. **£140**
52. SG 160 4d plate 17. Tied to clean entire wrapper by a London CDs and duplex. To Buenos Aires 'via Bordeause'. A good Kleinwort Cohen and Co CDS in blue. Very tidy. **£130**
53. SG 162 6d on 6d. Superb mint. With lightest hinge remain, perfect centring and outstanding colour. Very fine. **£250**
54. SG 162 6d on 6d. A VFU example with a crisp CHELMSFORD steel CDS. With RPS certificate. **£115**
55. SG 163 1/- plate 13. A magnificent CULLOMPTON steel CDS. In all respects exceptional. **£200**
56. SG 178 2/6d Lilac. With a lovely crisp CLEVEDON steel CDS. **£95**
57. SG 180 5/- with a glorious AYE steel CDS for April 8 1888. A very early date. Outstanding. **£180**
58. SG 183 10/- Ultramarine. With a crisp oval cancel. With perfect colour and freshness. **£175**
59. SG 183 10/-. A lovely example with a crisp double ringed CDS for Christmas Eve 1898. **£170**
60. SG 185 £1 BROWN-LILAC. Beautifully fresh a lightly placed Charing Cross oval. A beautiful example. **£1400**
61. SG 185 £1 BROWN-LILAC. A neatly struck THREADNEEDLE ST steel CDS. The colour could not be better. **£900**
62. SG 189 2d Lilac. Flawless colour. A choice CASTLE DOUGLAS steel CDS. Superb quality. **£75**
63. SG 194 6d. A fabulous CARMARTHEN steel CDS in a flawless adhesive. The best. **£200**
64. SG 201 2 1/2d. A little gem. A superb BROUGHTY FERRY CDS. **£10**
65. 'PAQUEBOT'. A very fine strike together with a GIBRALTA CDS and numeral on SG 201. Letter within on 'Orient Line' paper with 'RMS CUZCO'. Addressed to Zurich. **£45**
66. SG 206 4 1/2d. With a very fine and upright STRATHAVEN steel CDS. Magnificent strike. **£50**



77



78



81



80



82



83



84



85



86



90



91



92



93



94



67. SG 207 5d Die 1. A superb well centred single. With a crisp SOUTH KENSINGTON steel CDS. Very choice. £110
68. SG 212 £1 GREEN. Excellent colour with Lombard Street oval cancels. A clean and attractive example. £265
69. SG 226. 2d Grey Green and Carmine Red. M11 (4). With a crisp LANGHOLM steel CDS. **£35**
70. 1902 2d and 2 1/2d on printed envelope. Registered to Naples. Opening fault but nice usage. With east cheap registered ovals. **£40**
71. 1904 MIRROR WRITING. A picture postcard of Glastonbury Abbey with, at left side a message that can only be read by means of a mirror at top and other side might be either backward writing or written in a foreign language. MOST UNUSUAL. £30
72. SG 257 1/- Dull Green and Carmine. M45 (1). A glorious WEYBRIDGE Thimble CDS. **£50**
73. SG 243a. 5d Slate Purple and Ultramarine. A very choice and complete ST MONANCE steel CDs. A little gem. £25
74. SG 260 2/6d. A quite lovely single with a JERSEY steel CDS. Very fine. £110
75. SG 260 2/6d. A crisp steel CDS. With lovely full colour. **£75**
76. SG 262 2/6d Slate-Purple. Lovely deep rich colour and a crisp corner oval. **£80**
77. SG 263 5/- Bright Carmine. Perfectly centred a complete and featherlight SUTTON steel CDS. **£95**
78. SG 266 £1 Dull-Blue Green. Perfect colour and freshness and a light upright steel CDS. An outstanding example. £425
79. SG 278 3d Deep Bright Orange. M26 (2). A crisp upright PONDERS END steel CDS. **£70**
80. SG 309 10d. Lovely rich colours and a crisp STRATTON steel CDS. **£55**
81. SG 311 10d Dull Reddish Purple and Carmine. A pristine UNMOUNTED (mounted in margin only) bottom corner marginal single with date cuts and plate dot. Lovely piece. **£90**
82. SG 313 1/- Green and Bright Scarlet. M47 (3). Lovely rich colours and a LEAMINGTON SPA CDS. **£45**
83. SG 314 1/- Green and Carmine M47(5). With a lovely, upright BLYTH steel CDS. **£40**

The first daily delivery at the Post Office 1850

Presently the post-runner, with his wallet slung upon his back and a rustic walking-stick in his hand, appears in the distance. Jogging along with that steady swinging stride which is so characteristic of his class. The visitors began to close around the post office; in a few minutes the runner steps into it; throws down his wallet of treasures on the counter, removes his faded and dusty hat, and with his coloured cotton handkerchief wipes the sweat from his soiled and heated face. Meanwhile the attention of the post mistress is given to the contents of the bag; and as the expectant receivers of letters crowd in at or around the desk a few who have been unable to approach sufficiently near derive what consolation they can from eyeing the operations through the shop window, or by vainly endeavouring to catch an early glimpse of some well known superscription as the letters pass by one by one through the hands of the postmistress.



95



96



97



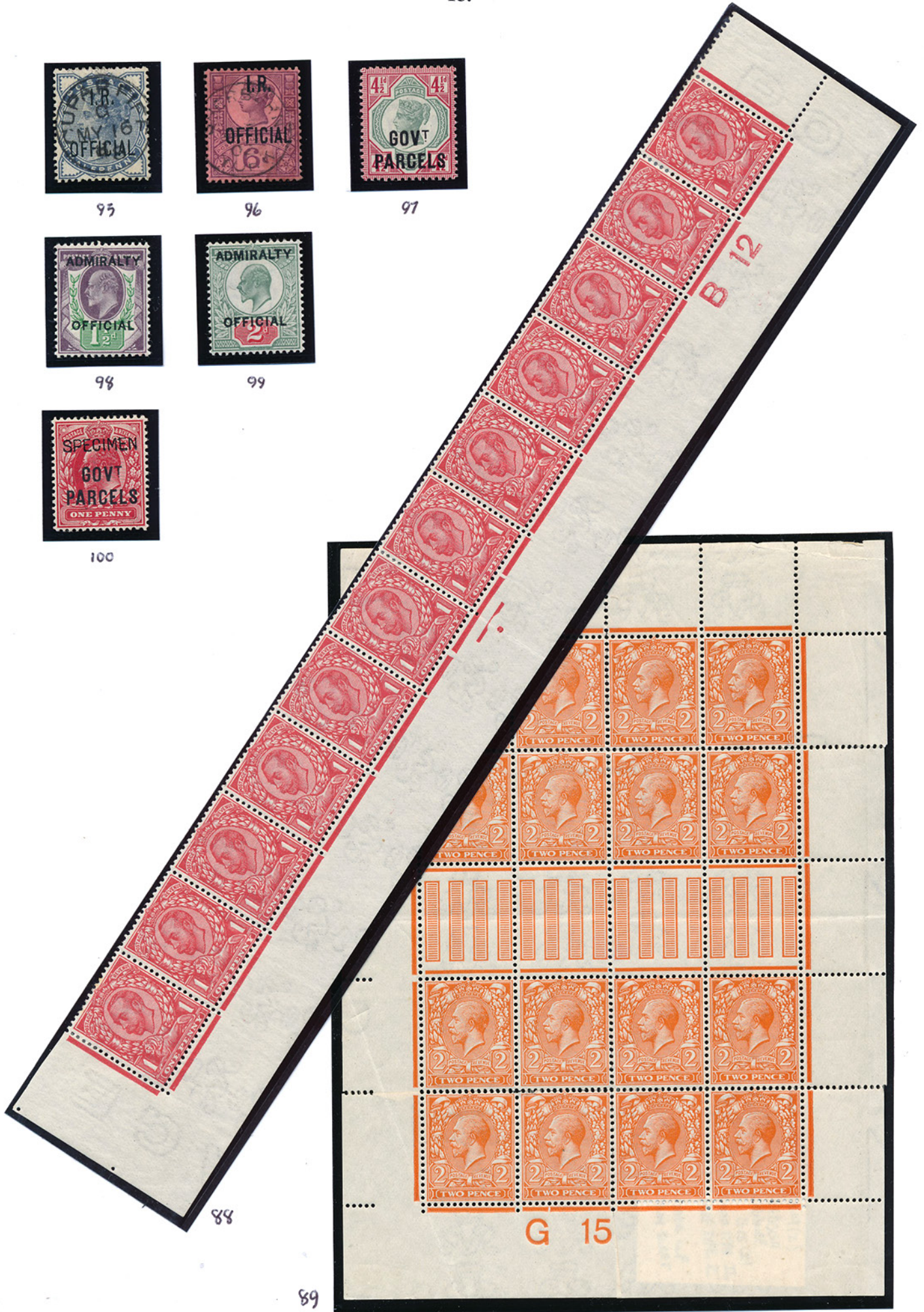
98



99



100



88

89

- 84. SG 317 2/6d. An outstanding adhesive. A lightly placed CDS. **£110**
- 85. SG 317 2/6d Dark Purple. Gloriously rich colour. A crisp THREADNEEDLE STREET oval. **£95**
- 86. SG 324 1/2d VERY DEEP GREEN N2(7). A fine example tied to piece by a DARTMOUTH CDS. In exceptionally deep shade and a Royal certificate. **£140**
- 87. SG 344 1/2d Green Die 2. N5(1). A superb mint complete bottom of sheet row of 21 showing control number B12. Light hinges to 6 adhesives. A very striking piece. **£115**
- 88. SG 345 1d Scarlet N12(1). A pristine complete sheet marginal strip of 12 showing control B12. Hinge remains to 5 adhesives. A stunning piece. **£110**

The Post Office and its Story. Bennett. Lost property - and letters. 1906

A watch and chain, and several articles of personal jewellery such as might fittingly adorn the person of a gentleman in easy circumstances, were found in a pillar box, and the wherefore remained for some time a mystery. Eventually a nurse wrote up to Head Office about them, and it then appeared that the articles belonged to a poor fellow of weak intellect who, on this particular day, escaped from his keeper, and was subsequently found wandering about in a state of partial undress. A small bottle of white powder was found loose in the post some years ago. It presented no uncommon feature, and was placed with a number of similar and more or less valuable articles to await inquiry. There was some astonishment when, a few days later an inquiry came from a professor at an English college describing the contents of a phial as a compound of radium, and stating that the insignificant white powder was almost priceless.

- 89. SG 367 2d Reddish Orange Die 1 N19(2). A SUPERB MINATURE SHEET. A full sheet has had the 4 corners and interpane pillars removed and the corner blocks of 4 have been brought together and reconstructed to include the control number G15. This reconstruction allows the important parts of a complete sheet to be displayed in a format that fits the album page. A popular method amongst collectors of the 1930s. **£185**
- 90. SG 407 2/6d Grey Brown. Showing excellent plate wear. PRISTINE MINT UNMOUNTED. Very choice indeed. **£525**
- 91. SG 451 5/- bright Rose-Red. A lovely fresh LTLY MM example. **£80**
- 92. SG 01 1/2d DEEP GREEN IR OFFICIAL. A crisp and upright RFICHMOND SURREY steel CDS. A wonderful shade. **£50**
- 93. SG 02 1/2d Pale Green IR OFFICIAL. A crisp and complete GREENOCK steel CDS. **£45**
- 94. SG 04 6d IR OFFICIAL. With a crisp GLOUCESTER steel CDS. **£70**
- 95. SG 05. 1/2d Slate Blue IR OFFICIAL. A complete and upright CUPER FIFE steel CDS. Exceptional. **£40**
- 96. SG 018 6d IR OFFICIAL. A crisp, light and upright SHERBURN steel CDS. Very fine. **£110**
- 97. SG 071 4 1/2d GOVT PARCELS. Very lightest hinge trace. Outstanding colours. **£220**
- 98. SG 0103 1 1/2d ADMIRALTY OFFICIAL. Pristine untouched MINT UNMOUNTED. Very choice. **£275**
- 99. SG 0104 2d ADMIRALTY OFFICIAL. Pristine untouched MINT UNMOUNTED. Outstanding quality. **£285**
- 100. SG 074 1d GOVT PARCELS. Superb mint and OVPTD SPECIMEN. Pristine MM. Rarer than catalogue value suggests. **£240**.