

SOME EARLY BRITISH ADHESIVES.



8



14



15



17



30



3



29



40768

98



92



94



40771

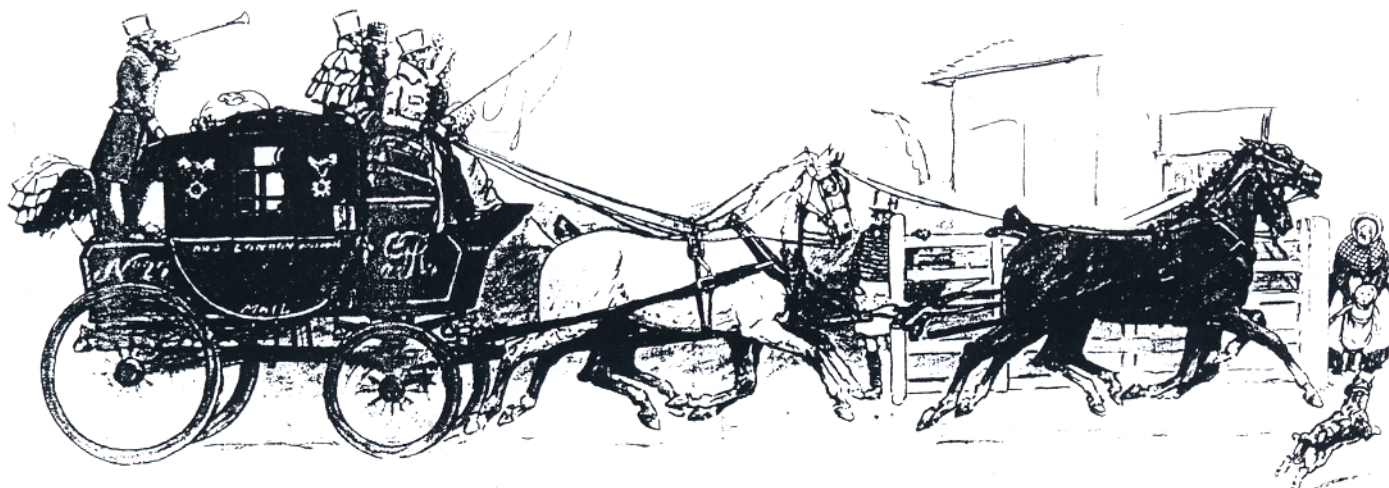
99

Which I hope you will enjoy.

From Foot Messenger to Air Mail

Letters for the rich, letters from the poor.
 The shop at the corner and the girl next door
 Letters of thanks, letters from banks
 Letters of joy from the girl and boy
 Receipted bills and invitations
 To inspect stock and visit relations
 Letters with holiday snips to enlarge in
 Letters with faces scrawled on the margin
 Letters from cousins, uncles and aunts
 Letters to Scotland from the South of France
 Clear stupid short and long
 The typed and the printed and the spelt all wrong.

1. 1805 Wrapper. A fine THETFORD 81 mileage mark and a good large crowned FREE CDS. **£60**
2. ROWLAND HILL. A HAND WRITTEN AND SIGNED LETTER. Written from his home in Hampstead and dated 17th April. "My dear sit, Captain Galton wishes to defer his visit to the Political Economy Club till the June meeting. If I do not hear to the contrary I will, if you please assume that I may use your name for that meeting. Faithfully Yours, Rowland Hill". The recipient of the letter "Professor Rogers" (Thorold Rogers, a Liberal Politician). Hill was one of the founders of the Political Economy club and became a member in 1844. Captain Douglas Galton was secretary to the Board of Trade. Of Hills famous postal reforms, Galton "Entirely approved of these plans" (See 'Life of Sire Rowland Hill). This letter must have been written pre 1850 as about this time, Hill added a special Hampstead embossed crest to his writing paper. Neatly folded twice and in a clear, fine, quick hand. Wonderfully signed at foot. A SUPERB CENTREPIECE TO THE COLLECTION. **£625**
3. MAY 9th 1840. A fine entire letter bearing 1d grey – black plate 1a. Lettered PH with 4 excellent margins and tied by a crisp red maltese cross. Reverse flap shows a wonderfully clear CDS for MAY 9 1840. Lovely early date. Displays perfectly. **£1500**
4. Plate 1a. May 16th 1840. WORLDS FIRST STAMP COLLECTOR. Entire letter bearing a very fine adhesive lettered NJ. An early impression with excellent margins and beautifully tied by an orange red maltese cross. A very good 'T.P FINCHLEY' in black and on reverse a superb PD octagon for May 16th in the same ink as the cross. Written on Mourning paper and addressed to Fenchurch St. The letter within written by a school boy to his father is both fascinating and important in Philatelic terms (see extract detail) as the boy asks his father for more examples of 'the new stamps' at this early time they were referred to as labels. Some soils to the folds but an early date just 10 days after first use. Could the writer of the letter be the worlds first stamp collector?. **£950**





5



6



7



9



Hampstead, h. W.
17th April

My dear Sir,

Capt Galton wishes to defer his visit to the Pol. ec. Club till the June meeting. If I do not hear to the contrary, I will, if you please, assume that I may use your house for that meeting -

Faithfully yours
Rowland Hill,

Trapper Regus.

2



10



11

Thetford December Nineteen
1865

THE T. F. O. R. D.

L. P. Adams Esq [S]

Lincoln's Inn
London

R. Adams

4



12

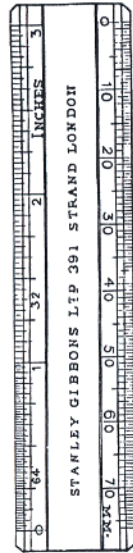


13

IVORY POCKET RULE.

For Measuring Stamps, Surcharges, &c.

Most useful for detecting Forged Surcharges.



IVORY RULE.

* *
One side divided
into inches,
and subdivided
up to 1/64 inches.

The other side
divided
into Millimetres
and
Centimetres.

* *
3/6.

Post-free, penny extra.
Abroad, fourpence extra.

Supplied in
Neat Case for Pocket.

* *



CASE TO CARRY RULE
IN WAISTCOAT POCKET.

Photographs of the Two Rarest Stamps in the World, the
1d. and 2d. "Post Office" Mauritius of 1847.

This pair was purchased by STANLEY GIBBONS, Ltd., for £680 cash.

Price 1/- post-free, on neat gilt and black card mount.

5. Plate 1a showing very slight signs of plate wear. A wonderful adhesive lettered RJ. Outstanding well cut margins and a light full and upright Maltese cross in red. **£385**
6. 1d grey black plate 1a showing moderate plate wear. A pristine single lettered EL. Very choice well cut margins. Cancelled by a light, crisp central and upright Maltese cross in full red. **£425**
7. 1d grey black plate 1b. Lettered KD with 4 large margins and a crisp upright maltese cross in black **£325**
8. A STUNNING ADHESIVE. 1d grey black plate 2. Lettered QC with 4 ENORMOUS MARGINS and a pristine strike of a Maltese cross in orange – red. An amazing stamp. **£575**
9. 1d grey black plate 2. With good – HUGE margins. Lettered GE. A vivid red maltese cross. Excellent quality. **£350**
10. 1d black plate 2. A choice well cut single lettered HE with a crisp and lightly placed Maltese cross in red. **£350**
11. BLACK PLATE TWO 1d in red – brown. A fine example lettered QG. Lovely margins and a crisp maltese cross. Not easy. **£165**
12. 1d very grey black plate 6. With choice, squares cut margins and lettered QL with a crisp lightly placed maltese cross in black. **£350**



16



18



21



22



Extract from the above letter written by a schoolboy at Finchley to his father at Fenchurch Street, London:-

'I think the new stamps are very trumpery, it was a curious one which you sent me. Tell me whether you use them in the office. I would be very glad to have some if you are going to send a parcel down. A boy has given me a stamp to put on this letter.'

The letter is backstamped 'MY 16 1840'
(Was he the first Stamp Collector?)



19



23



25



26



28



31



27



You will tell your colleagues that the bow must be kept uppermost?

Constructing a stamp plate

This is a method of reproducing engraving devised many years ago by Jacob Perkins an inventive American, who may be considered the father of the present method of duplicating bank-notes and stamp plates. It consists of making a soft reversed duplicate or mould of the original engraving by rolling a soft annealed steel roll upon it in the transfer press. Being accurately guided and held by the mechanism of this press continued rolling under high pressure forces this soft steel of the roll into the engraved lines of original design and forms an exact counterpart, in relief of it. This being hardened, is used to duplicate the engraving by the same process upon a soft steel plate which it will do a great number of times before wearing out reserving the original engraving, or die as it is called for making additional rolls. The original engraving is never printed from except to make what it is known as die proofs.

13. BLACK PLATE EIGHT. 1d red – brown lettered LF. A superbly struck Maltese cross. **£95**
14. PLATE 9. 1d grey black. Glorious margins, perfectly cut. Lettered BK with a light upright and centrally placed Maltese cross in black. Exceptional. **£475**
15. 1840 2d blue plate 1. A VERY STRIKING BLOCK OF FOUR. NB – OC. Beautifully cancelled by crisp light and upright Maltese crosses in red. Originally with margins on three sides, the lower margin has been added also at upper left with additions to design. Trace of creasing to upper pair but VISUALLY STUNNING. Blocks from this issue are rarely seen and this is such an attractive multiple. **£3850**
16. 1840 2d blue plate 1. A lovely bright single lettered CK with a featherlight and almost complete Maltese cross in black. **£450**
17. PLATE 2 CANCELLED IN RED. 1840 2d deep full blue. A magnificent single lettered KB with excellent margins and a crisp upright cross in orange – red. **£600**
18. 1840 2d deep full blue plate 2. Lettered FE. Perfectly cut margins. A featherlight Maltese cross in black set clear of Queens features. OUTSTANDING. **£485**
19. UPDATED MULREADY LETTERSHEET. Showing a crisp maltese cross and a clear upright ULVERSTONE CDS, both in orange with 'To Pay 2'. Reverse shows a 'A05' inspectors mark, also in orange. Light soils but very clean and tidy at face. The lettersheet has been refolded by the sender to make it smaller. Perhaps to accommodate an enclosure. Hence the uprate. **£425**
20. 1d MULREADY ADVERTISING LETTERSHEET to Portman Square. CANCELLED CONTRARY TO REGULATIONS with a black maltese cross to right of centre. A fine Reading CDS for April 18 1841. Within an advertisement for THE BRITISH & COLONIAL TRUST & ASSURANCE COMPANY. The Mulready is FINE UNCREASED and in lovely fresh condition. **£325**
21. Number 3 in maltese cross. 1841 1d plate 35 and lettered IA. Wonderfully cut margins and a perfect strike. **£120**
22. Number 10 in Maltese cross on 1841 1d lettered LB. with excellent margins and a very good strike. **£140**
23. Number 12 in maltese cross. A fine, clear strike on 1841 1d lettered TB. With 4 excellent margins. A fine end to the set. **£180**

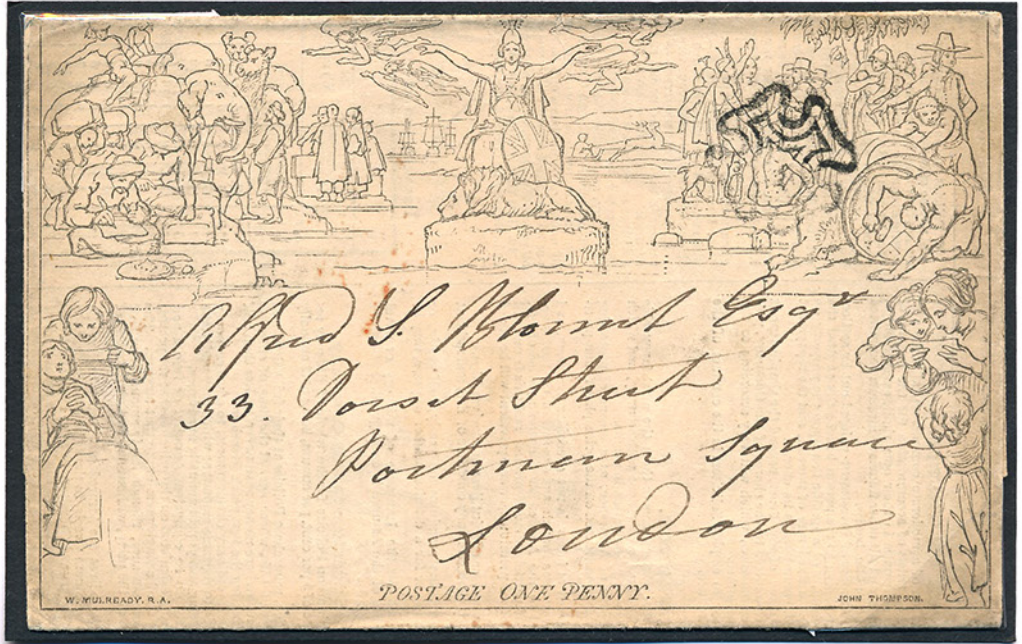
7.



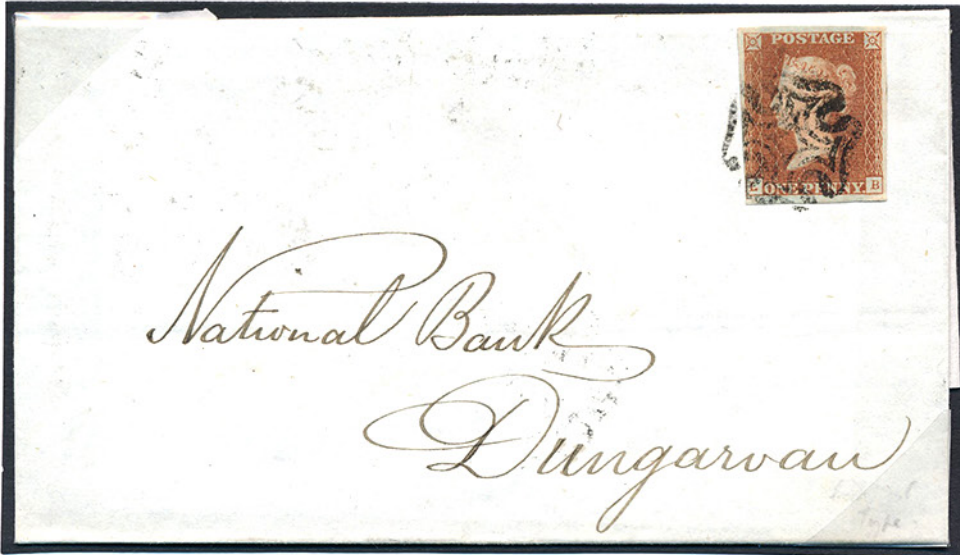
32



33



20



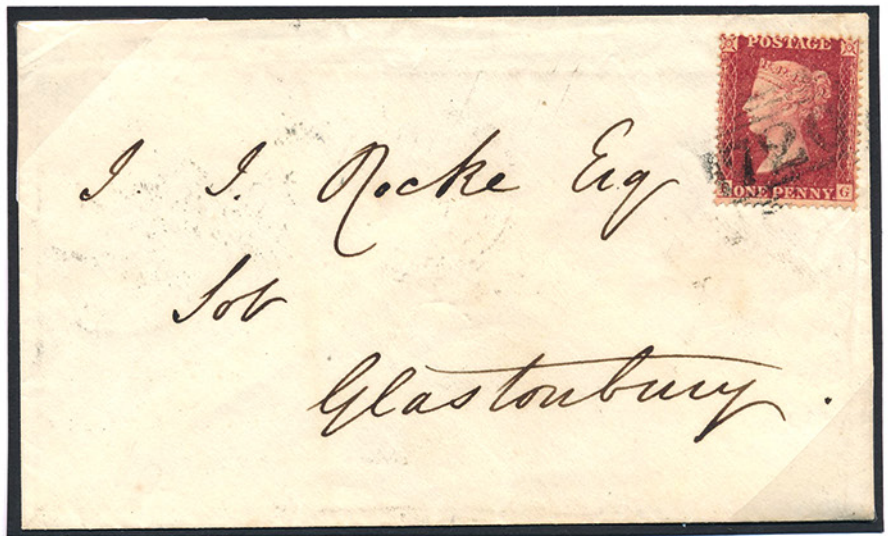
24



37



39




36



35



38



**2 GUINEAS
REWARD.**

WHEREAS some evil-disposed PERSON or PERSONS, did,
on the Night of the 13th instant, between the hours of Eleven
and Twelve o'Clock, put

**A Lighted Cracker
INTO THE LETTER-BOX,**
BELONGING TO THE
Post-Office of Leamington,

A REWARD of TWO GUINEAS will be given on conviction,
to any one who will give Information (at the POST-OFFICE,)
of the Person or Persons who committed the Offence, that he
or they may be Punished according to the utmost rigour of
the Law.

(By Command of the Post-Master-General.)
B. CHURCHILL, Surveyor,
G. P. O.
Leamington Spa, Aug. 16, 1824.

ROSE & LAPWORTH, PRINTERS, CLEMENS STREET, LEAMINGTON.

H.M. Postmaster General

Reward notice for the apprehension of the
person who threw a lighted cracker into the
letter box of the Leamington post office, 1824.

24. 1842 CORK MALTESE CROSS TYPE 1 SG 8 1d red (LB) to Dungarvan. An outer wrapper franked with a four margin SG 8 1d red (LB) tied by a very fine strike of the Type 1 Cork maltese cross sent OC 28 1842 to Dungarvan, via Waterford, with the three town circulars on back. The three strikes are all very fine. **£110**
25. AN IRISH DIAMOND IN BLUE. A superb strike of the 317 numeral of MACROON in CORK on a choice 1844 1d lettered CK. Beautifully cut. Very fine. **£110**
26. SG 8 1d A GIANT lettered IC with a lightly placed 499 numeral of Liverpool. With 4 gigantic margins. **£45**
27. SG 14 1841 2d blue plate 3. SUPERB MINT. Lettered TC. Wonderfully cut with a clean reverse and large part original gum. EXCEPTIONALLY FRESH. Magnificent appearance. **£900**
28. SG 14 2d plate 3. A lovely pair with crisp upright Maltese crosses lettered FF – FG. With full choice margins. A super pair. **£160**
29. SG 15 1841 2d deep blue plate 3. A SUPERB FULL MARGINED STRIP OF FIVE. Cancelled by lovely upright Maltese crosses. Stamp AH with scissor cut within the margin, but a very striking multiple – especially with upright maltese crosses. Rare so fine. **£475**
30. 1841 2d blue cancelled in red. A superb example lettered JC. From plate 4 with full margins cut good – HUGE. A corner Irish diamond cancel in dull red. Only a handful of this variety have been recorded. A Brandon certificate accompanies. A Great Line Engraved rarity. **£2400**



34



40



43



41



45



46



42



47



49



50



51



44



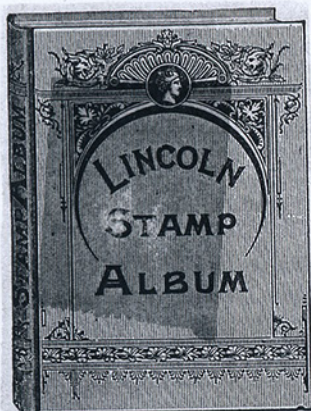
52



54



31. SG 15 2d deep blue plate 4. A pair with margins cut good – ENORMOUS. Cancelled by numeral cancels. The colour is rich and deep. **£150**
32. USED IN FRANCE. SG 29 1d with a MORLAIX (Brittany) CDS. A lovely crisp strike. **£50**
33. SG 34 2d blue plate 5. With a light crisp CDS. **£50**
34. 1863 reprint of the Charles whiting essay with 'PAID' in rose, showing the characteristic marks at the base of the neck. Very fine. A Royal certificate accompanies. **£240**
35. SG 29 1d plate 33. A pair with a complete Liverpool spoon cancel very nicely struck. **£45**
36. SG 36 1d. A fine example. Tied to clean envelope to Glastonbury by a light 720 numeral of Somerton. Reverse:- fine Taunton, Glastonbury, Somerton and Bath CDSs. Wonderful strikes. **£85**
37. SG 38 1d pale red. Plate 57. A lovely block of six with lightly placed 852 numerals of Welshpool. A most attractive multiple. **£115**
38. SG 38 1d. A pair with a single 685 numeral of Wilton. Pretty. **£45**
39. SG 43 1d plate 170. A pristine mint unmounted vertical strip of 4. With full inscripational detail and wonderful centring. **£160**
40. SG 47 2d deep blue plate 15. A choice mint unmounted adhesive. Quite lovely. **£350**
41. SG 48 1/2d plate 4. A corner CDS leaves profile untouched. **£45**
42. SG 48 1/2d plate 10. VFU a crisp GLAGGOW steel CDS. **£45**
43. SG 48 1/2d plate 15. A superb mint block of six with 5 adhesives being mint unmounted. **£275**
44. SG 57 10d brown. A very choice full margined example with a crisp, light, upright and complete 742 numeral of Stamford. Certainly rare this fine. **£650**
45. SG 80 4d pale red. Very well centred and a light but clear London steel CDS> Difficult on this issue. **£120**
46. SG 90 1/- green. SUPERB MINT. Mounted mint with large part original gum. A rarity as such. **£900**
47. SG 97 6d lilac. A superbly light and complete MALTA steel CDS. Very fine indeed. **£220**



Ta-Ta-Creek

A community 10 miles south of the Skookumchuk ('Good Water') River, British Columbia, Canada.

Said to have derived its name from the derisive farewell of 'Red' McLeod, a badman of the pioneer days, as he escaped from a sheriff's custody.





53



62



55



56



57



58



59



60



67



61



63



64



65



66

March 1979

In March 1979, workmen at Ballymscra, County Antrim, replaced a telegraph pole upon which was fixed a post box. The workmen did not have the official keys needed to release the clips that fastened the box to the pole, so they raised it over the top of the old one and then slipped it down the new one. The new pole turned out to be thicker than the old one and the post box came to rest nine feet above the ground. It remained in this position for three weeks during which time some post still managed to get through. 'I am told' said Mr Ernie Dermott, the post master, 'that someone, provided a step ladder'.

FORBIDDEN ITEMS

Each foreign country has its own rules governing what may and may not enter its borders through the post. Quite a number forbid the importing of live bees, silkworms, and playing cards. Several states in South America bar police whistles. Others will not admit ostrich feathers, unless made up into boas or hats. The United States, on the other hand, bans all feather except ostrich feathers. It is forbidden to send uniforms to some of the British possession unless the person to whom they are addressed can prove that he has the right to wear them. Among the items barred by the Dutch postal authorities are 'gooseberry bushes or parts thereof', while Tunis positively refuses to admit fresh truffles. The gold coast will have nothing to do with handcuffs or brass knuckle dusters; Ecuador objects to feeding-bottles having rubber or glass tubes; and the authorities in Czechoslovakia will not allow Christmas crackers to enter the country. Parcels coming into this country from abroad have to be examined for dutiable contents. The post office has a working arrangement with the Customs authorities for the collection of the duty, and there is a huge room at Mount Pleasant, filled with long counters, at which incoming parcels are opened and their contents checked through by men who have all the informations concerning tariffs at their finger-ends.

48. SG 101 1/- green plate 4. Tied to a lovely envelope to NEW YORK CITY by a London duplex with a LONDON WC CDS alongside. Very lightly applied . A good New York 'PAID' in red with a nice inspectors mark above. A difficult adhesive to find on cover. £185
49. SG 103 3d plate 6. With a crisp YORK ST MANCHESTER steel CDS **£60**
50. SG 127 5/- PALE ROSE plate 2. With a super upright 38 numeral of AYLESBURY. Wonderful strike. £185
51. SG 134 5/- rose plate 4. CAT £3250. Superbly used a light, crisp WEST MAITLAND ST CDS for MARCH 24 1884. A crease but a very handsome adhesive for **£425**
52. SG 135 10/- greenish – grey. Perfectly centred and lightly used with duplex cancels. The colour is wonderful **£975**
53. A RED REGISTERED OVAL and a Scottish numeral in black on SG 141 2 1/2d plate 9. Both cancels are clear and crisp. **£50**
54. SG 142 2 1/2d blue plate 17. Unmounted mint showing sheet current number in attached margin. Minor tone OVPTED specimen. **£160**
55. SG 142 2 1/2d plate 20. SUPERB MINT. Wonderfully centred with lightest hinge trace. **£240**
56. SG 143 3d plate 19. VFU with a crisp corner IPSWICH steel CDS. **£55**
57. SG 143 3d rose plate 20. A crisp and upright ASTON ON CLUN steel CDS. Lovely quality. £90
58. SG 144 3d pale rose plate 20. With a crisp CURREN open town steel CDS > **£90**
59. SG 147 6d plate 14. Superb mint. Perfectly centred and lightly hinged. AS fresh as can be. £225
60. SG 157 2 1/2d plate 23. With wonderful EDINBURGH double ringed CDS – full and upright. **£50**
61. SG 158 3d plate 21. Perfectly centred and VFU a crisp steel CDS > **£70**
62. SG 159 & 162 3d and 6d. Tied to separate pieces by the UNIFORM PENNY POSTAGE JUBILEE special commemorative cancels for 2 July 1890. Crease to one piece clear of adhesive. A wonderful matched pair. **£185**
63. SG 162 6d on 6d. VFU indeed. A featherlight LONDON steel CDS for **£120**
64. SG 163 1/- plate 13. A lovely single with a crisp steel CDS. **£95**
65. SG 163 1/- orange – brown plate 14. With a pin sharp GREENOCK steel CDS. A lovely strike. **£165**



69



71



72



68



70



73



74



75



76



77



78



81

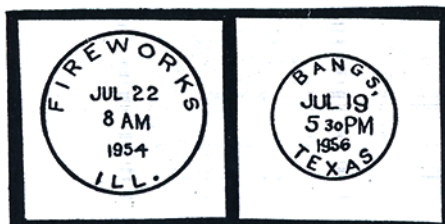


83

Plot Night postmarks

Among postal place-names with a Gunpowder Plot connection are several bearing the name Guy and one, in Kentucky, named Squib.

Fireworks (Illinois, U.S.A.) is a branch office of East Saint Louis; Bangs is the name of a community in Brown county, Texas.



66. SG 169 5d INDIGO. VFU indeed. A crisp corner LOTHBURY steel CDS. **£65**
67. 1890 UNIFORM PENNY POSTAGE JUBILEE. A super UPU POSTCARD. Without writing. Cancelled by a very fine strike of the Commemorative postmark. Outstanding condition. **£65**
68. SG 172 1d. Three control strips. From the corner of the sheet. All fine MM. Minor gum creasing here and there but a very fresh trio. The jubilee line on Control W shows plate cracking below last stamp. **£60**
69. SG 183 10/- ultramarine. A crisp BRADFORD steel CDS on a perfectly centred single. **£325**
70. SG 183 10/-. A lovely example with a crisp double ringed CDS for Christmas eve 1898. **£170**
71. SG 191 3d lilac. A fabulous Liverpool CDS. A gem of a stamp. **£175**
72. SG 193 5d dull green. A lovely fresh single with a corner steel CDS. **£110**
73. SG 194 6d. with outstanding colour and a lovely HINTON CROSS STEEL CDS FOR April 9 1886. **£110**
74. SG 196 1/- with excellent colour and a crisp and upright LIVERPOOL registered oval. **£75**
75. SG 200 2d grey – green and carmine. A 'Post office' perfect mint unmounted corner of sheet block of 4. **£150**
76. SG 201 2 1/2d. Tied to a perfectly clean envelope to BASEL, SWITZERLAND by a crisp upright HARBORNE CDS. A choice BASEL CDS flap. OUTSTANDNG. **£75**
77. SG 209 9d with a crisp SOUTHPORT steel CDS. Very fine. **£30**
78. SG 214 1/- with a crisp WORCESTER steel CDS. Vibrant colours. **£55**
79. SG 215 1/2d VERY DEEP BLUE – GREEN. M1 (3) variety. A superb CONTROL B PAIR with a crisp MALDON CDS. An outstanding sub shade. **£90**
80. SG 245 6d pale dull purple. A superb mint PANE BLOCK OF FOUR with interpane pillars attached. With two adhesive untouched mint unmounted. **£235**
81. SG M45 1/- dull green and bright carmine. (F). Barest hinge trace. A fine unlisted shade. A Hendon certificate. **£85**

ANY OLD IRON.

Age lends value as well as charm, to many objects of the Victorian era. The classic Victorian pillar box was the hexagonal shape with 'acorn' top designed by J Penfold which model was standard from 1866-1979, seventy six which are still in service. In 1966 the Post Office would sell obsolete Penfolds for their scrap value of £4 each. As the craze for collecting Victorian grew, waiting lists of applicants for old pillar boxes were drawn up and the price rose accordingly. By 1976 the Post Office were inviting 'offers' in excess of £500 for a Penfold, and two years later the asking price was around £700.



95



82



79



83



84



85



89



86



87



80



96



91



97



93



100



90

82. SG 260 2/6d. A crisp central District office CDS. Crisp and clear. **£90**
83. SG 260 2/6d with a perfectly struck CHELTENHAM steel CDS. A lovely strike. **£85**
84. SG 262 2/6d slate – purple chalky paper . M49 (3). A superb corner Shaftesbury Ave CDS lightly placed. Stunning colour here. **£140**
85. SG 262 2/6d with a very fine and complete THREADNEEDLE ST registered oval. A lovely crisp strike. **£70**
86. SG 263 5/- bright carmine. A very fine and upright WIGAN CDS. **£125**
87. SG 263 5/- bright carmine. Perfectly centred a complete and featherlight SUTTON steel CDS. **£95**
88. SG 303 6d deep plum (chalk surfaced paper). Very lightly used indeed. **£45**
89. SG 307 9d with crisp MEIFORD (Powys) CDS. Very fine. **£40**
90. SG 318 5/- CARMINE. A superb mint unmounted corner of sheet single showing printers dot and date cuts. Hinge remains at lower margin edge. Very fine and attractive. **£725**
91. SG 318 5/- with a very light and complete BRIXTON RD steel CDS. **£110**
92. SG 404 £1 SEAHORSE DULL BLUE – GREEN. PRISTINE MINT UNMOUNTED. An outstanding example of this classic adhesive. **£3250**
93. SG 407 2.6d grey brown (worn plate). Pristine mint unmounted. With outstanding colour and freshness. **£525**
94. SG 410 5/- pale carmine very worn plate. Superb mint. A lovely MM example showing excellent wear. **£375**
95. 1948 Silver Wedding first day cover. Clean fresh and choice. A lovely illustrated envelope with CDS for 26 April 1948 **£285**
96. SG 063 9d GOVT PARCELS with excellent colour and a double strike of a BEDFORD steel CDS. Very rarely seen. **£325**
97. SG 065 1 1/2d GOVT PARCELS. With a crisp BRIGHOUSE steel CDS. **£40**
98. SG 072 1/- GOVT PARCELS. SUPERB MINT. With light hinge trace. A lovely fresh example and a Brandon certificate accompanies. **£375**
99. SG 078 1/- GOVT PARCELS – SUPERB MINT. A lovely fresh MM example. Bright colours, well centred. Odd light gum crease. A rare official in mint condition. A Brandon certificate accompanies. **£485**
100. 1896 COMPANIES REGISTRATION 5/-. With a crisp CANCELLED oval. Most attractive with fine engraved detail. **£25**

EXTENDED PAYMENTS.

I am very happy to offer extended payments on any items you would like to add to your collection. In this way you can fill those gaps that would otherwise remain empty.