



JOHN LAMONBY

FINE BRITISH & EMPIRE ADHESIVES



211 Old Castle Street, Portchester
Hampshire, PO16 9QW

E-mail: LAMONBY@AOL.COM

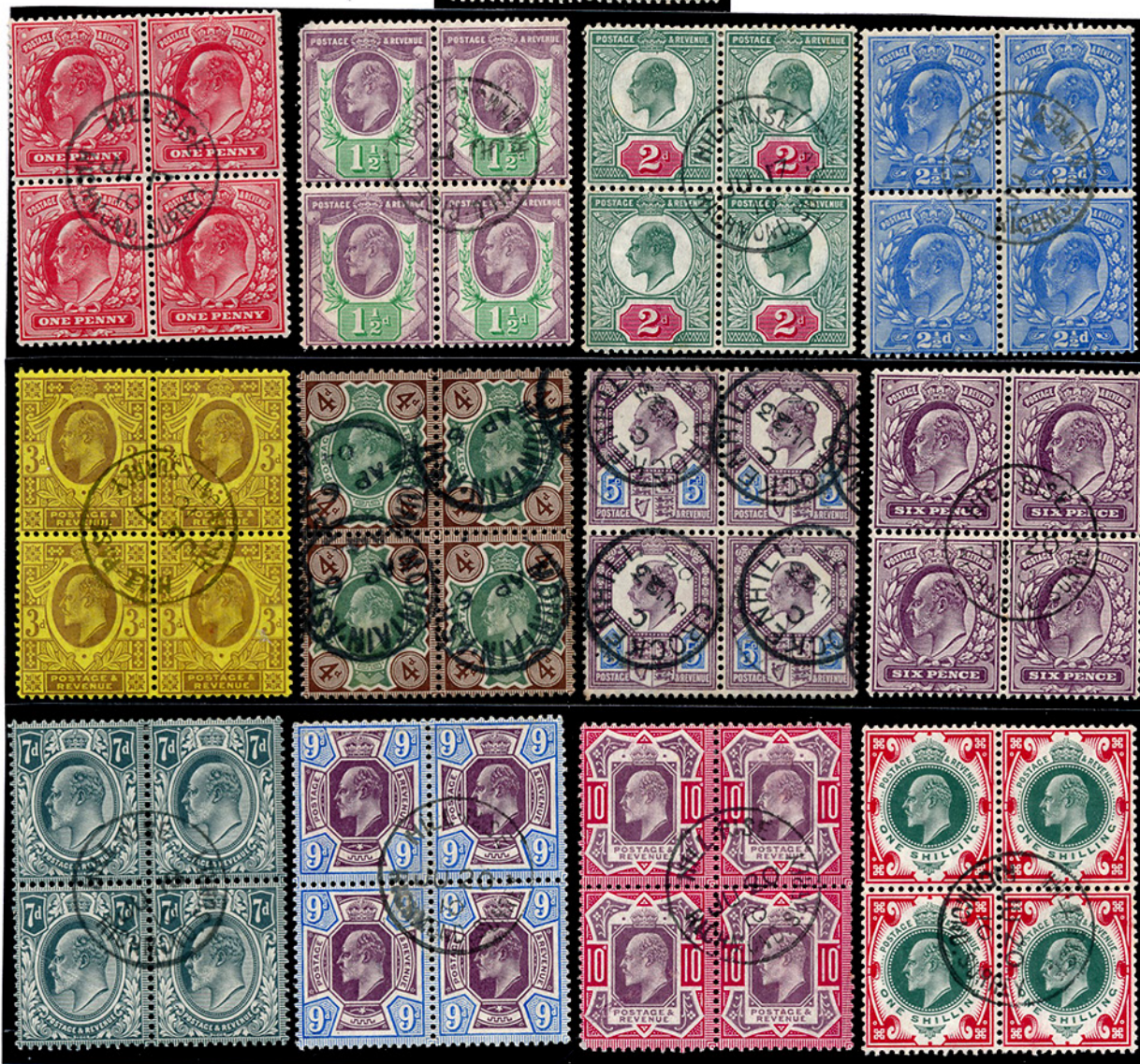
02392 378035 24 HR ANSWERPHONE
02392 201096 FACSIMILE

FINE ADHESIVES.

A small selection to get



the tweezers snapping.





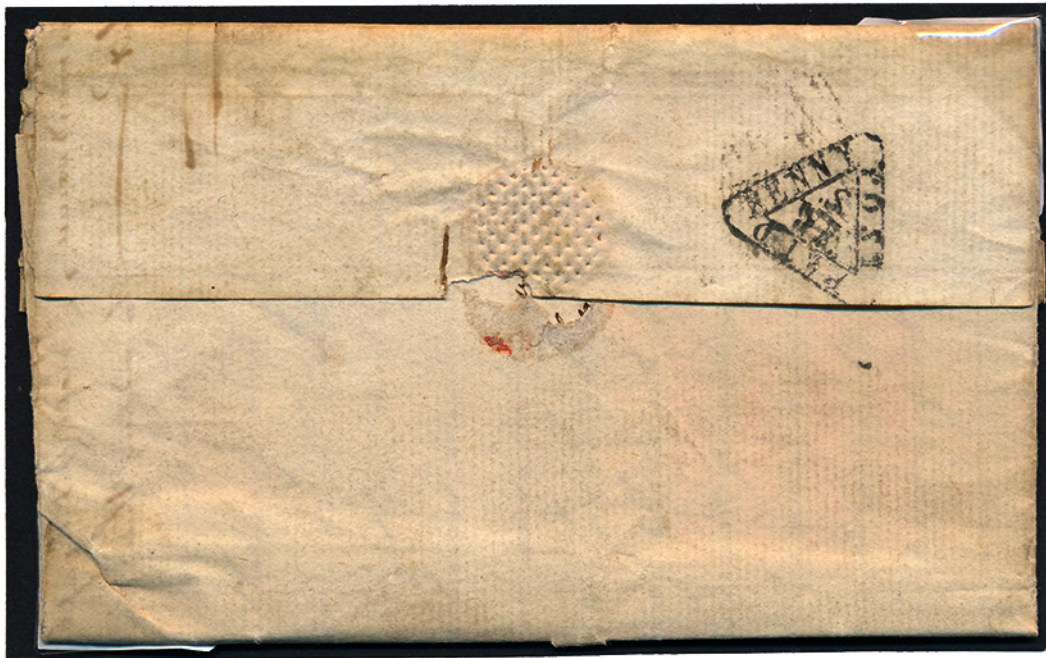
"PASSED THROUGH THE BEDROOM WINDOW OF THE VILLAGE POSTMASTER."

1. 1785 FREE FRANK LONDON TO NEWCASTLE WITH 'FREE' HAND STAMP. Fine letter to London to 'Charles Wren Esqr. Newcastle Tyne' sent free frank and dated 2nd April 85. On front good strike of the circular 'FREE' hand stamp in red, on reverse very fine strike London Bishop mark '2/AP' and a quite wonderful ornate red wax seal. **£65**
2. 1793 MAIL STOCKBRIDGE, HANTS TO LONDON WITH SOUTHWARK OFFICE DOCKWRA TYPE 4a. letter, some soiling, from Stockbridge in Hants to 'Mr John Overton, 4 Mile end Green' dated NOV 24 1793, carried privately to London and then put into the London Penny post and charged '1'. On reverse good strike of the Southwark Office Dockwra type 4a 9 narrow margins0 (PENNY on left) 'S/WE'. An unusually good strike for these. **£125**
3. 1808 MAIL TWICKENHAM TO BISHOPGATE WITH 'TWICKM M.R/3PY P. PAID' RECEIVERS HAND STAMP. Fine letter from Twickenham to 'Mr Du Roveray, No 7 New Street, Bishopsgate' dated march 9th 1838, on from fine strike 'Twickm M.R/3py P.Paid' receivers hand stamp in black. Also on front very fine strike '7o'ClockNight/MR+9 1808/TWO PENNY P.PAID' date stamp in red. Two outstanding strikes. **£65**
4. PLATE 1a. A VERY WORN PLATE. Lettered TI with fine full margins showing exceptional plate wear. A very light Maltese cross in red. **£385**
5. Plate 1a. 1d grey – black. Showing very slight plate wear. A truly GLORIOUS SINGLE lettered AL. with good – HUGE margins and half a crisp orange – red Maltese cross. EXCEPTIONAL. **£450**
6. Plate 1b. 1d red – brown. Lettered FK. Just touched at corner. Otherwise with large – huge margins and a lovely cross. **£80**
7. PLATE TWO CANCELLED IN BLACK. 1d black lettered MB. 4 very choice margins and a part crisp maltese cross. Very fine indeed. **£350**

3.



1



2



3



FORTUNE IN STAMPS WERE IN OLD BOX

TWO men brought to a Strand stamp dealer yesterday an old cardboard box containing some crumpled stamps.

They said the stamps belonged to a titled lady who wished to remain anonymous and who wondered if they were worth anything.

When Mr. J. Webb, the manager, looked through the box he found a block of nine unused 10s. stamps of King Edward VII. overprinted "I.R. Official"—a valuable British issue of great rarity.

Mr. Guy Harmer, the stamp expert, had a photograph of the only 10s. "I.R. Official" stamp which they had ever sold.

"That one alone fetched £950," he said. "These are very badly creased and without gum, but undoubtedly the strip will be worth four figures when it is put up for auction."

1948

8. BLACK PLATE TWO 1d in red – brown. A fine example lettered QG. Lovely margins and a crisp maltese cross. Not easy. £165
9. 1d grey black plate 6 lettered BL. Good – ENORMOUS margins and a vivid orange – red Maltese cross. £375
10. 1d black plate 6. A FABULOUS SINGLE. With generous and outstanding margins. Lettered IE. A crisp light and upright Maltese cross in orange – red. THE BEST. £425
11. 1d grey black plate 7. Lettered II. With margins cut good – large – huge and a crisp corner Maltese cross in black. A fine adhesive. £325
12. 1d black plate 9. A very choice single lettered IH. A clear 'O' flaw with excellent margins and a dazzling red Maltese cross. £425
13. PLATE 9 lettered KG with superbly cut margins and a crisp, complete and upright Maltese cross in black. Very clear 'O' flaw. Very strong horizontal guide lines in letter squares and value and vertical guide lines NE square and 'G' square. All these are clear of postmark. OUTSTANDING. £350
14. BLACK PLATE TEN in red – brown. Lettered LC. A clear 'O' flaw. Perfect margins and a full distinctive Maltese cross. £85
15. 1840 2d blue plate 1. An outstanding example lettered HJ. Wonderful margins and a light Maltese cross in black. Very fine indeed. £425
16. LATE USE OF 1840 2d blue. Plate 2. Lettered GF with fine full margins and a crisp partial London district Duplex. A rarity as such. £525
17. USED CONTRARY TO REGULATIONS. 1840 1d Mulready Lettersheet. Addressed to the stamp office Chester and cancelled with a fine black Maltese cross which regulations state that the postmark should cancel Britannia. A superb MOLD CDS at reverse flap for march 5 1841. Barely visible file crease. In wonderfully fresh condition. £265

5.



4



5



6



7



8



9



10



11



12



13



14



15



16



17

Letter Boxes - and paint

Pillar boxes are repainted at regular intervals. It does not matter whether they are in London or at Lands End or John O'Groats, they are all painted exactly the same shade of red. This is because after many tests Post Office experts have made a special kind of paint for the boxes. One of the tests was to pour water on to the paint for an hour and then to play a powerful beam of light on it. That gave the same results as if the paint had been out in the rain and sunshine for a whole year. The painters are told how to make the paint and from which firms they are to buy the materials. So all the paint is of the same quality and the same colour. It dries hard within twenty minutes of being put on so people are unlikely to spoil their clothes by coming into contact with it. And it is why you will so rarely find a pillar box out of action with the notice against it "WET PAINT".

18. Number 1 in maltese cross. A glorious strike on 1841 1d lettered IC with good – enormous margins. **£140**
19. Number 1 in maltese cross on 1841 1d. A crisp upright strike. With good – huge margins. **£80**
20. Number 4 in maltese cross. A lovely upright strike on 1841 1d lettered DH. With margins cut good – large. **£240**
21. 1841 1d plate 16. Lettered FL with good – huge margins and a lovely Maltese cross, crisp full and upright. **£50**
22. A DESTINCTIVE DUBLIN MALTESE CROSS. 1d red – brown plate 33 lettered HE. With excellent margins on all sides and a lovely clear strike. **£70**
23. SG 13 2d pale blue plate 3. A lovely shade. Lettered RL with superbly cut margins and a light upright maltese cross. **£115**
24. SG 20a 2d blue plate 5. Very well centred. Lettered DD. A featherlight numeral cancel. **£165**
25. SG 23 2d blue plate 4. A lovely fresh single with a crisp numeral cancel. **£110**
26. LATE USE OF THE MALTESE CROSS SG 33 1d plate 44. A stunning strike. Complete and upright. MAGNIFICENT QUALITY. **£525**
27. USED IN MALTA. A complete strike on SG 40 1d plate 34. A pair. **£80**
28. SG 43 1d plate 80. A SUPERB MINT SHEET MARGINAL BLOCK OF 16. With only 4 mounted adhesives. Inscriptional detail and the complete 'POSTAGE' watermark within margin. A lovely fresh block. **£825**
29. SG 43 1d plate 151. A perfectly centred block of 4 with crisp BIRMINGHAM steel CDSs. Lovely and clean **£140**
30. SG 43 1d plate 153. A very choice and complete CARRIGAHOLT steel CDS. Cancelled in heaven. **£60**
31. SG 45 2d plate 12 tied to mourning envelope by a 308 numeral and STIRLING CDS alongside. **£75**

POST OFFICE GUIDE 1936.Packing regulations for certain items. EGGS.

The safe transit of eggs through the post office cannot be guaranteed but the following method of packing is recommended, use a wooden or other ridged box with the suitable partitions and a well fitting lid, wrap each egg separately in newspaper or other soft material, place the eggs on the end, put each one in a separate partition and fill up the vacant spaces in the box with cotton waste mark the parcel 'EGGS'.

7.



18



19



20



21



22



23



24



27



25



26



31



28



29



30



32



CAUTION to POST-BOYS.

BY the Act of 5th of Geo. III. If any Post-Boy, or Rider, having taken any of His Majesty's Mails, or Bags of Letters, under his Care, to convey to the next Post Town or Stage, shall suffer any other Person (except a Guard to ride on the Horse or Carriage, or shall Loiter on the Road, and wilfully mispend his Time, so as to retard the Arrival of the said Mails, or Bags of Letters, at the next Post Town or Stage.—Every such Offender shall, on Conviction before One Justice, be committed to the House of Correction, and confined to hard Labour for one Month. All Post-Boys and Riders are therefore desired to take Notice of this, and are hereby cautioned not to fail in the regular Performance of their Duty, otherwise they will most assuredly be punished as the Law directs. And it is hoped and requested, for the Benefit of public Correspondence, that all Persons, who may observe any Post-Boy or Rider, offending as aforesaid, will give immediate Notice to — *Johnson Williams*
Surveyor of the General Post-Office, (About 1792)

A Cautionary Note. 18th c.

32. SG 47 2d deep blue plate 13. With a crisp light and complete DUNFERMLINE steel CDS. A cracking strike. **£40**
33. SG 47 2d blue plate 14. SUPERB MINT. Fine and very fresh MM. A lovely single. **£185**
34. SG 47 2d deep blue plate 15 superb mint. Lovely rich colour and MM. A fine adhesive. **£225**
35. SG 48 1/2d plate 11. With a crisp upright LONDON steel CDS. **£45**
36. SG 48 1/2d plates 11, 12 and 13. Each tied to piece bearing crisp upright and complete CDSs of Newcastle on Tyne, Bradford and Shepton Mallet. Wonderful trio. **£120**
37. SG 48 1/2d plate 20. A lovely single. The plate number is wonderfully clear. **£45**
38. SG 63, 4d carmine on deeply blued paper. Wmk Medium Garter, a fine used example on 1856 cover to Paris tied by 'NEWBURY / 544' sideways duplex in black (June 25). Reverse with London and Paris (June 27) datestamps. An attractive cover. Very fine and petite. **£525**



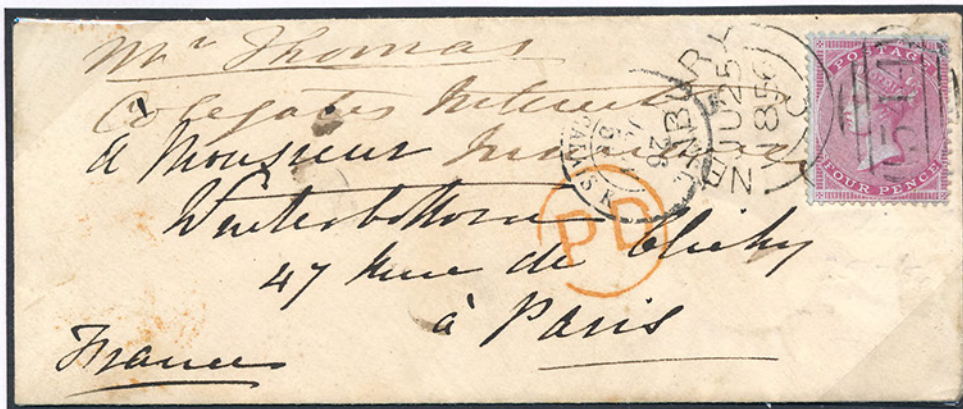
33



36



34



33



35



37



39



40



42



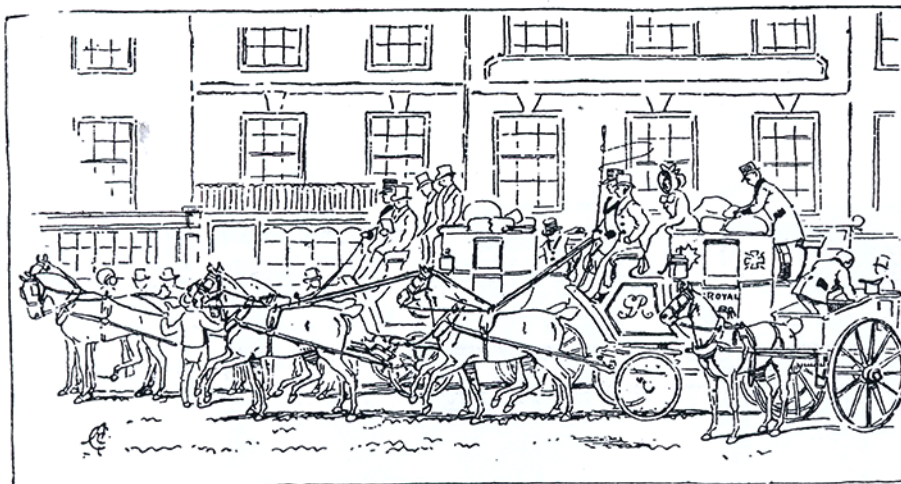
43



45

A JOINT EFFORT

The greatest number of people involved in the design of a single stamp was in 1839-40, when the world's first stamps were being planned. Apart from the 2600 entrants in the Treasury Design Competition the actual stamps were based on an idea Charles and Frederick Heath on a background engine-turned by Jacob Perkins.



A WEST COUNTRY MAIL-COACH AND CART STARTING FROM
PICCADILLY, 1828.

39. SG 80 4d pale red. SUPERB MINT. Unusually well centred. OUTSTANDING COLOUR and FRESHNESS. With full original gum and lightest hinge trace. A stunning adhesive. **£925**
40. SG 95 4d deep vermilion plate 11. SUPERB MINT. With glorious depth of colour. Pristine MM. A lovely single. **£325**
41. SG 103 3d rose pate 7. A quite lovely BLOCK OF 4. Crisp 1092 Telegraphic cancels. **£225**
42. SG 103 3d plate 9. A featherlight ABERDEEN steel CDS **£65**
43. SG 117 1/- plate 4. With a crisp upright LONDON steel CDS **£70**
44. SG 127 5/- plate 1. With pin sharp TORQUAY steel CDSs. Most attractive. **£135**
45. SG 151 1/- ORANGE BROWN WMK SPAY OF ROSE. SUPERB MINT. Choice perfectly centred and MM with outstanding colour and freshness. MOST RARE. **£2250**
46. SG 158 3d rose plate 21. A FABULOUS UNTOUCHED MINT UNMOUNTED ADHESIVE. **£475**
47. SG 159 3d on 3d. A quite lovely example with a crisp complete and upright Glasgow steel CDS. **£120**
48. SG 157 2 1/2d plate 23 with a wonderful EDINBURGH double ringed CDS – full and upright. **£50**
49. SG 162 6d on 6d. With a fine crisp AYR CDS for AUG 3 1883. A lovely bright adhesive. **£85**
50. SG 163 1/- orange – brown plate 14. With a pin sharp GREENOCK steel CDS. A lovely strike **£165**
51. SG 169 5d indigo. Prime MM with Specimen OVPT. **£75**
52. SG 169 5d indigo. With a lovely crisp CREWKERNE steel CDS. **£90**
53. SG 175 2/6d lilac on blued paper. Very well centred with a crisp Liverpool registered CDS for 26 May 1885. A rare adhesive. **£650**
54. SG 181 5/- crimson. With a superb ALLOA steel CDS. Very choice. **£140**
55. SG 189 2d lilac. Quite untouched mint unmounted. Pristine. **£190**
56. SG 189 2d lilac. A MINT UNMOUNTED SHEET MARGINAL BLOCK OF FOUR. Natural gum crease to top but two flawlessly centred and RARE TO SEE IN MULTIPLES. **£475**

11.



46



47



48



49



50



41



56



63



51



44



53



54



52

Longest and Largest

The longest Public Post Office Counter in the United Kingdom is in the Trafalgar Square branch office, London WC2. It is 185 ft (56.4 m) long, with 33 positions and is open 24 hours a day, seven days a week including public holidays. It was opened in 1962. The largest sorting office in the United Kingdom is in Birmingham and occupies an area of 17½ acres and handles 3,500,000 items of mail every day.



55



57



58



59



60



61



64



62



The Postmistress of Watford despatching the Mail. 1820

Hand Gumming Stamps.

In the early days, gum was applied by hand. When this is done it is usually painted on with a brush, very much as you would apply paste to wallpaper. Hand gummed stamps generally show the gum to be unevenly applied and streaky, frequently the brush strokes are visible. In some instances hairs from the brush may still be seen in gum. After a sheet of stamps was gummed by hand it was hung up to dry before going on to the next step in production.

57. SG 191 3d lilac. Pristine mint unmounted and sheet marginal **£190**
58. SG 191 3d lilac. A fabulous Liverpool CDS. A gem of a stamp. **£175**
59. SG 193 5d dull green. A lovely fresh single with a corner steel CDS. **£110**
60. SG 194 6d dull green. Pristine ,mint unmounted. With fabulous depth of colour. **£475**
61. SG 194 6d. Perfectly centred. Excellent colour and a crisp GEORGE STREET steel CDS **£125**
62. SG 195 wi dull green. Superb untouched mint unmounted with variety:- watermark sideways and inverted. AN EXCEPTIONAL ADHESIVE and rarely seen so choice. **£1200**
63. SG 207a 5d. A psit office fresh mint unmounted block of four. **£130**
64. SG 212 £1 green. With lightly placed GRACECHURCH STREET registered ovals. Clean, fine and fresh for **£270**
65. SG 214 1/- VFU indeed a crisp corner CDS. A fine end to the set. **£55**
66. SG 217 – 259 (less SG 215 and SG 240) set in CDS BLOCK OF FOUR. Off very minor faults here and there but a VERY STRIKING ASSEMBLAGE. **£675**
67. SG 256 10d dull purple and scarlet. A pristine mint unmounted corner of sheet single. Mounted in margin only. Superbly fresh. **£185**
68. 10d slate purple and deep (Glossy) carmine. M43 (4). A fine CDS on this RARE EDWARDIAN ADHESIVE. A minor rub but outstanding colours. A Hendon certificate. **£325**
69. SG 257 1/- green and carmine. A glorious BOCK OF TWELVE. With crisp DUMFRIES CDSs. Perf split to one adhesive. The colours are wonderful. A brilliant multiple. **£525**
70. SG 260 2/6d. with a crisp ST LOENARDS GREEN steel CDS. **£95**
71. SG 260 2/6d. With a lightly applied CDS. **£70**
72. SG 262 2/6d. Dull purple. With a crisp BERNERS ST steel CDS. **£90**



70



71



69



72



73



68



67

September 1910
9th DLR Printing.
Plates H1/D(1)
PANE Z
Right sheet / p. H1
Chalky paper
Dull purple & scarlet



65



74



76



75



79



78



77



80



Stamps 14.

Stamps, Lafayette county, Arkansas, U.S.A., was so named in the latter part of 1884 by Mrs. C. T. Crowell, the first postmistress, in honour of her father, James Hardy Stamps, an early settler in the region.

It is now principally a manufacturing town with some farming and considerable oil production. Population: 2,500..

- 73. SG 263 5/- bright carmine. A very fine and upright WIGAN CDS. **£125**
- 74. SG 265 10/- ultramarine. A crisp REGENT STREET steel CDS for AP 22 1910. A lovely example. **£175**
- 75. SG 265 10/- ultramarine. With a crisp and lightly applied Gloucester steel CDS. **£265**
- 76. SG 279 – 286 1/2d – 4d perf 15 X 14. A finely used set of five. With lovely bright colours. **£45**
- 77. SG 285 3d purple on lemon. A very choice sheet marginal mint unmounted block of six. **£375**

The Oldest Post Office

The oldest post office in the United Kingdom, still in its original building is at Sanguhar, Dumfries, Galloway. The post office is unique in having occupied the same house since its incension in 1763, a fact which was officially recognised in a pictorial postmark 1974. The Sanguhar is often, though inaccurately, claimed to be the oldest post office in Britain. The post office, as an abstract term, has existed in many towns and cities since the mid 17th century.

- 78. SG 286 4d deep bright orange M27 (2). Superb unmounted, mounted in attached interpane pillar. **£65**
- 79. SG 297 6d pale dull purple. Pristine MM from the corner of the sheet showing printers date cuts. **£35**
- 80. SG M33 (2) 6d reddish purple (F). A superb mint pair from the centre of the bottom row. Both adhesive are unmounted and show printers date cuts. A Hendon certificate. **£135**
- 81. SG 305 7d slate – grey M38 (2). Untouched unmounted with interpane pillar attached. **£35**
- 82. SG 307a 9d deep plum and blue. M41 (5). A corner CDS on a single from the corner of the pane. Very attractive. **£45**
- 83. SG 311 10d dark plum and carmine. M44 (8). A superb MM single from the sheet corner showing printers date cuts and dot. Wonderfully fresh. **£70**
- 84. SG 314 1/- green and carmine. M47 (5). A fine MM corner of sheet single showing date cuts in marginal surround. **£60**
- 85. SG 316 2/6d dull reddish purple. With a crisp Shaftsbury Avenue steel CDS for Sept 25 1911. **£95**
- 86. SG 317 2/6d dark purple. A light steel CDS. The colour is wonderfully rich. **£110**
- 87. SG 341 1d very deep bright scarlet. N11 (4). With truly fabulous depth of colour. A part CDS. **£45**
- 88. SG 340 wj. 1/2d. A very fine block of 4 with RESERVED WATERMARK. Crisp BUNGAY steel CDSs. **£80**



81



82



83



84



85



88



89



86



87



90



91



92



93



95



97



98



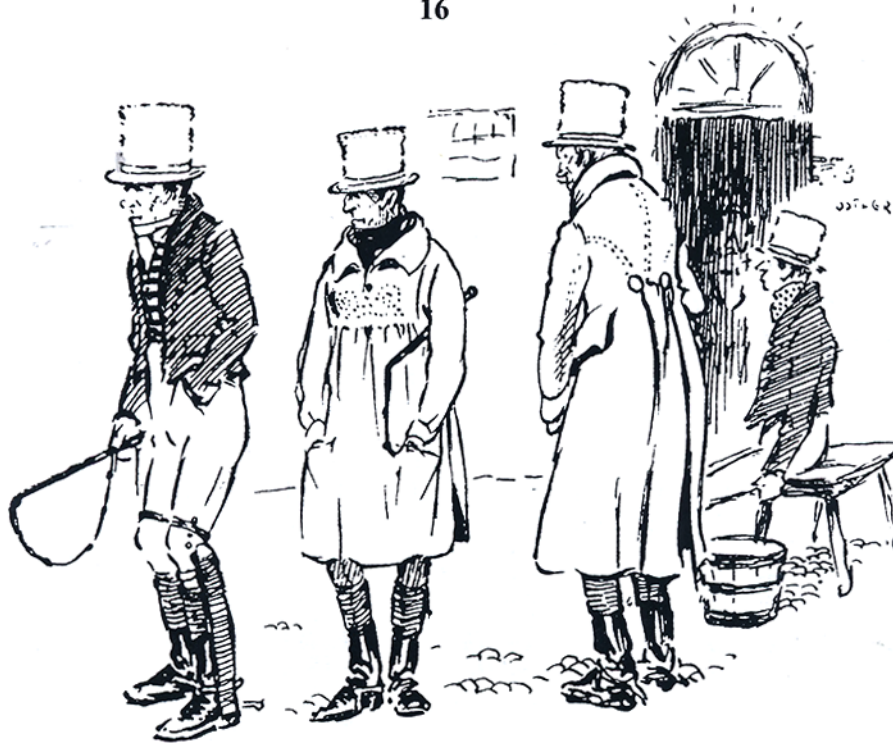
99



100



94



POST-BOYS WAITING FOR THE "NEXT PAIR OUT."

89. N21 (16) 2 1/2d royal blue. Pristine mint unmounted with control 0 20 margin attached. A Royal certificate accompanies. £350
90. SG 401 5/- rose – carmine. A very fine example with a lightly applied Guernsey steel CDS. Lovely quality. £240
91. SG 407 2/6d grey brown (worn plate). Pristine mint unmounted. With outstanding colour and freshness. £525
92. SG 409 5/- bright carmine with a featherlight steel CDS. The colour is strong and vivid. £275
93. SG 416 5/-. A very fine side of sheet marginal block of 4. Each adhesive a crisp GUERNSEY steel CDS. Well centred. Strong perfs with a spotless reverse. A lovely multiple. £240
94. SG 452 10/- INDIGO. A lovely block of four with featherlight London steel CDSs. £240
95. SG 575 3d. A TETE-BECH strip of three with two light steel CDSs. £90
96. SG 01 1/2d IR Official. A pair tied inland revenue printed form, tied by FORFAR CDSs and numeral cancels. Reverse a BRECHIN CDS. Very clean and attractive. £80
97. SG 063 9d GOVT PARCELS with excellent colour and a double strike of a BEDFORD steel CDS. Very rarely seen. £325
98. SG 076 6d GOVT PARCELS. Pristine mint unmounted. A lovely example. £220
99. SG 036 1/2d OW Official with a crisp Bristol steel CDS and a royal certificate. £60
100. SG 0105 2 1/2d ADMIRALTY OFFICIAL. Superb mounted mint. The centring is perfect. £285

Explosive Manchester Pillar Box. 11th March 1858.

I beg to submit a report from the police office in this city by which it will be seen that at 2.30am this day a quantity of gas was found to have escaped from the main pipes into the Hanging Ditch Pillar Box, that the policemen on duty, who detected its presence, imprudently approached the pillar box with its lighted lamp, and caused the gas to explode with great violence, the roof of the pillar having been blown away – a portion of it being thrown a distance of a 100 yards – and the officer himself injured about the head and eyes... It will be necessary to remove the pillar in order to make the requisite repairs, and to permit an examination of the gas pipes which it is believed the pillars base has in some way injured.